

# NORSLO

## FIRST FIX

A brand of

# GREEN BROOK

## Your Complete Range of First Fix Products



**JULY 2023**

**TEL: 01279 772 770**

**E-MAIL: [sales@greenbrook.co.uk](mailto:sales@greenbrook.co.uk)**

Norslo is not just your standard range of commodities - we are proud that on products where specification is rarely compared, that we take the time to consider the quality of our products to make life easier for the contractors.....

### For example...Norslo Switch & Socket Boxes

- 0.9mm thick (thicker than competitors)
- This means the lugs do not bend on second fix
- This avoids badly fitting plates and gaps on the wall
- The increased thickness gives more thread depth
- Meaning stripping the thread is less likely

This all equates to one thing **#happycontractors**



### Our prices...

- Norslo prices are super competitive and our top quality is well known by our customers
- We regularly assess the market to ensure we can offer you the best prices
- Easy to order, either via our sales desk or using our website

[www.greenbrook.co.uk](http://www.greenbrook.co.uk)  
(where you can bag an additional 1% discount)



### Delivery

- Order by 3pm to receive next day delivery
- Direct to site delivery available - just arrange this with our sales team

Follow us on social media for more information







# Switch & Socket Boxes



Part No	Description	Gang	Depths	Pk Qty
<b>116</b>	Switch & Socket Boxes	1 gang	16mm	20
<b>125</b>		1 gang	25mm	10
<b>135</b>		1 gang	35mm	10
<b>147</b>		1 gang	47mm	10
<b>225</b>		2 gang	25mm	5
<b>235</b>		2 gang	35mm	5
<b>247</b>	Shaver Box	2 gang	47mm	5
<b>DB</b>	Dual Box	2 gang	35mm	5
<b>DB25</b>	Dual Box	2 gang	25mm	5
<b>ARCH</b>	Architrave	1 gang	25mm	20
<b>DB3512</b>	Switch & Socket Box Steel Dual	1 gang & 2 gang	35mm K/O ø 20mm	5

Part No	Description	Gang	Depths	Pk Qty
<b>116EB</b>	Extension Boxes	1 gang	16mm	20
<b>125EB</b>		1 gang	25mm	10
<b>135EB</b>		1 gang	35mm	10
<b>216EB</b>		2 gang	16mm	10
<b>225EB</b>		2 gang	25mm	5
<b>235EB</b>		2 gang	35mm	5

# Connection Boxes



Part No	Description	Overall Dimensions	Pk Qty
<b>CHOC30APLS</b>	<b>CHOCBOX</b> Connection Box complete with 4 connection 20A Quick release Connector Block	W47 x L110 x D29mm	50
<b>CHOC30A</b>	Connection Box with cable clamp Come with Free POS display as shown below	H28 x W110 x D49mm (including clamps)	50
<b>CHOC30A-10</b>	Connection Box with cable clamps (bag of 10 in poly bag)		10
<b>CHOC30E</b>	Connection Box Economy (without cable clamps)	H27 x W77 x D49mm	50



# Adaptable Boxes



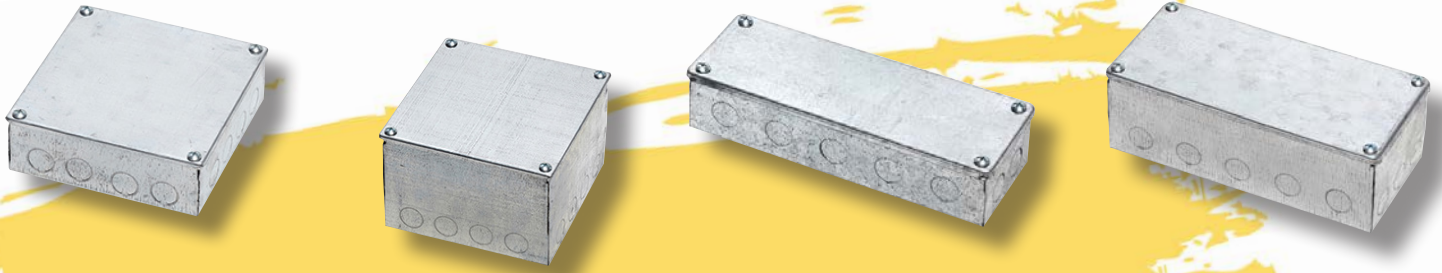
Part No BLACK / GALV	Dimensions	K/O Plain	Pk Qty
3311/2BK 3311/2BP 3311/2GK 3311/2GP	H3 x W3 x D1.5" / H75 x W75 x D38mm	K/O Plain	10
332BK 332GK 332GP	H3 x W3 x D2" / H75 x W75 x D50mm	K/O Plain	10
333GK 333GP	H3 x W3 x D3" / H75 x W75 x D75mm	K/O Plain	5
432GK 432GP	H4 x W3 x D2" / H100 x W75 x D50mm	K/O Plain	5
4411/2BP 4411/2GK 4411/2GP	H4 x W4 x D1.5" / H100 x W100 x D38mm	Plain K/O Plain	5
442BK 442GK 442GP	H4 x W4 x D2" / H100 x W100 x D50mm	K/O Plain	5
443GK 443GP	H4 x W4 x D3" / H100 x W100 x D75mm	K/O Plain	5

## Adaptable Boxes



Part No GALV	Dimensions	K/O Plain	Pk Qty
<b>444GK</b> <b>444GP</b>	H4 x W4 x D4" / H100 x W100 x D100mm	K/O Plain	2
<b>632GK</b> <b>632GP</b>	H6 x W3 x D2" / H150 x W75 x D50mm	K/O Plain	5
<b>633GK</b> <b>633GP</b>	H6 X W3 X D3" / H150 x W75 x D75mm	K/O Plain	5
<b>642GK</b> <b>642GP</b>	H6 X W4 X D2" / H150 X W100 X D50mm	K/O Plain	5
<b>643GK</b> <b>643GP</b>	H6 X W4 X D3" / H150 X W100 X D75mm	K/O Plain	5
<b>644GK</b> <b>644GP</b>	H6 X W4 X D4" / H150 X W100 X D100mm	K/O Plain	2
<b>6611/2GK</b> <b>611/2GP</b>	H6 X W6 X D1.5" / H150 X W150 X D38mm	K/O Plain	5

# Adaptable Boxes



Part No BLACK / GALV	Dimensions	K/O Plain	Pk Qty
662BK 662GK 662GP	H6 x W6 x D2" / H150 x W150 x D50mm	K/O  Plain	6
663GK 663GP	H6 x W6 x D3" / H150 x W150 x D75mm	K/O  Plain	5
664GK 664GP	H6 X W6 X D4" / H150 X W150 X D100mm	K/O  Plain	2
666GK 666GP	H6 X W6 X D6" / H150 X W150 X D150mm	K/O  Plain	2
932GK 932GP	H9 X W3 X D2" / H225 X W75 X D50mm	K/O  Plain	1
942GK 942GP	H9 X W4 X D2" / H225 X W100 X D50mm	K/O  Plain	1
943BP 943GK 943GP	H9 X W4 X D3" / H225 X W100 X D75mm	K/O  Plain	1

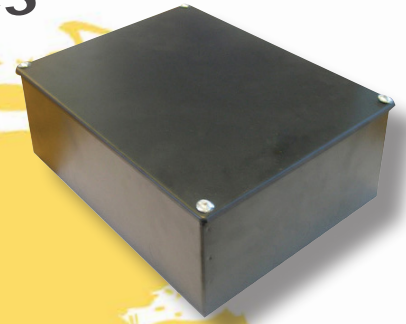
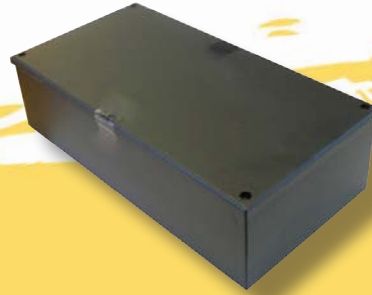
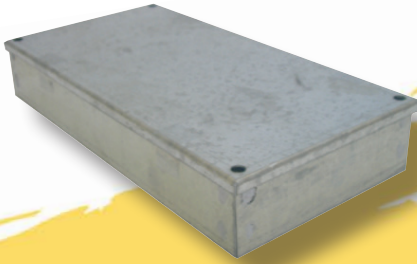


## Adaptable Boxes



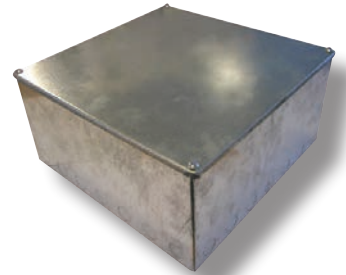
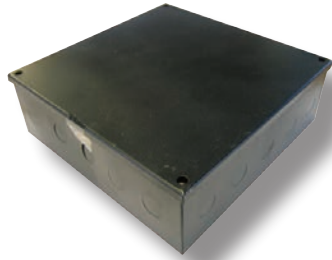
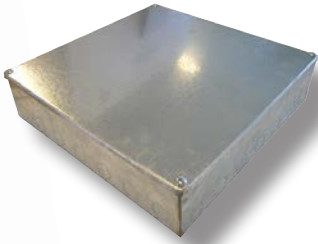
Part No BLACK / GALV	Dimensions	K/O Plain	Pk Qty
<b>962GK</b>	H9 x W6 x D2" / H225 x W150 x D50mm	K/O	5
<b>962GP</b>		Plain	
<b>963GK</b>	H9 x W6 x D3" / H225 x W150 x D75mm	K/O	5
<b>963GP</b>		Plain	
<b>964GK</b>	H9 x W6 x D4" / H225 x W150 x D100mm	K/O	2
<b>964GP</b>		Plain	
<b>992GK</b>	H9 x W9 x D2" / H225 x W225 x D50mm	K/O	2
<b>992GP</b>		Plain	
<b>993BK</b>		K/O	
<b>993GK</b>	H9 x W9 x D3" / H225 x W225 x D75mm	K/O	2
<b>993GP</b>		Plain	
<b>994GK</b>	H9 x W9 x D4" / H225 x W225 x D100mm	K/O	2
<b>994GP</b>		Plain	
<b>996BK</b>		K/O	
<b>996GK</b>	H9 x W9 x D6" / H225 x W225 x D150mm	K/O	1
<b>996GP</b>		Plain	

## Adaptable Boxes



Part No BLACK / GALV	Dimensions	K/O Plain	Pk Qty
1262GK 1262GP	H12 x W6 x D2" / H300 x W150 x D50mm	K/O Plain	1
1263GK 1263BP 1263GP	H12 x W6 x D3" / H300 x W150 x D75mm	K/O Plain Plain	1
1264GK 1264GP	H12 x W6 x D4" / H300 x W150 x D100mm	K/O Plain	1
1293GK 1293GP	H12 x W9 x D3" / H300 x W225 x D75mm	K/O Plain	1
1294GK 1294GP	H12 x W9 x D4" / H300 x W225 x D100mm	K/O Plain	1
1296GK 1296GP	H12 x W9 x D6" / H300 x W225 x D150mm	K/O Plain	1
12122GK 12122GP	H12 x W12 x D2" / H300 x W300 x D50mm	K/O Plain	1

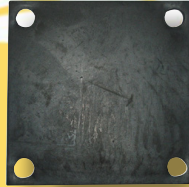
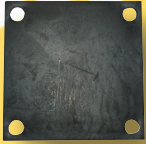
## Adaptable Boxes



Part No BLACK / GALV	Dimensions	K/O Plain	Pk Qty
12123GK	H12 x W12 x D3" / H300 x W300 x D75mm	K/O	1
12123GP		Plain	
12124BK	H12 x W12 x D4" / H300 x W300 x D100mm	K/O	1
12124GK		K/O	
12124GP		Plain	
12126GK	H12 x W12 x D6" / H300 x W300 x D150mm	K/O	1
12126GP		Plain	



## Rubber Gaskets for Boxes



Part No	Description	Dimensions	Pk Qty
<b>33RG</b>	Rubber Gasket	H3 x W3" / H75 x W75mm	10
<b>44RG</b>	Rubber Gasket	H4 x W4" / H100 x W100mm	10
<b>66RG</b>	Rubber Gasket	H6 x W6" / H150 x W150mm	10

## Junction Boxes



Part No	Description	Product Information	Pk Qty
<b>PJ6535K</b>	IP44 Weatherproof rating Circular Plastic Junction Box with knockouts & press on lid	ø 65mm x D35mm	5
<b>PJ8040K</b>	IP44 Weatherproof rating Square Plastic Junction Box with knockouts & press on lid	ø 80mm x D40mm	5
<b>PJ884K</b>	IP44 Weatherproof rating Square Plastic Junction Box with knockouts & press on lid	H80 x W80 x D40mm	5
<b>PJ10105K</b>	IP55 Weatherproof rating Plastic Junction Box with knockouts & screw on lid	H100 x W100 x D50mm	1
<b>PJ1285K</b>		W80 x W120 x D50mm	
<b>PJ15117K</b>		H110 x W150 x D70mm	
<b>PJ19147K</b>		H140 x W190 x D70mm	
<b>PJ10105P</b>	IP54 Weatherproof rating Plastic Junction Box with smooth walls & screw on lid	H100 x W100 x D50mm	1
<b>PJ1285P</b>		H80 x W120 x D50mm	
<b>PJ15117P</b>		H110 x W150 x D70mm	
<b>PJ19147P</b>		H140 x W190 x D70mm	
<b>PJ24199P</b>		H190 x W240 x D90mm	
<b>PJ302212P</b>		H220 x W300 x D120mm	
<b>PJ383012P</b>		H380 x W300 x D120mm	
<b>PJ463812P</b>	H380 x W460 x D120mm		

# Grommets & Grommet Strip PVC



Part No	Description	Dimensions	Pk Qty
GBP16	Blanking Plug	ø 16mm	100
GBP20		ø 20mm	100
GBP25		ø 25mm	100
GBP32		ø 32mm	50
GBP38		ø 38mm	25
GBP50		ø 50mm	25
GO16	Open Grommet	ø 16mm	100
GO20		ø 20mm	100
GO25		ø 25mm	100
GO32		ø 32mm	50
GO38		ø 38mm	25
GO50		ø 50mm	20
GSBT20	Semi-Blind Grommet (top diaphragm)	ø 20mm	100
GSBT25		ø 25mm	100
GSBT32		ø 32mm	50
GSBT38		ø 38mm	25
GSBT50		ø 50mm	20
SGB20	Super (Quick-fit) Blanking Plug	ø 20mm	100
SGB25		ø 25mm	100
SGB32		ø 32mm	50
SGO20	Super (Quick-fit) Open Grommet	ø 20mm	100
SGO25		ø 25mm	100
SGO32		ø 32mm	50
GS1	Grommet Strip Black PVC	<b>Panel Thickness</b> 1mm - 2mm	50M Reel
GS2		1.5mm - 2.8mm	50M Reel
GS3		2.7mm - 3.8mm	50M Reel
GS4		3.7mm - 5.2mm	25M Reel
GS5		5.3mm - 6.8mm	25M Reel
B20	Conduit Bushes	ø 20mm	100
B25		ø 25mm	



## Dry Lining Boxes



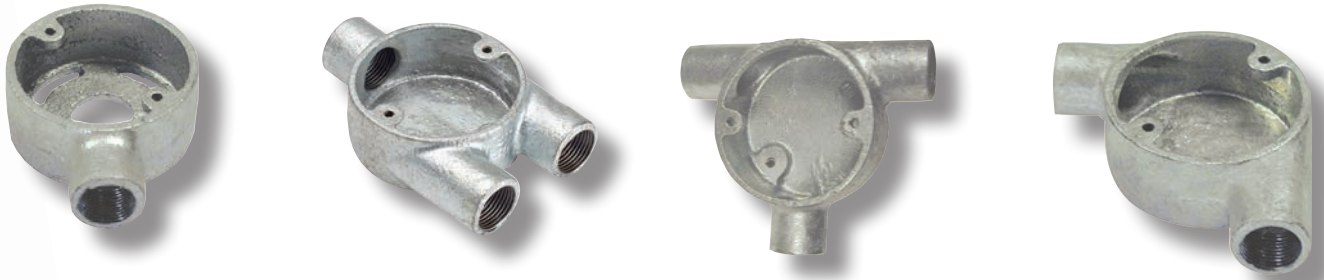
Part No	Description	Max Wall/ Plasterboard Thickness	K/O Dim	K/O Qty
DL1N	1 Gang - 35mm Deep Cable Entry Dim - 2 x 16 x 26mm	16mm	1 x 25mmø	10
DL2N	2 Gang - 35mm Deep Cable Entry Dim - 2 x 16 x 26mm	16mm	1 x 25mmø	10
DL147N	1 Gang - 47mm Deep Cable Entry Dim - 2 x 16 x 26mm	30mm	1 x 25mmø	20
DL247N	2 Gang - 47mm Deep Cable Entry Dim - 2 x 16 x 26mm	30mm	1 x 25mmø	10
DLCN	1 Gang Circular 32mm Deep, 58.4mm Inner dimensions, 78.6mm Outer Dimensions	20mm	2 x 20mmø	10
DLDN	Dual Box - 35mm Deep Cable Entry Dim - 6 x 6 x 26mm	20mm	2 x 25mmø	10

## Malleable Conduit Boxes



Part No BLACK / GALV	Description	Thread ø	Pk Qty
20B1 25B1 20G1N 25G1N	Terminal Box	ø 20mm ø 25mm ø 20mm ø 25mm	10
20B2 25B2 20G2N 25G2N	Through Box	ø 20mm ø 25mm ø 20mm ø 25mm	10
20B3 25B3 20G3N 25G3N	Tee Box	ø 20mm ø 25mm ø 20mm ø 25mm	10
20B4 20G4N 25G4N	Intersection Box	ø 20mm ø 20mm ø 25mm	10
20B5 25B5 20G5N 25G5N	Angle Box	ø 20mm ø 25mm ø 20mm ø 25mm	10
20G6N	H Box	ø 20mm	10
20BU 20GUN 25GUN	U Box	ø 20mm ø 20mm ø 25mm	10

## Malleable Conduit Boxes



Part No BLACK / GALV	Description	Thread $\varnothing$	Pk Qty
20BY 25BY 20GYN 25GYN	Y Box	$\varnothing$ 20mm $\varnothing$ 25mm $\varnothing$ 20mm $\varnothing$ 25mm	10
B20B1E B20G1E	Terminal tension Box	$\varnothing$ 20mm	10
B20G2E	Through Extension Box	$\varnothing$ 20mm	10
B20G3E	Tee Extension Box	$\varnothing$ 20mm	10
B20G5E	Angle Extension Box	$\varnothing$ 20mm	10
B20BT3 B20GT3	Tee Tangent Box	$\varnothing$ 20mm	10
B20GT5	Angle Tangent Box	$\varnothing$ 20mm	10

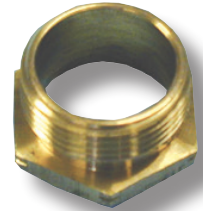
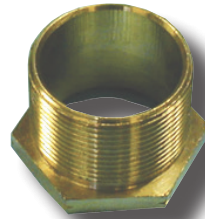


# Malleable Conduit Boxes



Part No BLACK / GALV	Description	Thread $\varnothing$	Pk Qty
<b>B20GBO</b>	Back Outlet Box	$\varnothing$ 20mm	10
<b>B20G3BO</b>	Tee Back Outlet Box	$\varnothing$ 20mm	10
<b>B20B1BO</b> <b>B20G1BO</b>	Terminal Back Outlet Box	$\varnothing$ 20mm	10
<b>B20G2BO</b>	Through Back Outlet Box	$\varnothing$ 20mm	10
<b>1GLB</b> <b>2GLB</b> <b>3GLB</b> <b>4GLB</b>	<b>Loop-In Box</b> 1 hole 2 hole 3 hole 4 hole	$\varnothing$ 20mm	10 10 10 20

## Bushes



Part No BRASS	Description	Dimensions	Pk Qty
<b>16FBB</b>	Female Brass Bushes	ø 16mm	100
<b>20FBB</b>		ø 20mm	100
<b>25FBB</b>		ø 25mm	100
<b>32FBB</b>		ø 32mm	100
<b>4FBB</b>		ø 1.5"	100
<b>5FBB</b>		ø 2"	25
<b>20MBBL</b>	Male Long Brass Bushes	ø 20mm	100
<b>25MBBL</b>		ø 25mm	100
<b>32MBBL</b>		ø 32mm	50
<b>4MBBL</b>		ø 1.5"	20
<b>5MBBL</b>		ø 2"	10
<b>16MBBS</b>	Male Short Brass Bushes	ø 16mm	100
<b>20MBBS</b>		ø 20mm	100
<b>25MBBS</b>		ø 25mm	100
<b>32MBBS</b>		ø 32mm	50
<b>4MBBS</b>		ø 1.5"	50
<b>5MBBS</b>		ø 2"	25

# Saddles



Part No BLACK / GALV	Description	Dimensions For conduit of	Pk Qty
<b>20GPS</b> <b>25GPS</b>	Plain Saddles (Pressed Steel)	ø 20mm ø 25mm	100
<b>20BSBS</b> <b>25BSBS</b> <b>20GSBS</b> <b>25GSBS</b> <b>32GSBS</b>	Spacer Bar Saddles (Pressed Steel)	ø 20mm ø 25mm ø 20mm ø 25mm ø 32mm	100 100 100 100 50
<b>20BDS</b> <b>25BDS</b> <b>32BDS</b> <b>20GDS</b> <b>25GDS</b> <b>32GDS</b>	Distance Saddles (Malleable)	ø 20mm ø 25mm ø 32mm ø 20mm ø 25mm ø 32mm	50 50 25 50 25 25
<b>20BHS</b> <b>20GHS</b> <b>25GHS</b>	Hospital Saddles (Malleable)	ø 20mm ø 20mm ø 25mm	25 25 20
<b>20WSBS</b>  <b>25WSBS</b>	Spacer Bar Saddles Pressed Steel	ø 20mm  ø 25mm	100



# Covers, Hooks, Plates & Chain

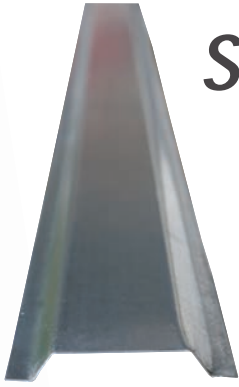


Part No BLACK / GALV	Description	Dimensions Thread	Pk Qty
20BMH 20GMH	Male Hooks	ø 20mm	25
20BBS 20GBS	Ball & Socket	ø 20mm	20
BLPC GLPC	Recessed Covers Light Gauge	Suitable for ø 20mm & ø 25mm	100
BLPCF GLPCF	Flat Covers Light Gauge	Suitable for ø 20mm & ø 25mm	100
20BDC 20GDC 25GDPCM	Dome Covers	ø 20mm ø 20mm ø 25mm	50 50 20
BHP GHP	Hook Plates Load rating: 25kg	Suitable for ø 20mm & ø 25mm	25
CRG	Cover Gasket Circular Rubber	Suitable for ø 20mm & ø 25mm	100
BJC	Jack Chain 10M Hank Max working load 7.5kg	No 10	1 x 10M Hank
GJC			
8GJC	Jack chain 10M Hank Max working load 15kg	No 8	
SBJC	Jack chain 10M Hank Max working load	No 10	
SGJC	40kg		

# Couplers



Part No BLACK /GALV	Description	Dimensions Thread	Pk Qty
20GEC	Earth Coupler	ø 20mm	100
20BFC	Flanged Couplers (Malleable)	ø 20mm	50
20GFC		ø 20mm	30
25GFC		ø 25mm	20
20GFCS	Flanged Couplers (Steel)	ø 20mm	25
25GFCS		ø 25mm	
20BC	Plain Couplers	ø 20mm	100
25BC		ø 25mm	50
32BC		ø 32mm	40
4BC		ø 1.5"	30
5BC		ø 2"	10
20GC		ø 20mm	100
25GC		ø 25mm	50
32GC		ø 32mm	40
4GC		ø 1.5"	30
5GC		ø 2"	10



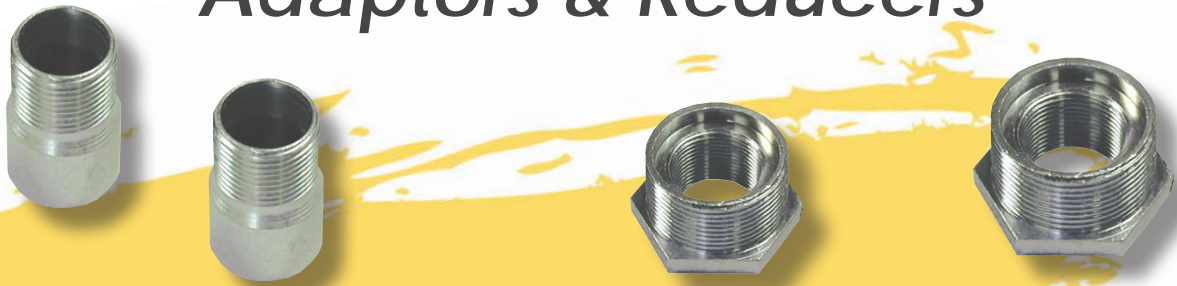
## Steel Channel & Lockrings



Part No	Description	Dimensions	Pk Qty
<b>GC12</b>	Galvanised Steel Channel in 2M lengths Gauge 0.40mm	W12mm	50
<b>GC25</b>		W25mm	50
<b>GC37</b>		W37mm	50
<b>GC50</b>		W48mm	25
<b>GC63</b>		W63mm	25

Part No BZP / SC	Description	Dimensions Thread	Pk Qty
<b>20PME</b>	Milled Edge Lockrings	ø 20mm	100
<b>25PME</b>		ø 25mm	100
<b>32PME</b>		ø 32mm	100
<b>4PME</b>		ø 1.5"	50
<b>5PME</b>		ø 2"	50
<b>20SCME</b>		ø 20mm	100
<b>25SCME</b>		ø 25mm	100
<b>32SCME</b>		ø 32mm	100
<b>4SCME</b>		ø 1.5"	50
<b>5SCME</b>		ø 2"	50

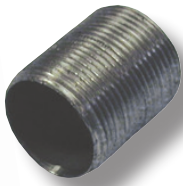
# Adaptors & Reducers



Part No BLACK / GALV	Description	Thread ø	Pk Qty
20MGA	Adaptor 20mm Male x 3/4" Female	ø 20mm	100
34MGA	Adaptor 3/4" Male x 20mm Female	ø 20mm	25
2016BR	Reducers	ø 20 - 16mm	100
2520BR		ø 25 - 20mm	50
2016GR		ø 20 - 16mm	100
2520GR		ø 25 - 20mm	50
3220GR		ø 32 - 20mm	25
3225GR		ø 32 - 25mm	25
420GR		ø 1.5" - 20mm	20
425GR		ø 1.5" - 25mm	20
432GR		ø 1.5" - 32mm	20
525GR		ø 2" - 25mm	10
532GR		ø 2" - 32mm	10
54GR		ø 2" - 1.5"	10



# Nipples



Part No BZP / SC	Description	Dimensions Thread	Pk Qty
20PN	Nipples	ø 20mm	100
25PN		ø 25mm	100
20SCN		ø 20mm	100
25SCN		ø 25mm	100
32SCN		ø 32mm	50
20BN	Bonding Nipples <i>(Die Cast Zinc Alloy)</i>	ø 20mm	100
20SCW	Serrated washer	ø 20mm	250
25SCW	Bright Zinc Plated	ø 25mm	
M1025PW M1030PW M620PW M625PW M820PW M825PW	Steel Penny Washers  Bright Zinc Plated	M10 x 25mm M10 x 30mm M6 x 20mm M6 x 25mm M8 x 20mm M8 x 25mm	100

## Extension Rings & Plugs



Part No BLACK / GALV	Description	Thread $\varnothing$ DEPTH	Pk Qty
16BER	Extension Rings	16mm	50
20BER		20mm	20
25BER		25mm	20
10GER		10mm	50
13GER		13mm	50
16GER		16mm	50
20GER		20mm	20
25GER		25mm	20
32GER		32mm	20
40GER		40mm	10
50GER		50mm	10

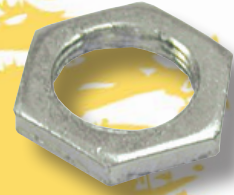
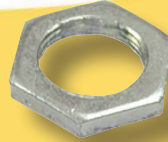
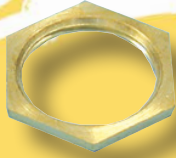
Part No	Description	Dimensions Thread	Pk Qty
BRASS	Slotted Plugs Brass	$\varnothing$ 20mm	100
20BRSP			
25BRSP		$\varnothing$ 25mm	
GALV	Hexagonal Plugs	$\varnothing$ 20mm	50
20GHP			
25GHP		$\varnothing$ 25mm	

## Elbows, Bends & Tees



Part No BLACK / GALV	Description	Thread $\varnothing$	Pk Qty
25BSB		$\varnothing$ 20mm	
20GSB	Solid Bend	$\varnothing$ 25mm	1
25GSB		$\varnothing$ 25mm	
20BIB		$\varnothing$ 20mm	
25BIB	Inspection Bends	$\varnothing$ 25mm	1
20GIB		$\varnothing$ 20mm	
25GIB		$\varnothing$ 25mm	
20BSE		$\varnothing$ 20mm	20
20GSE	Solid Elbow	$\varnothing$ 20mm	20
25GSE		$\varnothing$ 25mm	10
20BIE		$\varnothing$ 20mm	20
25BIE	Inspection Elbows	$\varnothing$ 25mm	20
20GIE		$\varnothing$ 20mm	20
25GIE		$\varnothing$ 25mm	10
20GST	Solid Tees	$\varnothing$ 20mm	20
20BIT		$\varnothing$ 20mm	20
20GIT	Inspection Tees	$\varnothing$ 20mm	20
25GIT		$\varnothing$ 25mm	10

## Locknut - hex



Part No	Description	Thread $\varnothing$	Pk Qty
20BRLN	Brass Locknuts	$\varnothing$ 20mm	100
25BRLN		$\varnothing$ 25mm	100
32BRLN		$\varnothing$ 32mm	50
20GHN	Steel Heavy Gauge Locknuts	$\varnothing$ 20mm	100
25GHN		$\varnothing$ 25mm	
16BLN	Steel Light Gauge Locknuts	$\varnothing$ 16mm	100
20BLN		$\varnothing$ 20mm	100
25BLN		$\varnothing$ 25mm	100
32BLN		$\varnothing$ 32mm	100
5BLN		$\varnothing$ 2"	100
16GLN		$\varnothing$ 16mm	100
20GLN		$\varnothing$ 20mm	100
25GLN		$\varnothing$ 25mm	100
32GLN		$\varnothing$ 32mm	50
40GLN		$\varnothing$ 40mm	50
50GLN		$\varnothing$ 50mm	50
4GLN		$\varnothing$ 1.5"	50
5GLN		$\varnothing$ 2"	50



## Cable Gland Kits



Part No	Description	Thread ø	Contents
20SBWK	BW type Cable Gland Kit	ø 20mm (small)	2 x glands
20BWK		ø 20mm	2 x shrouds
25BWK		ø 25mm	2 x tags
32BWK		ø 32mm	2 x locknuts
40BWK	Two Part Glands (indoors)	ø 40mm	1 x gland
50BWK		ø 50mm	1 x shroud
63BWK		ø 63mm	1 x tag
75BWK		ø 75mm	1 x locknut
20SCWK	CW type Cable Gland Kit	ø 20mm (small)	2 x glands
20CWK		ø 20mm	2 x shrouds
25CWK		ø 25mm	2 x tags
32CWK		ø 32mm	2 x locknuts
40CWK	Three Part Glands (outdoors)	ø 40mm	1 x gland
50CWK		ø 50mm	1 x shroud
63CWK		ø 63mm	1 x tag 1 x locknut

## Cable Gland Kits



Part No	Description	Thread $\varnothing$	Contents
20SBWKLSF	BW type Cable Gland Kit Low smoke and fume Two Part Glands (indoors)	$\varnothing$ 20mm (small)	2 x glands
20BWKLSF		$\varnothing$ 20mm	2 x shrouds
25BWKLSF		$\varnothing$ 25mm	2 x tags
32BWKLSF		$\varnothing$ 32mm	2 x locknuts
40BWKLSF		$\varnothing$ 40mm	1 x gland
50BWKLSF		$\varnothing$ 50mm	1 x shroud
63BWKLSF		$\varnothing$ 63mm	1 x tag
75BWKLSF		$\varnothing$ 75mm	1 x locknut
20SCWKLSF	CW type Cable Gland Kit Low smoke and fume Three Part Glands (outdoors)	$\varnothing$ 20mm (small)	2 x glands
20CWKLSF		$\varnothing$ 20mm	2 x shrouds
25CWKLSF		$\varnothing$ 25mm	2 x tags
32CWKLSF		$\varnothing$ 32mm	2 x locknuts
40CWKLSF		$\varnothing$ 40mm	1 x gland
50CWKLSF		$\varnothing$ 50mm	1 x shroud
63CWKLSF		$\varnothing$ 63mm	1 x tag
75CWKLSF		$\varnothing$ 75mm	1 x locknut

## Cable Glands & Crampets



Part No	Description	Dimensions	Pk Qty
<b>BRASS</b>		<b>Thread</b>	
<b>16TRS</b>	Glands	ø 16mm	100
<b>20TRS</b>	Brass TRS	ø 20mm	100
<b>25TRS</b>	stuffing	ø 25mm	50

Part No BLACK / GALV	Description	Dimensions Conduit Size	Pk Qty
<b>20BFCR</b>	Flat Crampets	ø 20mm	100
<b>20GFCR</b>		ø 20mm	
<b>25BFCR</b>		ø 25mm	
<b>25GFCR</b>		ø 25mm	

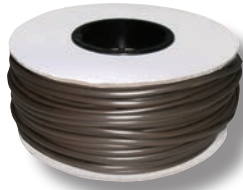
# PVC Sleeving Hanks



Part No	Description	Dimensions
BLS3 BLS4 BLS5 BLS6 BLS8 BLS10 BLS12 BLS16	PVC Sleeving 100M Hank Blue	ø 3mm ø 4mm ø 5mm ø 6mm ø 8mm ø 10mm ø 12mm ø 16mm
BNS3 BNS4 BNS5 BNS6 BNS8 BNS10 BNS16	PVC Sleeving 100M Hank Brown	ø 3mm ø 4mm ø 5mm ø 6mm ø 8mm ø 10mm ø 16mm
WS3 WS4 WS6	PVC Sleeving 100M Hank White	ø 3mm ø 4mm ø 6mm
BS2 BS3 BS4 BS5 BS6 BS8 BS10 BS12	PVC Sleeving 100M Hank Black	ø 2mm ø 3mm ø 4mm ø 5mm ø 6mm ø 8mm ø 10mm ø 12mm
ES1 ES2 ES3 ES4 ES5 ES6 ES8 ES10 ES12 ES16	PVC Sleeving 100M Hank Green/Yellow	ø 1mm - 1.5mm ø 2mm ø 3mm ø 4mm ø 5mm ø 6mm ø 8mm ø 10mm ø 12mm ø 16mm
GRS3 GRS4 GRS6 GRS10	PVC Sleeving 100M Hank Grey	ø 3mm ø 4mm ø 6mm ø 10mm

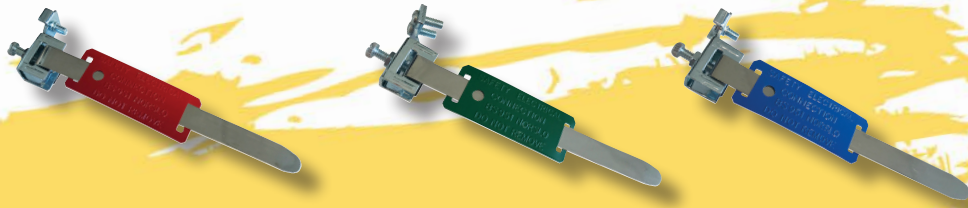


## PVC Sleeving Reels



Part No	Description	Dimensions
<b>BLS3-R</b>	PVC Sleeving 100M Reel	ø 3mm
<b>BLS4-R</b>	Blue	ø 4mm
<b>BNS3-R</b>	PVC Sleeving 100M Reel	ø 3mm
<b>BNS4-R</b>	Brown	ø 4mm
<b>ES2-R</b>	PVC Sleeving	ø 2mm
<b>ES3-R</b>	100M Reel	ø 3mm
<b>ES4-R</b>	Green / Yellow	ø 4mm
<b>GRS3-R</b>	PVC Sleeving 100M Reel	ø 3mm
<b>GRS4-R</b>	Grey	ø 4mm
<b>TC3-R</b>	PVC Sleeving 100M Reel Blue 20M, Grn / Yellow 60M, Brown 20M	ø 3mm

## Earth Clamps & Clips



Part No	Description	Pipe Dia (∅)	Pk Qty
EC14GB	Earth Clamps for dry conditions		20
EC14/2GB	Terminal size A-D 2.5 - 10mm <sup>2</sup>		
EC14/3GB	Max earth conductor 1 x 10mm <sup>2</sup>		
EC15GB	Earth Clamps for dry conditions	12mm - 32mm	20
EC15/2GB	Terminal size A-D 2.5 - 10mm <sup>2</sup>	32mm - 50mm	
EC15/3GB	Max earth conductor 1 x 10mm <sup>2</sup>	50mm - 75mm	
EC16GB	Earth Clamps for dry conditions		20
EC16/2GB	Terminal size A-D 2.5 - 10mm <sup>2</sup>		
EC16/3GB	Max earth conductor 1 x 10mm <sup>2</sup>		

The Norslo high performance earth clamp is designed to meet the requirements of BS 951.

Available in three colours :- red for non-corrosive dry atmosphere and blue or green for corrosive or humid conditions. Available in three standard band lengths.

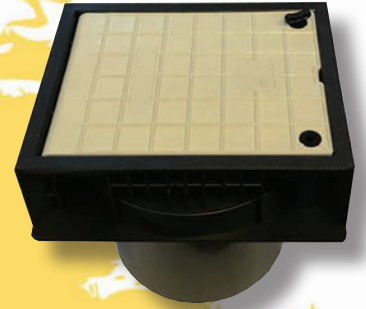
The Norslo Radiator Clamp Kit was specifically designed to allow a convenient and easy method of complying with the IET wiring regulations.

# Earth Rods, Clamps & Accessories



Part No	Description	Product Information	Pk Qty
<b>Economy Range</b>			
NR384E	Economy Earth Rod	3/8" x 4' non extend	1
NR584E	Copper plated to 25 microns	5/8" x 4' extendable	
NRC38E	Lug to Rod Clamp - Brass	3/8" economy	
NC38E	Cable to Rod Clamp - Brass	3/8"	
NC58E	Cable to Rod Clamp - Brass	5/8"	
RC58E	Used to join two 5/8" extendable earth rods together - Brass	5/8" rod coupling (economy)	
<b>Premium Range</b>			
NR384	Premium Earth Rod	3/8" x 4' non extend	1
NR584	Copper bonded to 250 microns	5/8" 4' extendable	
NRC38	Lug to clamp - Alloy	3/8"	
NC38	Cable to Rod Clamp - Alloy	3/8"	
NC58	Cable to Rod Clamp - Alloy	5/8"	
RC58	Used to join 5/8" extendable earth rods together - Alloy	5/8" rod coupling	
DS58	Driving Bolt - Steel (Suitable for the 584 Earth Rods)	5/8" driving bolt	

# Earth Rod Inspection Pits



Part No	Description	Terminal Hole Size	Pk Qty
ECB	Earthing Box PVC	ø 66mm, H60mm	1
PT205	Earth Inspection Pit Working Load 5,000kg Made from lightweight polymer	H300 x W300 x D212mm	1
EPIT	Lightweight Earth Inspection Pit Working Load 5,000kg Made from High performance polymer	H214 x W216mm	1



## PVC Insulating Tape & Heatshrink Sleeving



Part No	Description	Colour	Pk Qty
IT1933B10	Electrical Tape 33M length	Black	10 x 33M rolls
IT1933BL10		Blue	
IP1933BN10		Brown	
IT1933GY10		Green/Yellow	
IT1933G10		Grey	
IT1933R10		Red	
IT1933W10		White	
IT1933Y10		Yellow	
IT1933RP7	Rainbow Pack	7 colours	7 x 33M rolls

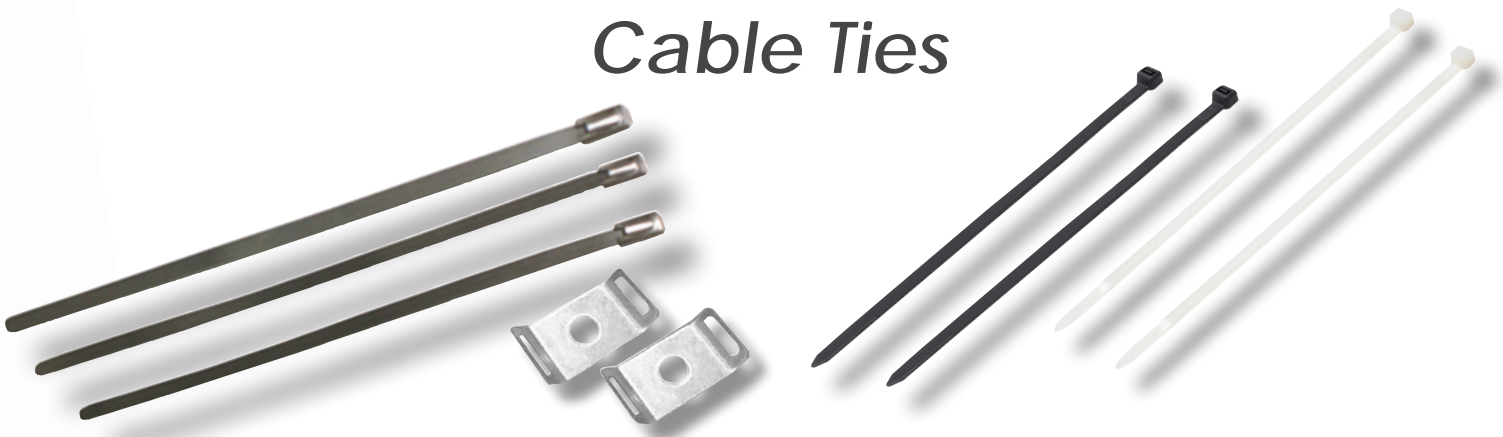
Part No	Description	Colour	Pk Qty
HSSMCP364	6.4mm, 3 x 250mm lengths	5 Colours	1
HSSMCP395	9.5mm, 3 x 250mm lengths		
HSSMCP3127	12.7mm, 3 x 250mm lengths		
HSSMCP2191	19.1mm, 2 x 250mm lengths		
HSSMCP2254	25.4mm, 2 x 250mm lengths		

# Catenary Wire



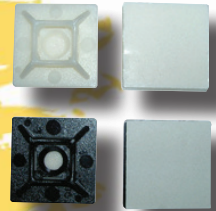
Part No	Description	Product Information	Pk Qty
<b>CWK30</b>	Catenary Wire Kit Includes - 3mm x 30M wire 4 x CWG, 2 x CWE, 1 x CWT, 1 x WRP and 1 x WHP	-	1
<b>CW30</b> <b>CW50</b> <b>CW100</b>	Catenary Wire 3mm 500Kg breaking strain	30M 50M 100M	1
<b>CWN</b>	Nylon Cable Suspender		1
<b>CWT</b>	4" Strainer / Tensioner		1
<b>WRP</b>	Ring Plate		1
<b>WHP</b>	Hook Plate		1
<b>CWE</b>	Eye		25
<b>CWG</b>	Grip		1
<b>GA3</b>	Gripple 2 - 3mm		10
<b>WP</b>	Wall Plate		1

# Cable Ties



Part No	Description	Dimensions	Pk Qty
200/46SS 300/46SS 360/46SS	Stainless Steel Cable Ties Grade:AISI.304 Roller ball locking	L200 x W4.6mm L300 x W4.6mm L360 x W4.6mm	100
SSBM4	Stainless Steel Base	L28.3 x W15.1 x H5.1mm	100
SSBM6	Stainless Steel grade AISI.304	L28.3 x W15.1 x H5.1mm	
075/22B 098/25B 140/36B 160/45B 200/28B 200/48B 240/78B 290/48B 300/07B 360/48B 370/78B 530/09B	Nylon Cable Ties	L80 x W2.5mm L100 x W2.5mm L140 x W3.5mm L180 x W4.8mm L200 x W2.5mm L200 x W4.5mm L250 x W7.0mm L280 x W4.8mm L300 x W7.0mm L350 x W4.8mm L370 x W7.0mm L530 x W9.0mm	100
075/22C 098/25C 140/36C 160/45C 200/28C 200/48C 240/78C 290/48C 300/07C 360/48C 370/78C	Nylon Cable Ties	L80 x W2.5mm L100 x W2.5mm L140 x W3.5mm L180 x W4.8mm L200 x W2.5mm L200 x W4.5mm L250 x W7.0mm L280 x W4.8mm L300 x W7.0mm L350 x W4.8mm L370 x W7.0mm	100

# Cable Ties & Accessories



Part No RED	Description	Dimensions	Pk Qty
<b>140/36R</b>	Red Cable Ties Nylon	L140 x W3.5mm	100
<b>200/28R</b>		L200 x W2.5mm	
<b>200/48R</b>		L200 x W4.5mm	
<b>290/48R</b>		L280 x W4.8mm	
<b>370/78R</b>		L370 x W7.0mm	

Part No	Description	Cable Dimensions	Actual Dimensions	Pk Qty
<b>19/19</b>	Self Adhesive Base - Clear	ø 3.6mm	H19 x W19mm	100
<b>19/19B</b>	Self Adhesive Base - Black			
<b>27/27</b>	Self Adhesive Base - Clear	ø 4.8mm	H27 x W27mm	
<b>27/27B</b>	Self Adhesive Base - Black			

## Perforated Bands



Part No	Description	Dimensions	Pk Qty
PFBB12N	Perforated Fixing Bands Black Powder Coated	L10M x W12mm x 10.8mm hole size, 5mm	1
PFBB17N		L10M x W17mm x 10.8mm hole size, 7mm	
PFBG12N	Perforated Fixing Bands Galvanised	L10M x W12mm x 10.8mm hole size, 5mm	
PFBG17N		L10M x W17mm x 10.8mm hole size, 7mm	



# Screws



Part No	Description	Finish	Pk Qty	Dimensions
4X6 4X8 4X10 4X12 4X16 4X20 4X25 4X35 4X40 4X50	Panhead Screws Brass 4mm	Brass	1000 1000 1000 1000 1000 1000 1000 1000 1000 100	6mm 8mm 10mm 12mm 16mm 20mm 25mm 35mm 40mm 50mm
3/4X8PCT 1X8PCT 1X10PCT 1 1/4X8PCT 1 1/4X10PCT 1 1/2X8PCT 1 1/2X10PCT 2X8PCT	Pozi-Drive Woodscrews BZP	Bright Zinc Plated	200	3/4" x 8 1" x 8 1" x 10 1 1/4" x 8 1 1/4" x 10 1 1/2" x 8 1 1/2" x 10 2" x 8
SD100	Cavity Wall Fixings Complete with screws self drilling 35mm screw length	Zinc	-	100
3.5X35B 3.5X50B 3.5X16NP 3.5X25NP 3.5X35NP 3.5X50NP 3.5X60NP 3.5X75NP	Switch & Socket Screws Raised countersunk 3.5mm	Brass Brass Nickel Plated Nickel Plated Nickel Plated Nickel Plated Nickel Plated Nickel Plated	35mm 50mm 16mm 25mm 35mm 50mm 60mm 75mm	100

## Cable Clips (Twin & Earth), Roofing Nuts & Expansion Plugs



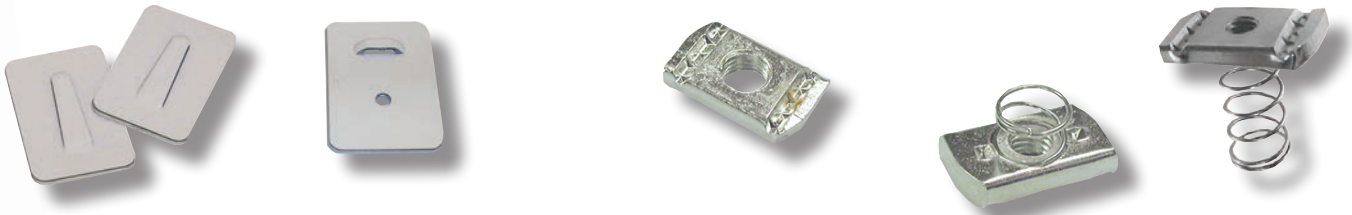
Part No	Description	Dimensions	Pk Qty
<b>CCF1.5G</b>	Flat 1 - 1.5mm Grey	H 7.3mm	1000
<b>CCF2.5G</b>	Flat 2.5mm Grey	H 8.2mm	
<b>CCF4G</b>	Flat 4mm Grey	H 8.5mm	
<b>CCF10G</b>	Flat 10 - 16mm Grey	H 11.5mm	
<b>CCFD1.5G</b>	Flat Double 1 - 1.5mm Grey	H 9.3mm	
<b>CCFD2.5G</b>	Flat Double 2.5mm Grey	H 8.4mm	
<b>RB12</b> <b>RB20</b> <b>RB25</b> <b>RB35</b> <b>RB50</b>	Roofing Nuts & Bolts BZP M6	Bright Zinc Plated	200 200 200 200 100
<b>51AP2</b>	Screw size = 6 - 10 Drill size = 5.5/6mm	Red	1000
<b>51AP3</b>	Screw size = 8 - 12 Drill size = 7mm	Brown	

## Cable Clips (Round)



Part No	Description	Dimensions	Pk Qty
<b>CCR3B</b>	Round 3 - 5mm Black	H 3 - 5mm	1000
<b>CCR3W</b>	Round 3 - 5mm White	H 3 - 5mm	
<b>CCR5B</b>	Round 5 - 7mm Black	H 5 - 7mm	
<b>CCR5W</b>	Round 5 - 7mm White		
<b>CCR7B</b>	Round 7 - 10mm Black	H 7 - 10mm	
<b>CCR7W</b>	Round 7 - 10mm White		
<b>CCR10B</b>	Round 10 - 14mm Black	H 10 - 14mm	
<b>CCR10W</b>	Round 10 - 14mm White		
<b>CCR14B</b>	Round 14 - 20mm Black	H 14 - 20mm	500
<b>CCR14W</b>	Round 14 - 20mm White		500

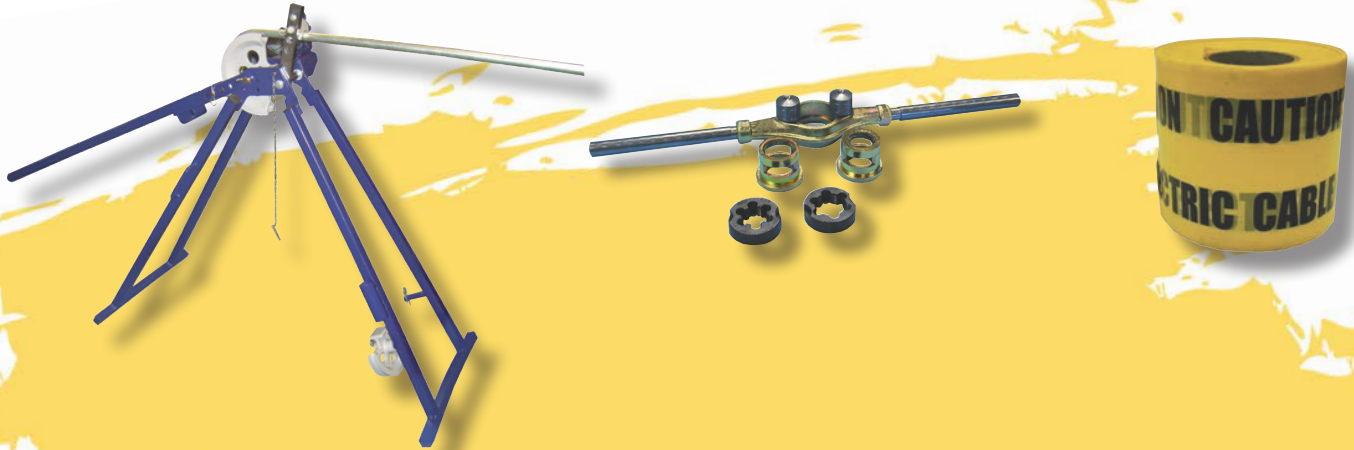
# Self Adhesive Fixing Clips & Zebedees



Part No	Description	Cable Dimensions	Actual Dimensions	Pk Qty
<b>SAF0</b> <b>SAF1</b> <b>SAF2</b> <b>SAF3</b> <b>SAF4</b>	Fixing Clip with self adhesive base	ø 3mm ø 4mm ø 8mm ø 12mm ø 16mm	H20 x W14mm H29 x W19mm H36 x W24mm H45 x W32mm H54 x W38mm	100
<b>SAFTC</b>	Cable Tie Carrier 10mm	ø 10mm	H38 x W25mm	

Part No	Description	Dimensions	Pk Qty
<b>ZM6N</b> <b>ZM8N</b> <b>ZM10N</b> <b>ZM12N</b>	Spring Nuts / Channel Nuts 'Zebedees' No Springs	ø 6mm ø 8mm ø 10mm ø 12mm	
<b>ZM6S</b> <b>ZM8S</b> <b>ZM10S</b> <b>ZM12S</b>	Spring Nuts / Channel Nuts 'Zebedees' Short Springs	ø 6mm ø 8mm ø 10mm ø 12mm	100
<b>ZM6L</b> <b>ZM8L</b> <b>ZM10L</b> <b>ZM12L</b>	Spring Nuts / Channel Nuts 'Zebedees' Long Springs	ø 6mm ø 8mm ø 10mm ø 12mm	

# Conduit & Cable Tool Accessories



Part No	Description
<b>GCPBN</b>	Conduit Pipe Bender Bends steel pipe 20 - 25mm Dia.
<b>BSET</b>	B Type Set 20 & 25mm Die, Guide & Stock
<b>DSET32</b>	D Type Set 32mm
<b>20D</b>	Die B Type 20mm
<b>25D</b>	Die B Type 25mm

Part No	Description	Colour	Pk Qty
<b>EWT</b>	Electrical Warning Tape 365m length	Yellow	1 x 365m reel



## Brass Full Nuts & Washers



Part No	Description	Finish	Dimensions	Pk Qty
<b>2BAW</b>	Washers	Brass	2BA	500
<b>4W</b>	Brass		4mm	
<b>2BAN 3.5N 4N</b>	Full Nuts Brass	Brass	2BA 3.5mm 4mm	500

## Brass Earthing Blocks



Part No	Description	Terminal Hole Size	Pk Qty
<b>4WEB</b>	Brass Earthing Block with plating finish Double pole 4 way	1 x 25mm 3 x 16mm	20
<b>8WEB</b>	Brass Earthing Block with plating finish Double Pole 8 way	2 x 25mm 6 x 16mm	20
<b>4WEBS</b>	Brass Earthing Block with plating finish Single Pole 4 way	1 x 25mm 3 x 16mm	25
<b>8WEBS</b>	Brass Earthing Block with plating finish Single Pole 8 way	2 x 25mm 6 x 16mm	25

# Connector Blocks



Part No	Description	Product Information	Pk Qty
CB1	100A 25mm <sup>2</sup>	Single pole, 5 way 132g, H64 x W47 x D38mm	20
CB3	100A 35mm <sup>2</sup>	Single pole, 5 way 188g, H64 x W47 x D38mm	20
CB2	100A 25mm <sup>2</sup>	Double pole, 2 x 5 way 290g, H89 x W65 x D55mm	10
CB6	100A 35mm <sup>2</sup>	Double pole 2 x 5 way 493g, H104 x W66 x D67mm	10
CB9	200A 70mm <sup>2</sup>	Single pole, 6 way 585g, H125 x W64 x D55mm	1
CB35S	100A 25mm <sup>2</sup>	Single pole, 1 x 5 way 132g H64.5 x W47 x D37mm	20
CB35D	100A 35mm <sup>2</sup>	Double pole, 2 x 5 way 188g H103.7 x W68.6 x D68mm	10

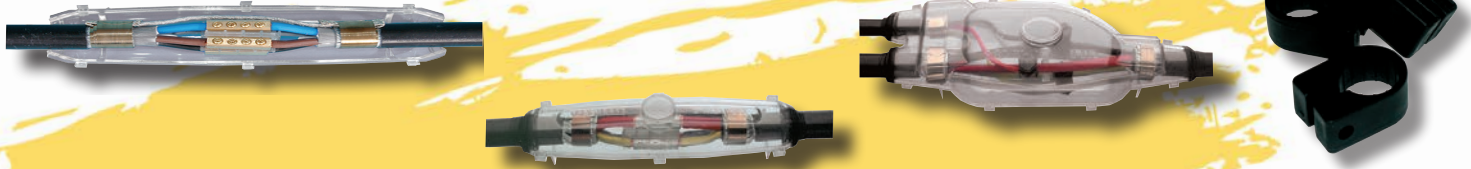
	Weight (g)	H (mm)	W (mm)	D (mm)
CB1	132	64	47	38
CB2	290	89	65	55
CB3	188	64	47	38
CB6	493	104	66	67
CB9	585	125	64	55

# JUNCTION BOXES



Part No	Description	Product Information	Pk Qty
GB2299	Mini Junction Box 20A	2 x 1.5mm <sup>2</sup> 49g ø58mm	10
GB2620 GB2620B	Standard Junction Box 5A	2 x 1.5mm <sup>2</sup> 49g ø60mm	10
GB2621	Standard Junction Box 20A	3 x 1.5mm <sup>2</sup> 78g ø75mm	10
GB2622	Standard Junction Box 30A	3 x 2.5mm <sup>2</sup> 85g ø75mm	10
GB2618 GB2618B	HD Junction Box 20A	4 x 1.5mm <sup>2</sup> 145g ø90mm	10
GB2298 GB2298B	HD Junction Box 20A	4 x 1.5mm <sup>2</sup> 170g ø90mm	10

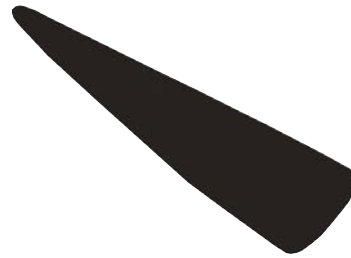
# Cable Jointing Kits. Cable Clamps & Cleats



Part No	Description	Product Information
CJS1	LV Straight Joints	1.5 - 6mm <sup>2</sup>
CJS2		10 - 16mm <sup>2</sup>
CJS3		25mm <sup>2</sup>
CJS4		35 - 95mm <sup>2</sup>
CJS5		120mm <sup>2</sup>
CJB1	LV Branch Joints	1.5 - 6mm <sup>2</sup>
CJB2		10 - 16mm <sup>2</sup>

Part No	Description	Thread ø	Pk Qty
NP3	Cable Cleats	ø 7.6mm	w100
NP4		ø 10.2mm	100
NP5		ø 12.7mm	100
NP6		ø 15.2mm	100
NP7		ø 17.8mm	100
NP8		ø 20.3mm	100
NP9		ø 22.8mm	100
NP10		ø 25.4mm	100
NP11		ø 27.7mm	50
NP12		ø 30.4mm	50
NP14		ø 35.6mm	50
NP16		ø 40.6mm	50
NP18		ø 45.7mm	20
NP20		ø 50.8mm	50

## Brass Earth Tags



Part No	Description	Terminal Hole Size	Pk Qty
20ET	Earth Tags - Brass	ø 20mm	100
25ET		ø 25mm	100
20BS	PVC Black Tapered Shroud 20mm	-	10



## Surface Boxes PVC



Part No	Description	Mini Trunking K/O Dimensions & Qty	∅ 20mm Conduit K/O Qty	Pk Qty
<b>RC1</b>	1 Gang, 32mm deep Round corners	H25 x W15mm Qty 1	1	20
<b>RC1E</b>	Economy off White			
<b>RC2</b>	2 Gang, 32mm deep Round corners	H25 x W15mm Qty 3	3	10
<b>RC2E</b>	Economy off White			
<b>SC1</b>	1 Gang, 32mm deep Square corners	H25 x W15mm Qty 1	1	20
<b>SC1E</b>	Economy off White			
<b>SC2</b>	2 Gang, 32mm deep Square corners	H25 x W15mm Qty 3	3	10
<b>SC2E</b>	Economy off White			

## Channel PVC & Conduit PVC



Part No	Description	Dimensions	Pk Qty
CH05	High Impact PVC Channel	ø 13mm x L2M	100M
CH10		ø 26mm x L2M	
CH15		ø 39mm x L2M	
Part No WHITE / BLACK	Description	Dimensions	Pk Qty
HC20W	Heavy gauge Circular PVC Conduit Tube	ø 20mm x L3M	90M
HC25W		ø 25mm x L3M	
HC20B		ø 20mm x L3M	
HC25B		ø 25mm x L3M	
LC20	Light gauge Circular PVC Conduit Tube	ø 20mm x L3M	90M
LC25		ø 25mm x L3M	90M
OC05	Oval PVC Conduit Tube	ø 13mm x L3M	150M
OC06		ø 16mm x L3M	
OC07		ø 20mm x L3M	
OC10		ø 26mm x L3M	

# Conduit Fittings & Accessories



Part No WHITE / BLACK	Description	Dimensions	Pk Qty
P1WAY20W P1WAY25W P1WAY20B P1WAY25B	Terminal Box	ø 20mm ø 25mm ø 20mm ø 25mm	20
P2WAY20W P2WAY25W P2WAY20B P2WAY25B	Through Box	ø 20mm ø 25mm ø 20mm ø 25mm	
PANGLE20W PANGLE25W PANGLE20B PANGLE25B	Angle Box	ø 20mm ø 25mm ø 20mm ø 25mm	
P3WAY20W P3WAY25W P3WAY20B P3WAY25B	Tee Box	ø 20mm ø 25mm ø 20mm ø 25mm	
P4WAY20W P4WAY25W P4WAY20B P4WAY25B	4 Way Box	ø 20mm ø 25mm ø 20mm ø 25mm	

## Conduit Fittings & Accessories



Part No WHITE / BLACK	Description	Dimensions	Pk Qty
PLOOPW PLOOPB	Loop-in Box	ø 20mm	20
PCCW PCCB	Circular Covers	ø 65mm	100
PSTB20W PSTB25W PSTB20B PSTB25B	Slip Bends	ø 20mm ø 25mm ø 20mm ø 25mm	20 10 25 20
PIB20W PIB25W PIB20B PIB25B	Inspection Bends	ø 20mm ø 25mm ø 20mm	20
PIE20W PIE20B	Inspection Elbows	ø 20mm	20
PIT20W PIT25W PIT20B PIT25B	Inspection Tees	ø 20mm ø 25mm ø 20mm ø 25mm	20
PMB20W PMB25W PMB20B	Male Bushes	ø 20mm ø 25mm ø 20mm	100
PSB20W PSB20B PSB25B	Spacer Bar Saddles	ø 20mm ø 20mm ø 25mm	100 100 50

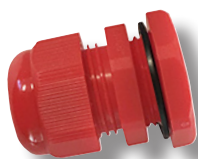
# Conduit Fittings & Accessories



Part No WHITE / BLACK	Description	Dimensions	Pk Qty
PRCC20W PRCC25W PRCC20B PRCC25B	Round Conduit Clips	ø 20mm ø 25mm ø 20mm ø 25mm	200 50 200 100
POCC16W POCC20W POCC25W	Oval Conduit Clips	ø 16mm ø 20mm ø 25mm	100
PC20W PC25W PC20B PC25B	Straight Couplers	ø 20mm ø 25mm ø 20mm ø 25mm	100 50 100 50
PEC20W PEC20B	Expansion Couplers	ø 20mm ø 20mm	50 50
PMA20W PMA25W PMA20B PMA25B	Male Adaptors	ø 20mm ø 25mm ø 20mm ø 25mm	100 50 100 100
PFA20W PFA25W PFA20B PFA25B	Female Adaptors	ø 20mm ø 25mm ø 20mm ø 25mm	100 50 100 50
PR2520W PR2520B	Reducer	ø 25 x 20	100
PLN20W PLN20B PLN25B	Hexagonal Locknuts	ø 20 ø 25	100
PLR20W PLR25W	Lockrings	ø 20 ø 25	200 200

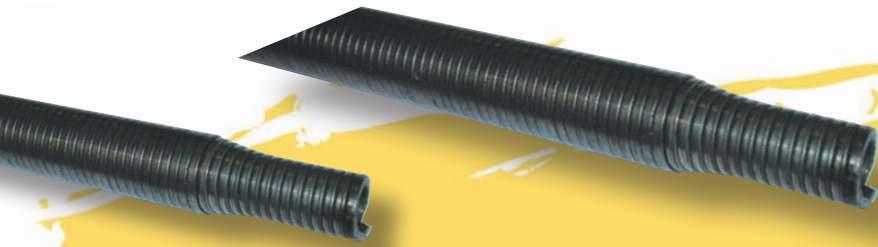


## PVC Cable Glands



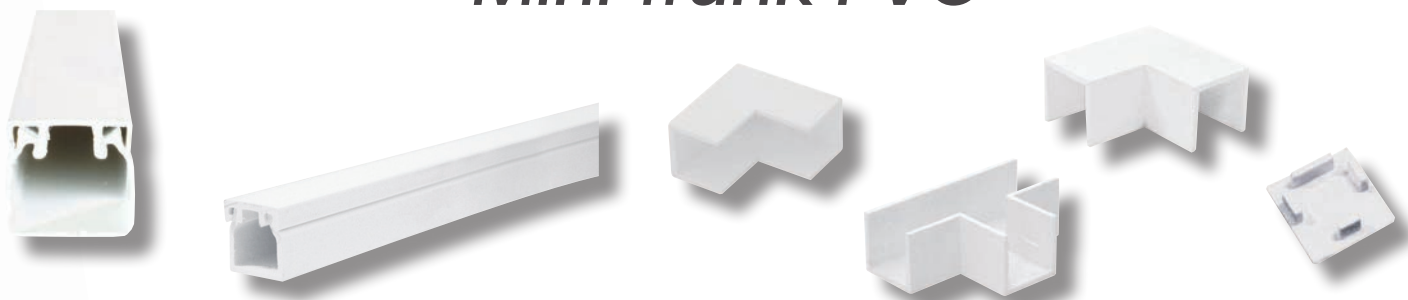
Part No	Description	Colour	Pk Qty
DTG20BS	IP68	Black	10
DTG20GS	20mm (small)	Grey	
DTG20RS	Cable Range	Red	
DTG20WS	3 - 7mm	White	
DTG20BL	IP68	Black	10
DTG20GL	20mm (long)	Grey	
DTG20RL	Cable Range	Red	
DTG20WL	10 - 14mm	White	
DTG25B	IP68	Black	10
DTG25G	25mm	Grey	
DTG25R	Cable Range	Red	
DTG25W	13 - 18mm	White	
DTG32B	IP68	Black	10
DTG32G	32mm	Grey	
DTG32W	Cable Range 18 - 25mm	White	

# Bending Springs & PVC Adhesive



Part No	Description	Product Information	Pk Qty
20BSH	Heavy gauge Bending Springs (Green)	ø 20mm	1
25BSH		ø 25mm	
32BSH		ø 32mm	
38BSH		ø 38mm	
20BSL	Light gauge Bending Springs (Red)	ø 20mm	1
25BSL		ø 25mm	

## Mini Trunk PVC



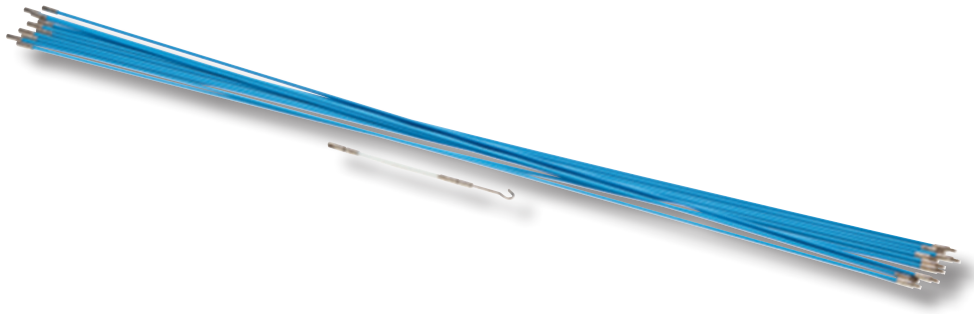
Part No	Description	Dimensions	Pk Qty
NMT1	Mini Trunking High impact PVC	H16mm x W16mm	75M
NMT2		H16mm x W25mm	75M
NMT3		H16mm x W40mm	30M
NMT4		H25mm x W40mm	30M
NMT5		H25mm x W50mm	30M
SAMT1	Mini Trunking High impact PVC	<b>Trunking dimensions</b> H16mm x W16mm	75M
SAMT2	Self adhesive	H16mm x W25mm	
EA1	External Angle	H16mm x D16mm	10
EA2		H16mm x D25mm	
FA1	Flat Angle	H16mm x D16mm	10
FA2		H16mm x D25mm	
IA1	Internal Angle	H16mm x D16mm	10
IA2		H16mm x D25mm	
FT1	Flat Tee	H16mm x D16mm	10
FT2		H16mm x D25mm	
C1	Coupling	H16mm x D16mm	10
C2		H16mm x D25mm	
SE1	Stop End	H16mm x D16mm	10
SE2		H16mm x D25mm	

## Conduit Kit PVC



Part No	Description	Product Information	Pk Qty
20CK 25CK	PVC Flexible Conduit Contractor Pack	Pack contains - 10M of flexible conduit x 10 nylon swivel fittings x 10 nylon locknuts	10M conduit
20CKG 25CKG	Spare glands for contractor pack	ø 20mm ø 25mm	10

## Draw Rods



Part No	Description	Pk Qty	
DR10	10M Draw Rod Kit Contains - 10 x 4mm x 1M GRP rods 1 Mini Eye, 1 x Mini Hook, 1 x Flexi Lead (130mm x 4mm)	1	



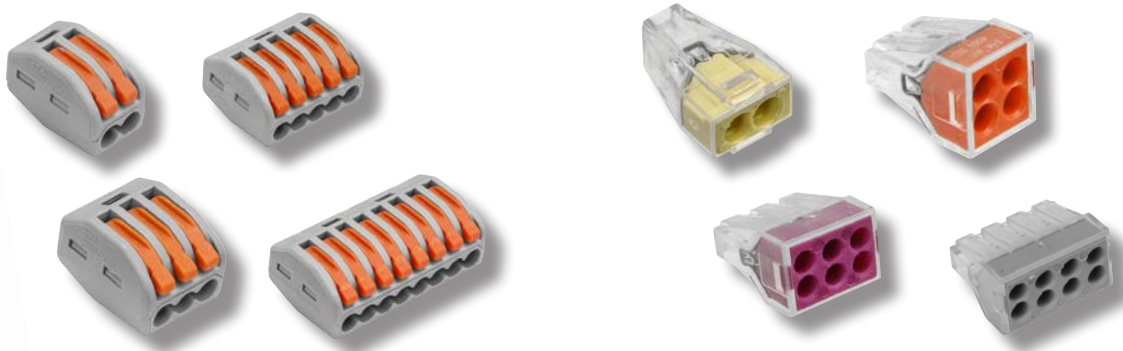
# Draw-in Tapes & Connector Strips



Part No	Description	Length	Pk Qty
10NDT	Draw-in Tapes, Nylon, 3mm	10M	1
20NDT		20M	
30NDT		30M	

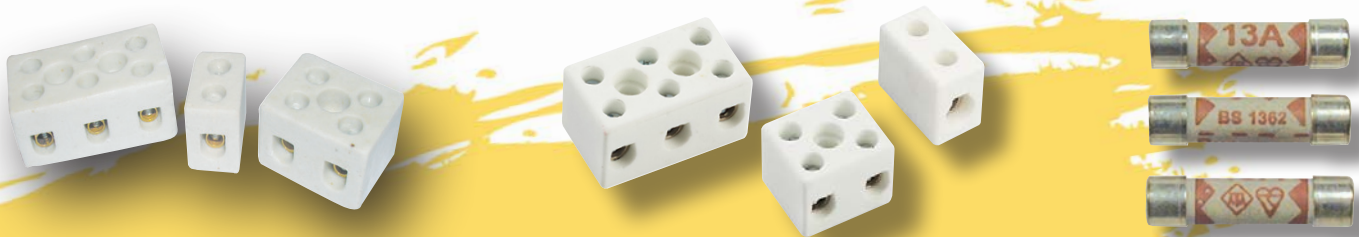
Part No	Description	Amps	Pk Qty
2SC	Polyethylene 12 way Strip Connectors Clear	3A	10
5SC		5A	
10SC		10A	
15SC		15A	
30SC		30A	
60SC		60A	
NYC5 NYC15 NYC30	Nylon 12 way Strip Connectors Black	5A 15A 30A	

## Lever & Push Fit Connectors



Part No	Description	Current	Pk Qty
<b>LC2P</b>	2 Pole Lever Connector 230V	32A	100
<b>LC3P</b>	3 Pole Lever Connector 230V		
<b>LC5P</b>	5 Pole Lever Connector 230V		50
<b>LC8P</b>	8 Pole Lever Connector 230V		
<b>PFC2</b>	2 Push-Fit Connector 250V	24A	100
<b>PFC4</b>	4 Push-Fit Connector 250V		
<b>PFC6</b>	6 Push-Fit Connector 250V		
<b>PFC8</b>	8 Push-Fit Connector 250V		

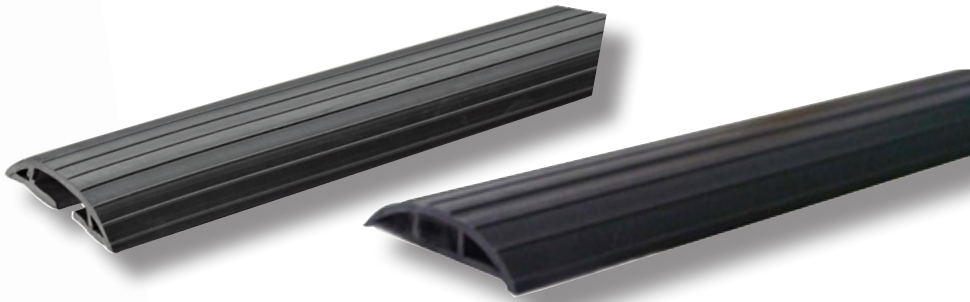
# Connector - Porcelain & Fuses



Part No	Description	Poles	Fix Holes mm	Dimensions	Pk Qty
PC51	5A Porcelain Connectors	1	0	H15 x W18 x L11mm	25
PCC52		2	1 x 4	H15 x W18 x L23mm	25
PCC53		3	2 x 4	H15 x W18 x L33mm	10
PCC152	15A Porcelain Connectors	2	1 x 5	H15 x W23 x L26mm	20
PCC153		3	2 x 5	H15 x W23 x L40mm	10
PC301	30A Porcelain Connectors	1	0	H19 x W26 x L16mm	20
PCC302		2	1 x 4	H19 x W26 x L32mm	10
PCC303		3	2 x 4	H19 x W26 x L47mm	10

Part No	Description	Dimensions	Pk Qty
2AF	Cartridge Fuses with ceramic body 1" long Conforms to BS 1362	2A	100
3AF		3A	
5AF		5A	
7AF		7A	
10AF		10A	
13AF		13A	

# Cable Protectors



Part No	Description	Product Information
<b>CPS</b>	Cable Protector small PVC	H11mm x W64mm x L9M Internal cavity: H6.4 x W16mm Ribbed surface Slit back
<b>CPM</b>	Cable Protector Medium PVC	H16mm x W76mm x L9M Internal cavity: H9.5 x 19mm Ribbed surface Slit back
<b>CPL</b>	Cable Protector Large PVC	H25mm x W76mm x L9M Internal cavity: H16 x W38mm Ribbed surface Slit back

Part No	Description	Dimensions	Pk Qty
<b>SP1</b>	Safeplate	50 x 76mm	100

# NOTES





# NOTES

# NORSLO FIRST FIX

GreenBrook Electrical  
West Road  
Harlow  
CM20 2BG  
Tel 01279 772 770  
[sales@greenbrook.co.uk](mailto:sales@greenbrook.co.uk)  
[www.greenbrook.co.uk](http://www.greenbrook.co.uk)