

# IP20 1.2W LED EMERGENCY DOWNLIGHT

## - Non-Maintained

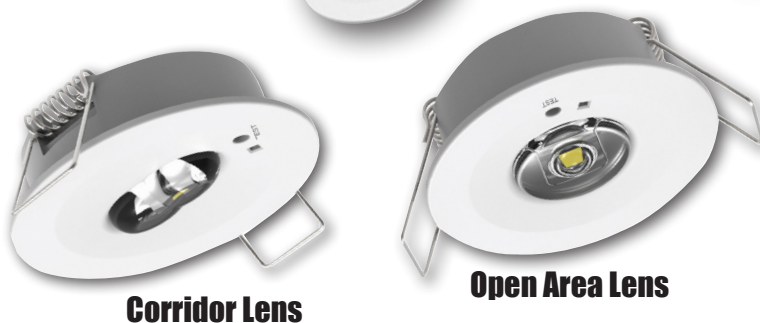
- + White bezel
- + Supplied with two interchangeable lenses (open area & corridor)
- + Driver & battery housing foldable for shallow ceiling voids
- + Status indicator built in
- + Other options available - Self test & Black finish
- + Emergency operation duration 3 hours



**SPOTEMDL1W**  
Black Frame Option - Special Order

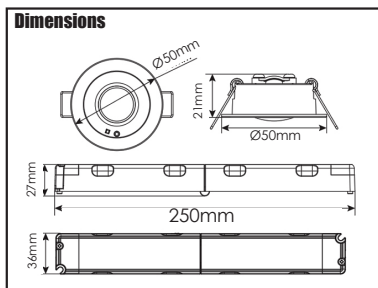


**SPOTEMDL1W**



**Corridor Lens**

**Open Area Lens**

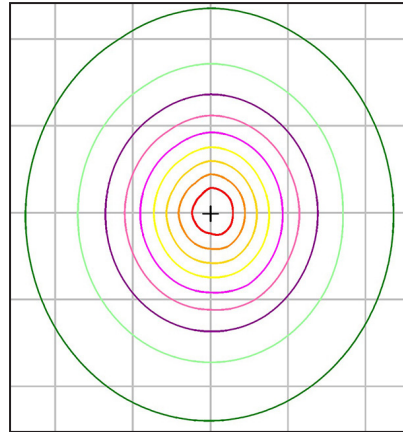


Please see page 2 for  
Photometric images & Spacing data

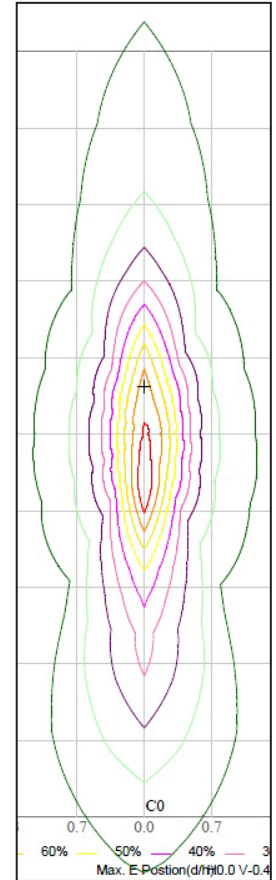
	<b>SPOTEMDL1W</b>
Description	LED Emergency Downlight
Barcode	5012739654893
Voltage	220-240V ~ 50.60Hz
Emergency Power	1.2W (charging power) 0.4W (charging power with full battery) 1W (Emergency mode)
Lumens	130 lumens
Emergency Lumens	120 lumens (open area lens) 130 lumens (corridor lens)
IP Rating	IP20
Emergency Duration	3 Hours
Colour Temperature	6500K
Ambient Temperature	5°C - 45°C
Function	Non-Maintained
Battery Type	LiFePO4 3.2V 1.5Ah
Beam Angle	Open Area Lens - 165° Corridor Lens - 160 x 50°
Dimensions	Lamp Head: Ø50 x 21mm Cut Out: Ø43-44mm Converter: 250 x 27 x 36mm
Mounting Type	Ceiling Recessed
Material	Polycarbonate
RAL Colour	RAL 9003
Product Weight	180g
Guarantee	3 Years
Conforms To	EN 60598-1:2015+A1:2018 BS EN 60598-1:2015+A1:2018 EN 60598-2-2:2012 BS EN 60598-2-2:2012 EN 60598-2-22:2014+A1:2020 BS EN 60598-2-22:2014+A1:2020 EN 62493:2015 BS EN 62493:2015

# IP20 1.2W LED EMERGENCY DOWNLIGHT - Non-Maintained

Photometric Data Images - Open Lens



Photometric Data Images - Corridor Lens



**Spacing Table Information**

	Wall to light (Transverse)
	Light to light (Transverse)
	Light to light (Transverse to Axial)
	Light to light (Axial to Axial)
	Light to Wall (Axial)

Open Area Spacing Data (1 lux)

Mounting Height (m)					
2.50	2.27	6.64	6.55	6.66	2.33
3.00	2.11	6.64	6.56	6.67	2.16

Corridor Spacing Data (1 lux)

Mounting Height (m)					
2.50	6.22	16.80	10.46	4.65	1.53
3.00	5.08	17.17	9.87	4.49	1.40