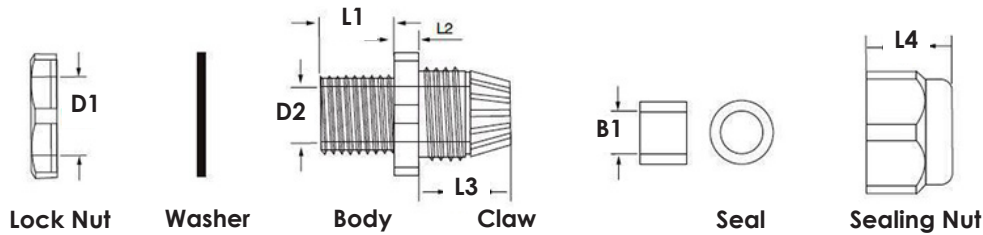


- + IP68
- + Pack qty 10
- + Available in a wide choice of sizes

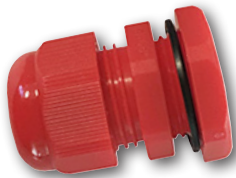
PVC Dome Top Glands

NORSLO

Mechanical Specification



| Gland Size | D1mm | D2mm | B1mm | L1mm | L4mm | Cable Range mm |
|------------|------|------|------|------|------|----------------|
| 20mm Short | 20 | 14.8 | 12.5 | 15 | 18.4 | 3 - 7 |
| 20mm Long | 20 | 15.5 | 14.5 | 15 | 19.5 | 10 - 14 |
| 25mm | 25 | 21 | 18.4 | 15 | 22.3 | 13 - 18 |
| 32mm | 32 | 26 | 26.2 | 15 | 24.8 | 18 - 25 |



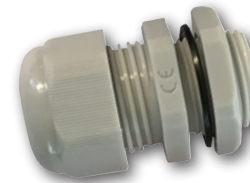
| | DTG20RS | DTG20RL | DTG25R |
|----------------------------|-------------------|-------------------|-------------------|
| Colour | Red | | |
| Dia Size (D1 mm) | 20 - Short | 20 - Long | 25 |
| IP Rating | IP68 | | |
| Barcode | 50127396 47000 | 50127396 47123 | 50127396 47048 |
| Thread & Locknut Dimension | Metric | | |
| Material | Nylon PA66 | | |
| Temperature Range | -20 to +80°C | | |
| Conforms To | BS EN 62444 | | |



| | DTG20WS | DTG20WL | DTG25W | DTG32W |
|------------------|-------------------|-------------------|-------------------|-------------------|
| Colour | white | | | |
| Dia Size (D1 mm) | 20 - Short | 20 - Long | 25 | 32 |
| IP Rating | IP68 | | | |
| Barcode | 50127396 47017 | 50127396 47130 | 50127396 47055 | 50127396 47093 |



| | DTG20BS | DTG20BL | DTG25B | DTG32B |
|------------------|-------------------|-------------------|-------------------|-------------------|
| Colour | Black | | | |
| Dia Size (D1 mm) | 20 - Short | 20 - Long | 25 | 32 |
| IP Rating | IP68 | | | |
| Barcode | 50127396 46997 | 50127396 47116 | 50127396 47031 | 50127396 47079 |



| | DTG20GS | DTG20GL | DTG25G | DTG32G |
|----------------------------|-------------------|-------------------|-------------------|-------------------|
| Colour | Grey | | | |
| Dia Size (D1 mm) | 20 - Short | 20 - Long | 25 | 32 |
| IP Rating | IP68 | | | |
| Barcode | 50127396 46980 | 50127396 47109 | 50127396 47024 | 50127396 47062 |
| Thread & Locknut Dimension | Metric | | | |
| Material | Nylon PA66 | | | |
| Temperature Range | -20 to +80°C | | | |
| Conforms To | BS EN 62444 | | | |

Tel: 01279 772 772

Fax: 01279 422 007

Email: sales@greenbrook.co.uk

www.greenbrook.co.uk