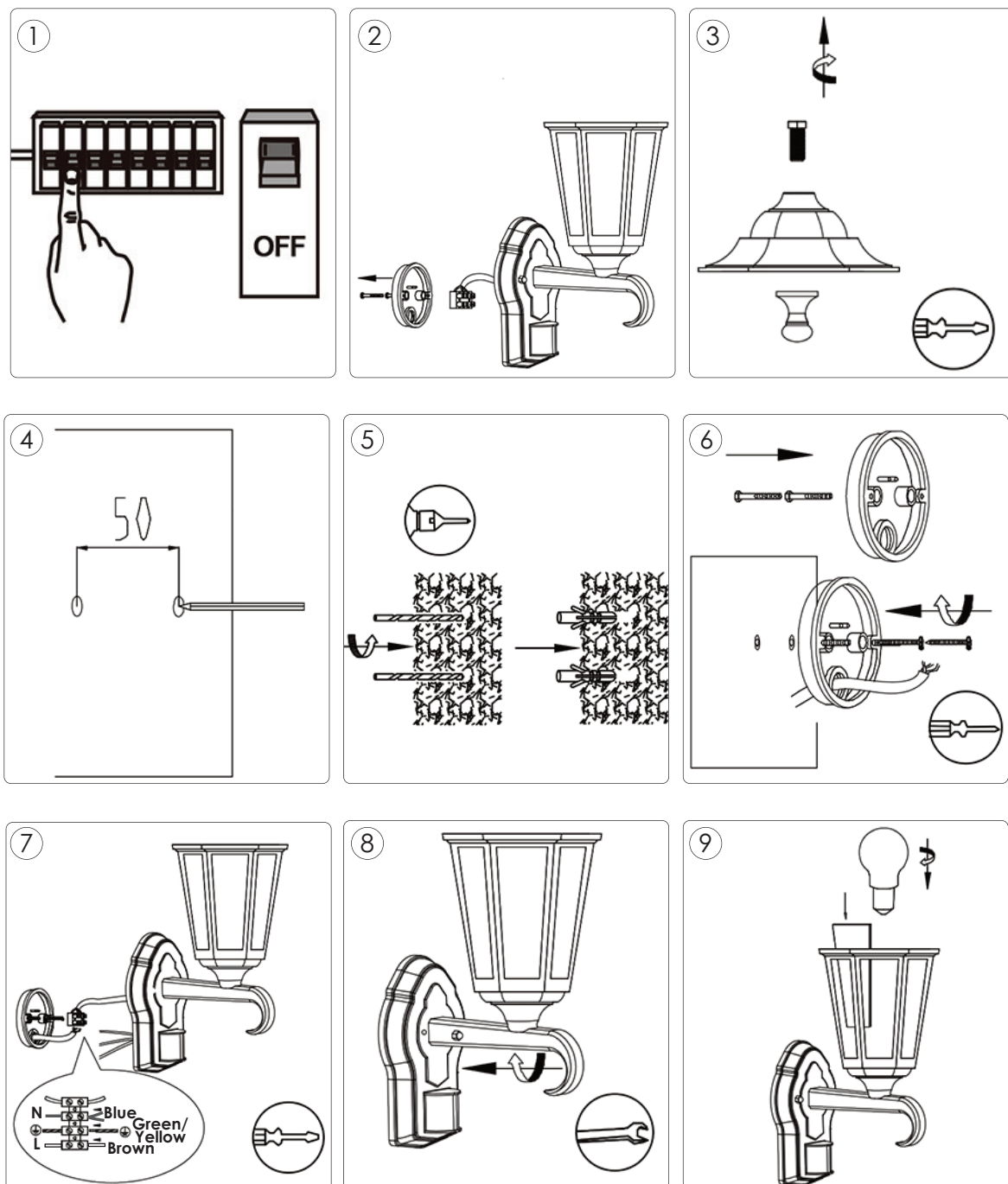


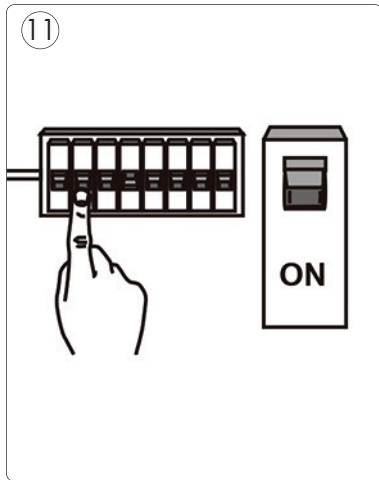
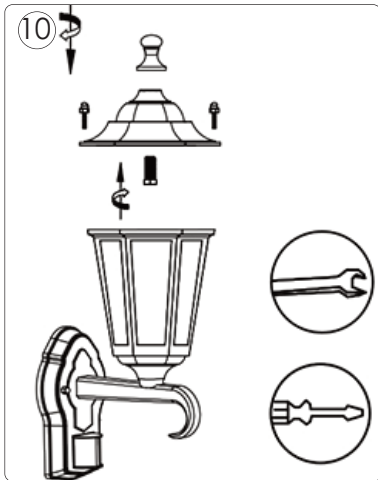
### IMPORTANT

This product should be installed by a competent person and in accordance with the current IET Wiring Regulations.  
If in doubt, consult a qualified electrician.

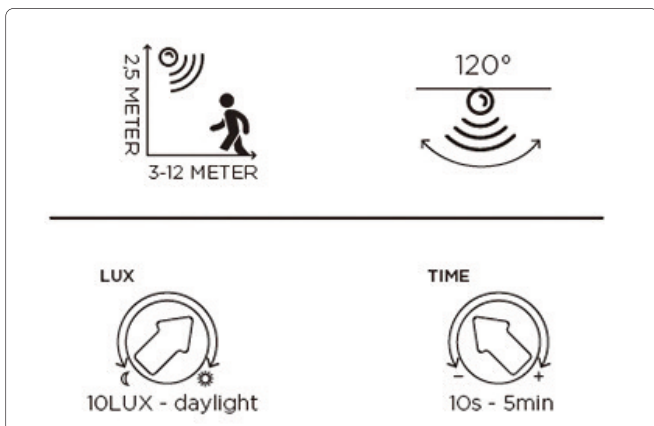


### INSTALLATION & OPERATION





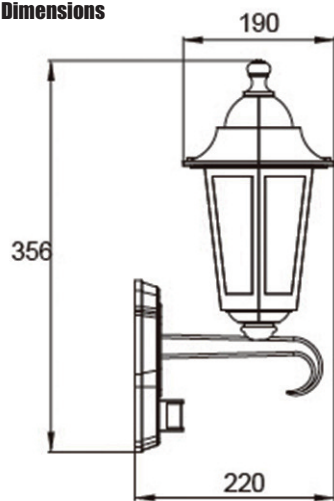
## PIR OPERATION



## TECHNICAL INFORMATION

Rated voltage:	230 - 240V AC ~ 50/60Hz
Wattage:	1 x 60W Max
IP Rating:	IP44
Lamp Type:	E27
Class Type:	Class 1
Detection Angle:	120°
Detection Distance:	3 - 12 Metres
Time Delay:	10 Secs to 5 Mins
Mount Height:	2.5 Metres
Housing:	Heavy Duty Aluminium body & glass diffuser
Conforms To:	BS EN 60598-1

## Dimensions



**GUARANTEE**  
Your GreenBrook Alfresco Fitting  
is guaranteed for 5 years from  
the date of purchase.  
This is in addition to your statutory rights.

*Please keep these instructions for future reference.*

**INSTALLER** - Please pass instruction manual onto the owner of the unit.

**GREEN  
BROOK**  
ELECTRICAL  
WEST ROAD . HARLOW  
ESSEX . CM20 2BG . UK  
info@greenbrook.co.uk  
www.greenbrook.co.uk