

Adaptable Boxes

- Galvanised Steel & Black Enamel

NORSLO

- + Lids are secured by M5 x 16mm mushroom head screws
- + Class 2 - Black enamelled inside & out
- + Class 3 - Pre-galvanised sheet steel



	3311/2BK	3311/2BP	3311/2GK	3311/2GP	332BK	332GK	332GP	333GK	333GP
Description	Adaptable Boxes								
Pack Qty	10							5	
Barcode	5012739614170	5012739614187	5012739614194	5012739614200	5012739614217	5012739614231	5012739614248	5012739614279	5012739614286
Dimensions	H3 x W3 x D1.5" / H75 x W75 x D38mm				H3 x W3 x D2" / H75 x W75 x D50mm			H3 x W3 x D3" / H75 x W75 x D75mm	
K/O Plain All 20mm K/O	2 K/O x 2 K/O	Plain	2 K/O x 2 K/O	Plain	2 K/O x 2 K/O		Plain	2 K/O x 2 K/O	Plain
Operational Temperature	-30°C - +100°C								
Material	Black Enamel		Galvanised Steel		Black Enamel	Galvanised Steel			
Product Weight (nett) Single Unit	193g	193g	193g	193g	226g	226g	226g	254g	254g
Packaged Weight (gross) Pack Qty	2383g	2383g	2128g	2128g	2506g	2239g	2239g	1356g	1356g
Guarantee	1 Year								
Conforms To	BS 4568								

TECHNICAL DATA SHEET

Part No Key

- GK = Galvanised with Knockouts
- GP = Galvanised Plain
- BK = Black Enamel with Knockouts
- BP = Black Enamel Plain

Adaptable Boxes

- Galvanised Steel & Black Enamel

NORSLO

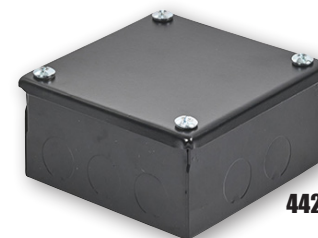
- + Lids are secured by M5 x 16mm mushroom head screws
- + Class 2 - Black enamelled inside & out
- + Class 3 - Pre-galvanised sheet steel



432GK



4411/2GK



442BK



443GK

	432GK	432GP	4411/2GK	4411/2GP	442BK	442GK	442GP	443GK	443GP
Description	Adaptable Boxes								
Pack Qty	5								
Barcode	5012739614538	5012739614545	5012739614583	5012739614590	5012739614606	5012739614620	5012739614637	5012739614668	5012739614675
Dimensions	H4 x W3 x D2" / H100 x W75 x D50mm		H4 x W4 x D1.5" / H100 x W100 x D38mm		H4 x W4 x D2" / H100 x W100 x D50mm			H4 x W4 X D3" / H100 x W100 x D75mm	
K/O Plain All 20mm K/O	3 K/O x 2 K/O	Plain	3 K/O x 2 K/O	Plain	3 K/O x 2 K/O	3 K/O x 2 K/O	Plain	3 K/O x 3 K/O	Galv
Operational Temperature	-30°C - +100°C								
Material	Galvanised Steel				Black Enamel	Galvanised Steel			
Product Weight (nett) Single Unit	257g	257g	296g	296g	343g	343g	343g	384g	384g
Packaged Weight (gross) Pack Qty	1183g	1183g	1575g	1575g	2033g	1800g	1800g	1989g	1989g
Guarantee	1 Year								
Conforms To	BS 4568								

Part No Key

- GK = Galvanised with Knockouts
- GP = Galvanised Plain
- BK = Black Enamel with Knockouts
- BP = Black Enamel Plain

Adaptable Boxes

- Galvanised Steel & Black Enamel

NORSLO

- + Lids are secured by M5 x 16mm mushroom head screws
- + Class 2 - Black enamelled inside & out
- + Class 3 - Pre-galvanised sheet steel



444GK



632GK



633GP

	444GK	444GP	632GK	632GP	633GK	633GP
Description	Adaptable Boxes					
Pack Qty	2		5		1	
Barcode	5012739614705	5012739614712	5012739615146	5012739615153	5012739615184	5012739615191
Dimensions	H4 x W4 x D4" / H100 x W100 x D100mm		H6 x W3 x D2" / H150 x W75 x D50mm		H6 x W3 x D3" / H150 x W75 x D75mm	
K/O Plain All 20mm K/O	3 K/O x 3 K/O	Plain	4 K/O x 2 K/O	Plain	4 K/O x 2 K/O	Plain
Operational Temperature	-30°C - +100°C					
Material	Galvanised Steel					
Product Weight (nett) Single Unit	444g	444g	340g	340g	420g	420g
Packaged Weight (gross) Pack Qty	978g	978g	1850g	1850g	458g	458g
Guarantee	1 Year					
Conforms To	BS 4568					

Part No Key

- GK = Galvanised with Knockouts
- GP = Galvanised Plain
- BK = Black Enamel with Knockouts
- BP = Black Enamel Plain

Adaptable Boxes

- Galvanised Steel & Black Enamel

NORSLO

- + Lids are secured by M5 x 16mm mushroom head screws
- + Class 2 - Black enamelled inside & out
- + Class 3 - Pre-galvanised sheet steel



642GP



643GP



644GK



6611/2GK

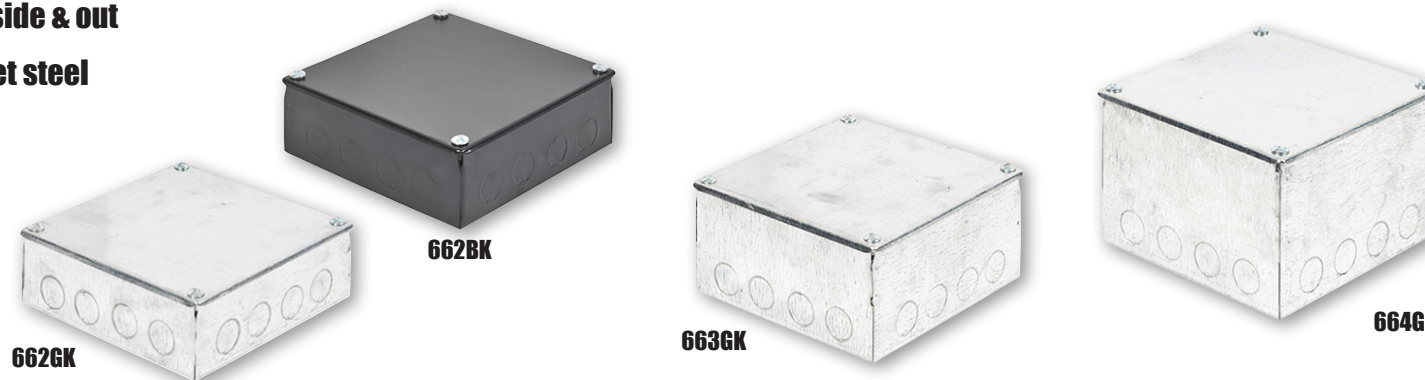
	642GK	642GP	643GK	643GP	644GK	644GP	6611/2GK	6611/2GP
Description	Adaptable Boxes							
Pack Qty	5				2		5	
Barcode	5012739615269	5012739615276	5012739615306	5012739615313	5012739615344	5012739615351	5012739615382	5012739615399
Dimensions	H6 x W4 x D2" / H150 x W100 x D50mm		H6 x W4 x D3" / H150 x W100 x D75mm		H6 x W4 x D4" / H150 x W100 x D100mm		H6 x W6 x D1.5" / H150 x W150 x D38mm	
K/O Plain All 20mm K/O	4 K/O x 3 K/O	Plain	4 K/O x 3 K/O	Plain	4 K/O x 3 K/O	Plain	4 K/O x 4 K/O	Plain
Operational Temperature	-30°C - +100°C							
Material	Galvanised Steel							
Product Weight (nett) Single Unit	417g	417g	588g	588g	819g	819g	414g	414g
Packaged Weight (gross) Pack Qty	2226g	2226g	3033g	3033g	1683g	1683g	2138g	2138g
Guarantee	1 Year							
Conforms To	BS 4568							

Adaptable Boxes

- Galvanised Steel & Black Enamel

NORSLO

- + Lids are secured by M5 x 16mm mushroom head screws
- + Class 2 - Black enamelled inside & out
- + Class 3 - Pre-galvanised sheet steel



	662BK	662GK	662GP	663GK	663GP	664GK	664GP
Description	Adaptable Boxes						
Pack Qty	6			5		2	2
Barcode	5012739615405	5012739615429	5012739615436	5012739615467	5012739615474	5012739615504	5012739615511
Dimensions	H6 x W6 x D2" / H150 x W150 x D50mm			H6 x W6 x D3" / H150 x W150 x D75mm		H6 x W6 x D4" / H150 x W150 x D100mm	
K/O Plain All 20mm K/O	4 K/O x 4K/O		Plain	4 K/O x 4 K/O	Plain	4 K/O x 4 K/O	Plain
Operational Temperature	-30°C - +100°C						
Material	Black Enamel	Galvanised Steel					
Product Weight (nett) Single Unit	569g	529g	529g	664g	664g	766g	766g
Packaged Weight (gross) Pack Qty	3625g	3267g	3267g	3550g	3550g	1600g	1600g
Guarantee	1 Year						
Conforms To	BS 4568						

Part No Key

- GP = Galvanised with Knockouts
- GP = Galvanised Plain
- BK = Black Enamel with Knockouts
- BP = Black Enamel Plain

Adaptable Boxes

- Galvanised Steel & Black Enamel

NORSLO

- + Lids are secured by M5 x 16mm mushroom head screws
- + Class 2 - Black enamelled inside & out
- + Class 3 - Pre-galvanised sheet steel

TECHNICAL DATA SHEET



666GP



932GK



943GK



943BP

	666GK	666GP	932GK	932GP	942GK	942GP	943GK	943BP	943GP
Description	Adaptable Boxes								
Pack Qty	2		1	1	1	1	1	1	1
Barcode	5012739 615542	5012739 615559	5012739 615665	5012739 615672	5012739 615689	5012739 615696	5012739 615702	5012739 627651	5012739 615719
Dimensions	H6 x W6 x D4" / H150 x W150 x D100mm		H6 x W6 x D6" / H150 x W150 x D150mm		H9 x W4 x D2" / H225 x W100 x D50mm		H9 x W4 x D3" / H225 x W100 x D75mm		
K/O Plain All 20mm K/O	4 K/O x 4 K/O		5 K/O x 5 K/O	Plain	5 K/O x 5 K/O	Plain	5 K/O x 5 K/O	Plain	
Operational Temperature	-30°C - +100°C								
Material	Galvanised Steel							Black Enamel	Galvanised Steel
Product Weight (nett) Single Unit	987g	570g	480g	480g	371g	371g	644g	712g	644g
Packaged Weight (gross) Pack Qty	1978g	1978g	488g	488g	404g	404g	689g	767g	689g
Guarantee	1 Year								
Conforms To	BS 4568								

Part No Key

- GK = Galvanised with Knockouts
- GP = Galvanised Plain
- BK = Black Enamel with Knockouts
- BP = Black Enamel Plain

Adaptable Boxes

- Galvanised Steel & Black Enamel

NORSLO

- + Lids are secured by M5 x 16mm mushroom head screws
- + Class 2 - Black enamelled inside & out
- + Class 3 - Pre-galvanised sheet steel



TECHNICAL DATA SHEET

	962GK	962GP	963GK	963GP	964GK	964GP	992GK	992GP
Description	Adaptable Boxes							
Pack Qty	5				2			
Barcode	5012739615740	5012739615757	5012739615788	5012739615795	5012739615825	5012739615832	5012739615863	5012739615870
Dimensions	H9 x W6 x D2" / H225 x W150 x D50mm		H6 x W6 x D3" / H225 x W150 x D75mm		H9 x W6 x D4" / H225 x W150 x D100mm		H9 x W9 x D2" / H225 x W225 x D50mm	
K/O Plain All 20mm K/O	5 K/O x 4 K/O	Plain	5 K/O x 4 K/O	Plain	5 K/O x 4 K/O	Plain	5 K/O x 5 K/O	Plain
Operational Temperature	-30°C - +100°C							
Material	Galvanised Steel							
Product Weight (nett) Single Unit	781g	781g	914g	914g	1045g	1045g	506g	506g
Packaged Weight (gross) Pack Qty	4450g	4450g	5300g	5300g	2131g	2131g	1067g	1067g
Guarantee	1 Year							
Conforms To	BS 4568							

Part No Key

- GK = Galvanised with Knockouts
- GP = Galvanised Plain
- BK = Black Enamel with Knockouts
- BP = Black Enamel Plain

Adaptable Boxes

- Galvanised Steel & Black Enamel

NORSLO

- + Lids are secured by M5 x 16mm mushroom head screws
- + Class 2 - Black enamelled inside & out
- + Class 3 - Pre-galvanised sheet steel



TECHNICAL DATA SHEET

	993BK	993GK	993GP	994GK	994GP	996BK	996GK	996GP
Description	Adaptable Boxes							
Pack Qty	2					1		
Barcode	5012739 615887	5012739 615900	5012739 615917	5012739 615948	5012739 615955	5012739 615962	5012739 615986	5012739 615993
Dimensions	H9 x W9 x D3" / H225 x W225 x D75mm			H9 x W9 x D4 / H225 x W225 x D100mm		H9 x W9 x D6" / H225 x W225 x D150mm		
K/O Plain All 20mm K/O	5 K/O x 5 K/O		Plain	5 K/O x 5 K/O		5 K/O x 5 K/O		Plain
Operational Temperature	-30°C - +100°C							
Material	Black Enamel	Galvanised Steel				Black Enamel	Galvanised Steel	
Product Weight (nett) Single Unit	1208g	1208g	1208g	1365g	1365g	1729g	1729g	1729g
Packaged Weight (gross) Pack Qty	2763g	2513g	2513g	2850g	2850g	1925g	1800g	1800g
Guarantee	1 Year							
Conforms To	BS 4568							

Part No Key

- GK** = Galvanised with Knockouts
- GP** = Galvanised Plain
- BK** = Black Enamel with Knockouts
- BP** = Black Enamel Plain

Adaptable Boxes

- Galvanised Steel & Black Enamel

NORSLO

- + Lids are secured by M5 x 16mm mushroom head screws
- + Class 2 - Black enamelled inside & out
- + Class 3 - Pre-galvanised sheet steel



	1262GK	1262GP	1263GK	1263BP	1263GP	1264GK	1264GP
Description	Adaptable Boxes						
Pack Qty	1						
Barcode	5012739612008	5012739612015	5012739612046	5012739612039	5012739612053	5012739612084	5012739612091
Dimensions	H12 x W6 x D2" / H300 x W150 x D50mm		H12 x W6 x D3" / H300 x W150 x D75mm			H12 x W6 x D4" / H300 x W150 x D100mm	
K/O Plain All 20mm K/O	7 K/O x 4 K/O			Plain		7 K/O x 4 K/O	Plain
Operational Temperature	-30°C - +100°C						
Material	Galvanised Steel			Black Enamel		Galvanised Steel	
Product Weight (nett) Single Unit	1031g	1031g	1160g	1160g	1160g	744g	744g
Packaged Weight (gross) Pack Qty	1150g	1150g	1218g	1327g	1218g	792g	792g
Guarantee	1 Year						
Conforms To	BS 4568						

Part No Key

- GK = Galvanised with Knockouts
- GP = Galvanised Plain
- BK = Black Enamel with Knockouts
- BP = Black Enamel Plain

Adaptable Boxes

- Galvanised Steel & Black Enamel

NORSLO

- + Lids are secured by M5 x 16mm mushroom head screws
- + Class 2 - Black enamelled inside & out
- + Class 3 - Pre-galvanised sheet steel



	1293GK	1293GP	1294GK	1294GP	1296GK	1296GP	12122GK	12122GP
Description	Adaptable Boxes							
Pack Qty	1							
Barcode	5012739612145	5012739612152	5012739612183	5012739612190	5012739612220	5012739612237	5012739611827	5012739611834
Dimensions	H12 x W9 x D3" / H300 x W225 x D75mm		H12 x W9 x D4" / H300 x W225 x D100mm		H12 x W9 x D6" / H300 x W225 x D150mm		H12 x W12 x D2" / H300 x W300 x D508mm	
K/O Plain All 20mm K/O	7 K/O x 5 K/O	Plain	7 K/O x 5 K/O	Plain	7 K/O x 5 K/O	Plain	7 K/O x 7 K/O	Plain
Operational Temperature	-30°C - +100°C							
Material	Galvanised Steel							
Product Weight (nett) Single Unit	1406g	1406g	1741g	1741g	2170g	2170g	1805g	1805g
Packaged Weight (gross) Pack Qty	1468g	1468g	1828g	1828g	2300g	2300g	2067g	2067g
Guarantee	1 Year							
Conforms To	BS 4568							

Part No Key

- GK = Galvanised with Knockouts
- GP = Galvanised Plain
- BK = Black Enamel with Knockouts
- BP = Black Enamel Plain

Adaptable Boxes

- Galvanised Steel & Black Enamel

NORSLO

- + Lids are secured by M5 x 16mm mushroom head screws
- + Class 2 - Black enamelled inside & out
- + Class 3 - Pre-galvanised sheet steel



12123GK



12124BK



12126GK

	12123GK	12123GP	12124BK	12124GK	12124GP	12126GK	12126GP
Description	Adaptable Boxes						
Pack Qty	1						
Barcode	5012739611865	5012739611872	5012739611889	5012739611902	5012739611919	5012739611940	5012739611957
Dimensions	H12 x W12 x D3" / H300 x W300 x D75mm			H12 x W12 x D4" / H300 x W300 x D100mm		H12 x W12 x D6" / H300 x W300 x D150mm	
K/O Plain All 20mm K/O	7 K/O x 7 K/O	Plain	7 K/O x 7 K/O		Plain	7 K/O x 7 K/O	Plain
Operational Temperature	-30°C - +100°C						
Material	Galvanised Steel		Black Enamel	Galvanised Steel			
Product Weight (nett) Single Unit	1781g	1781g	2176g	2176g	2176g	2375g	2375g
Packaged Weight (gross) Pack Qty	1850g	1850g	2334g	2181g	2181g	2513g	2513g
Guarantee	1 Year						
Conforms To	BS 4568						

Part No Key

- GK = Galvanised with Knockouts
- GP = Galvanised Plain
- BK = Black Enamel with Knockouts
- BP = Black Enamel Plain