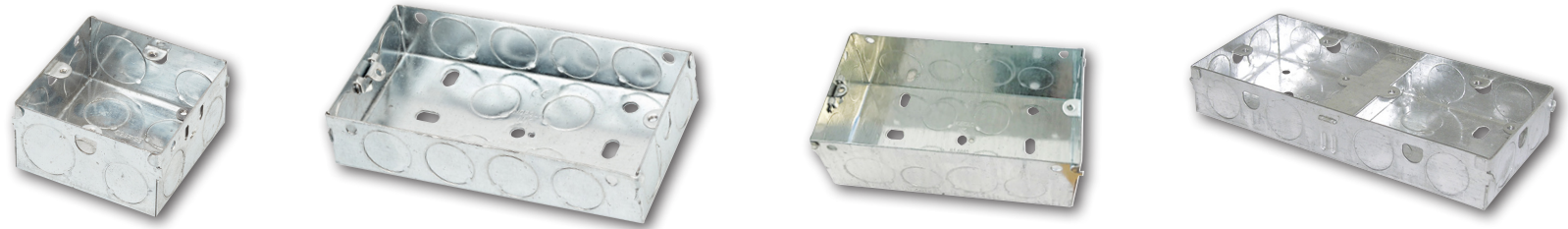


# Switch & Socket Boxes

- Conforms to BS 4662

## NORSLO

- + Suitable for use with flush mounted accessories
- + Manufactured from pre galvanised sheet steel
- + Integral Brass earth point
- + Chemical resistant
- + Floating lug for ease of installation (not DB, DB25 & ARCH)



	116	125	135	147	225	235	247	DB	DB25
<b>Description</b>	Switch & Socket Box 1 Gang - 16mm	Switch & Socket Box 1 Gang - 25mm	Switch & Socket Box 1 Gang - 35mm	Switch & Socket Box 1 Gang - 47mm	Switch & Socket Box 2 Gang - 25mm	Switch & Socket Box 2 Gang - 35mm	Shaver Box 2 Gang - 47mm	Dual Box 2 Gang - 35mm	Dual Box 2 Gang - 25mm
<b>Pack Qty</b>	20	10	10	10	5	5	5	5	5
<b>Barcode</b>	5012739 611780	5012739 611964	5012739 612305	5012739 612381	5012739 613104	5012739 613128	5012739 613173	5012739 617799	5012739 617805
<b>K/O Dimensions (mm)</b>	L25 x W8	Ø 20mm	Ø 20mm + Ø 25mm	Ø 20mm + Ø 25mm	Ø 20mm	Ø 20mm + Ø 25mm	Ø 20mm + Ø 25mm	Ø 20mm + Ø 25mm	Ø 20mm
<b>K/O Qty</b>	4	12	9 + 3	6 + 6	16	13 + 3	10 + 6	8 + 8	16
<b>Material</b>	Pre-Galvanised Steel								
<b>Product Weight</b>	73.5g	100.2g	120.4g	147g	156.6g	184.4g	221g	220.6g	198.4g
<b>Guarantee</b>	1 Year								
<b>Conforms To</b>	BS 4622								

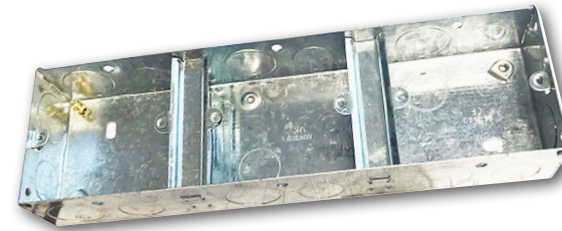
# Switch & Socket Boxes

- Conforms to BS 4662

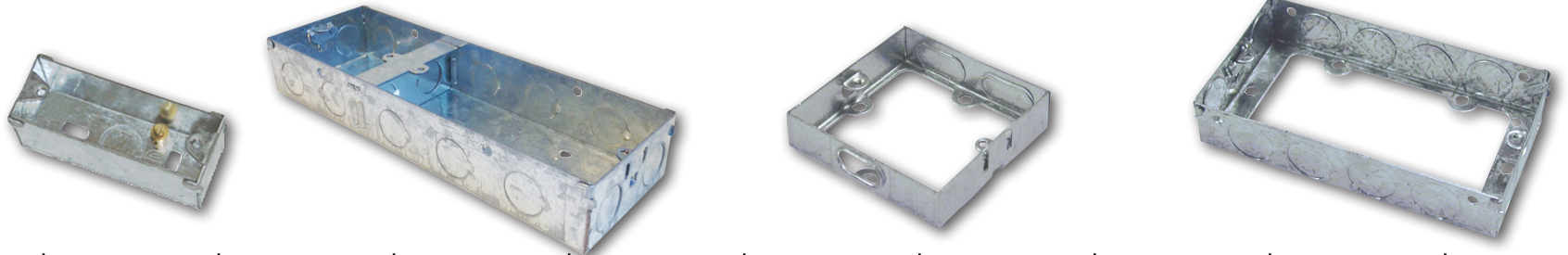
**GREEN  
BROOK  
ELECTRICAL**

## NORSLO

- + Suitable for use with flush mounted accessories
- + Manufactured from pre galvanised sheet steel
- + Integral Brass earth point
- + Chemical resistant
- + Floating lug for ease of installation (not DB, DB25 & ARCH)



**New  
DB35111**



	<b>ARCH</b>	<b>DB3512</b>	<b>DB35111</b>	<b>116EB</b>	<b>125EB</b>	<b>135EB</b>	<b>216EB</b>	<b>225EB</b>	<b>235EB</b>
<b>Description</b>	Dual Box 1 Gang - 25mm	Dual Switch & Socket Box 1 & 2 Gang - 35mm	Dual Switch & Socket Box 1 & 3 Gang - 35mm	Extension Box 1 Gang - 16mm	Extension Box 1 Gang - 25mm	Extension Box 1 Gang - 35mm	Extension Box 2 Gang - 16mm	Extension Box 2 Gang - 25mm	Extension Box 2 Gang - 35mm
<b>Pack Qty</b>	20	5	5	20	10	10	10	5	5
<b>Barcode</b>	5012739 616426	5012739 640889	5012739 648373	5012739 611797	5012739 611964	5012739 612312	5012739 613098	5012739 613111	5012739 613135
<b>K/O Dimensions (mm)</b>	Ø 16mm	Ø 20mm + Ø 25mm	Ø 20mm + Ø 25mm	L25 x W10	Ø 20mm	Ø 20mm	L25 x W10	Ø 20mm	Ø 20mm + Ø 25mm
<b>K/O Qty</b>	3	16 + 2	11 + 8	2	8	8	6	12	9 + 3
<b>Material</b>	Pre-Galvanised Steel								
<b>Product Weight</b>	54.35g	275g	320g	44.15g	70.3g	90.4g	68g	106g	133.6g
<b>Guarantee</b>	1 Year								
<b>Conforms To</b>	BS 4622								

**TECHNICAL DATA SHEET**

**GREEN  
BROOK  
ELECTRICAL**

Tel: 01279 772 772  
Fax: 01279 422 007  
Email: sales@greenbrook.co.uk  
www.greenbrook.co.uk



Rev3-08.02.21