

INSTALLATION PRODUCTS

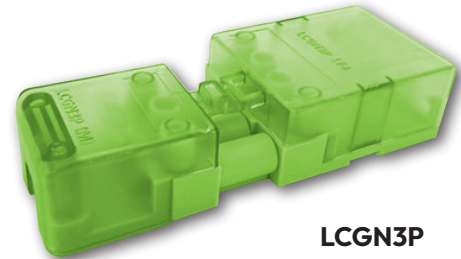


Lighting Connectors

20 Amp Lighting Connector - For 3 & 4 Way Flex

- ✓ Easy lock and release system
- ✓ Large terminal for easy access
- ✓ Designed and manufactured by GreenBrook

QUICK3 Connekt 3

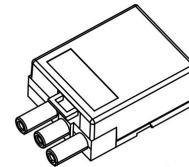


LCGN3P
3 Way Connector
20 Amp Lighting Connector

TECHNICAL INFORMATION		
Description	3 Way Connector	4 Way Connector
Barcode	5012739 641404	5012739 645754
Max Voltage	400V	
Male Connector	1 x 2.5mm ² 3 core flex	1 x 2.5mm ² 4 core flex
Female Connector	3 x 2.5mm ² flat Twin & Earth	3 x 2.5mm ² flat Twin & Earth
Housing Material	Nylon 66 (PA66)	
Product Finish	Polypropylene Enclosure, Nylon Connector	
IP Rating	IP20	
Box Qty	50	
Dimensions	L110x W42 x H22.3mm	L113x W55 x H22.5mm
Product Weight	0.55kg	0.79Kg
Guarantee	1 year	
Conforms to	EN 61535	

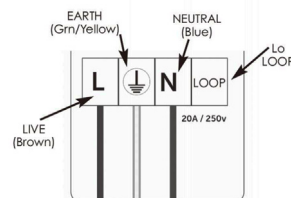
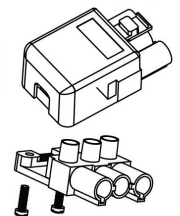
Female Socket

Up-to 3 x 2.5mm² Twin & Earth can be used.



Male Plug

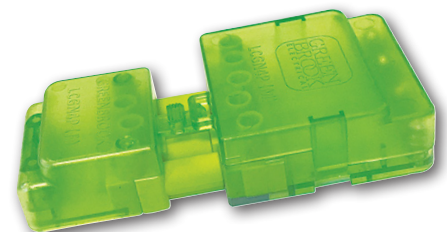
Up-to 1 x 2.5mm² 3 core flex can be used.



Note:

- These couplers are suitable for installation in NON-READY accessible areas
- This system is NOT a replacement for a domestic plug & socket outlet system.
- Installation couplers are intended for connection and disconnection without load.
- Any dangerous compatibility between manufacturer installation coupler system is not automatically prevented by Compliance with IEC EN61535.

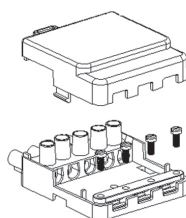
QUICK4 Connekt 4



LCGN4P
4 Way Connector
20 Amp Lighting Connector

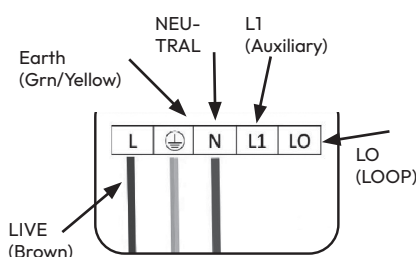
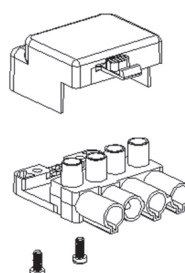
Female Socket

Up-to 3 x 2.5mm² Twin & Earth can be used.



Male Plug

Up-to 1 x 2.5mm² 4 core flex can be used.



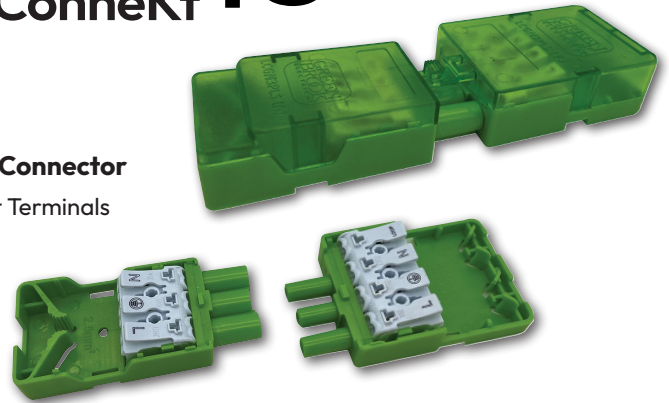
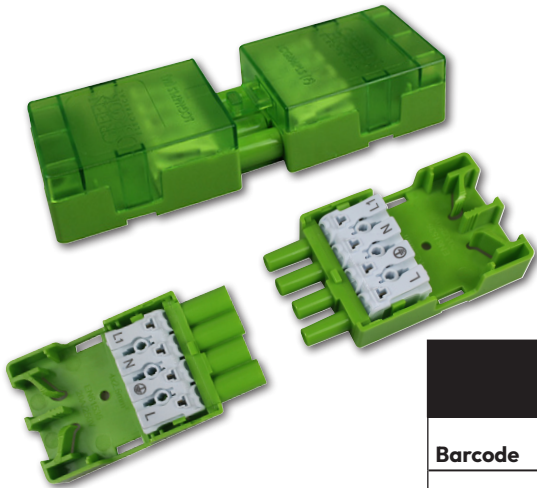
Lighting Connectors

20 Amp Lighting Connector with Quick Click Push-Fit Terminals

- ✓ IP20
- ✓ 250 Volt / 20Amp Plug-in Connector
- ✓ Easy lock and release system
- ✓ Push-fit cord grips
- ✓ Large terminal for easy access
- ✓ Designed and manufactured by GreenBrook

QUICK+3
Connekt

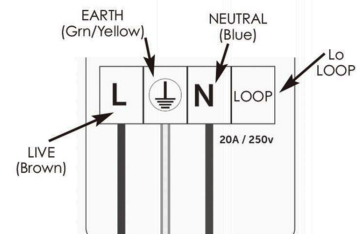
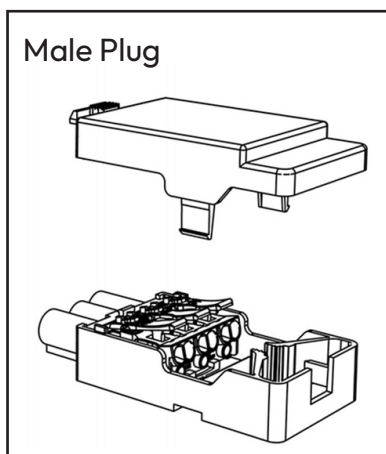
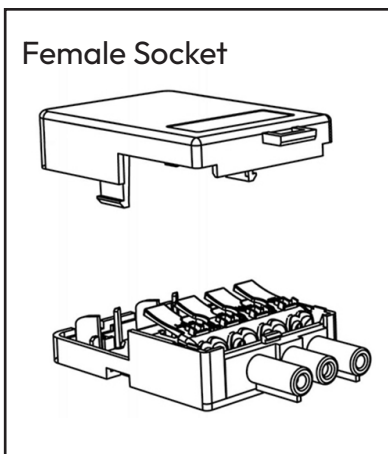
LCGN3PLS
20 Amp Lighting Connector
Quick Click Push-Fit Terminals



QUICK+4
Connekt

LCGN4PLS
20 Amp Lighting Connector
Quick Click Push-Fit Terminals
Allows connection of permanent Live & Switched Live for emergency lighting

TECHNICAL INFORMATION		
Barcode	5012739 647567	5012739654992
Max Voltage	250V / 20Amp	
Male Connector	1 x 2.5mm ² 3 core flex, screw cord grip	2 x 2.5mm ² Solid 4 core cable Max or 2 x 2.5mm ² 3 Core Flex
Female Connector	3 x 2.5mm ² Twin & Earth, loop terminal	2 x 2.5mm ² Solid 4 core cable Max or 2 x 2.5mm ² 3 Core Flex
Housing Material	Nylon 66 (PA66)	
Product Finish	Polypropylene Enclosure, Nylon Connector	
IP Rating	IP20	
Terminal Material	Solid Ni Plated Brass	
Box Qty	50	
Dimensions	L142.5 x W45.5 x H21.6mm	L153 x W48 x H23mm
Product Weight	68.5g	84g
Guarantee	1 year	
Conforms to	EN 61535	



Connection Box

- ✓ For protection or electrical connections
- ✓ External easy to use cable clamps
- ✓ Simple one piece snap cover with screw fixings
- ✓ Optional screw or cable tie box fixing
- ✓ Will pass through a 50mm diameter hole
- ✓ Fully assembled



CHOC30A Connection Box with cable clamps

Come with Free POS
Display as shown
H28 x W110 x D49mm
(including clamps)



CHOC30A-10 Connection Box with cable clamps

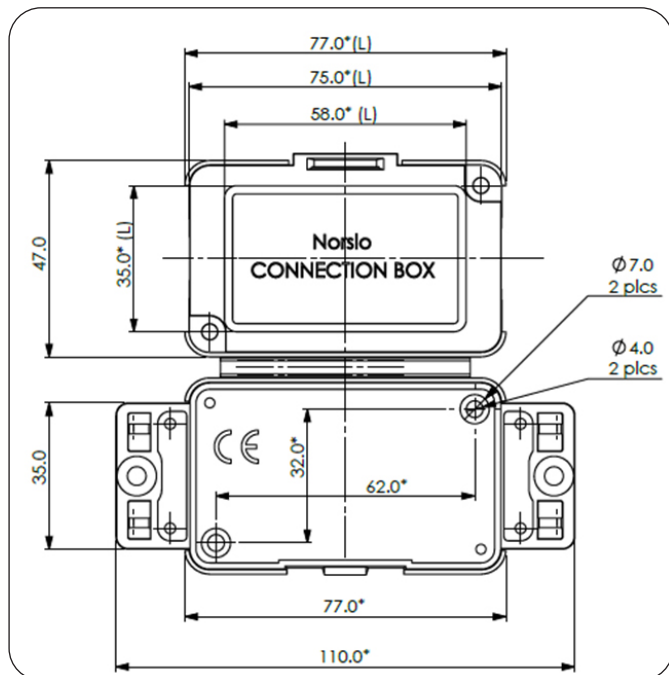
(in poly bag)
H28 x W110 x D49mm
(including clamps)

Registered Design

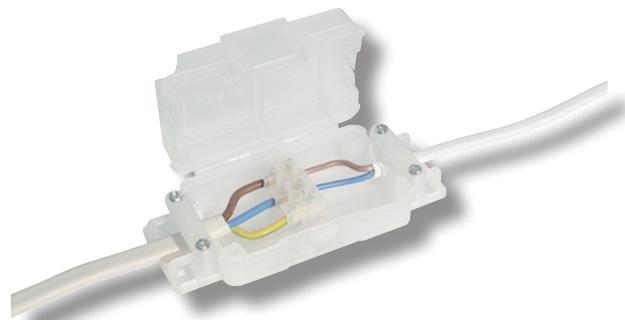
For 2A - 30A terminal strips

TECHNICAL INFORMATION		
Barcode	5012739 607370	
Rated Voltage	250V	
Number of Terminals that can fit inside CHOC30A, when located on peg	Horizontal Positioning	
	2 Amp - 8 terminals 5 Amp - 6 terminals 15 Amp - 4 terminals 30 Amp - 4 terminals	
Temperature Range	Vertical Positioning	
	2 Amp - 4 terminals 5 Amp - 4 terminals 15 Amp - 2 terminals 30 Amp - 2 Terminals	
	Temperature Range	-5 to +60°C
	Max Conductor Size	4mm ²
Box Qty	50	
Product Weight	28g	
Product Finish	Natural Polypropylene	
Guarantee	1 Year	

'Maintenance Free & Tamperproof'



CHOC30A- Comes with a Free POS Display



Connection Boxes

- ✓ For protection or electrical connections
- ✓ External easy to use cable clamps
- ✓ Various fastening options
- ✓ Simple one piece snap cover with screw fixings
- ✓ Optional screw or cable tie box fixing
- ✓ Will pass through a 50mm diameter hole
- ✓ Fully assembled

CHOCBOX +

Registered Design



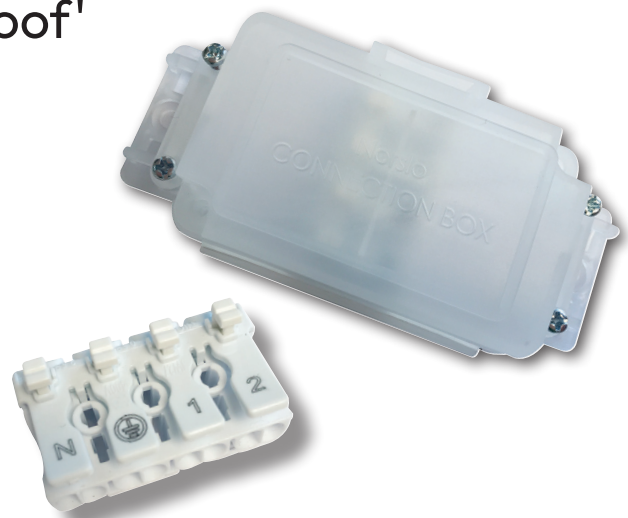
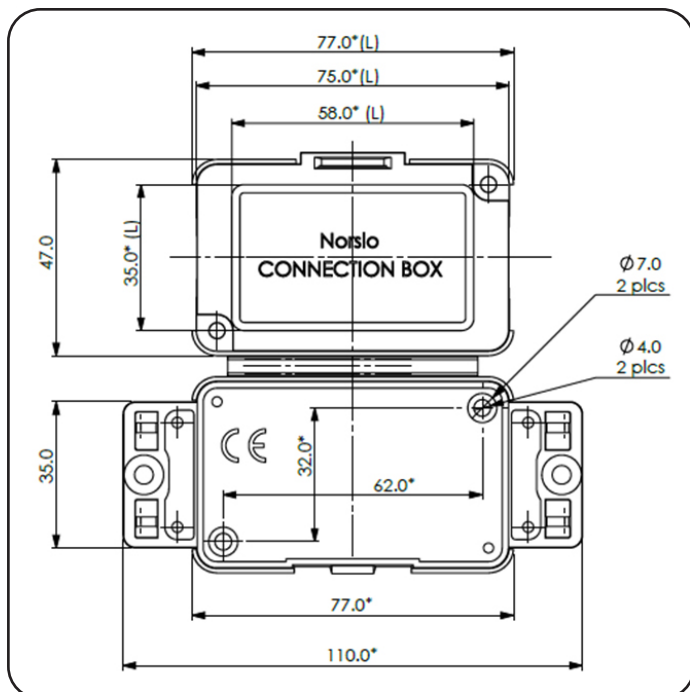
CHOC30APLS
CHOCBOX+
W47 x L110 x D29mm

TECHNICAL INFORMATION

Barcode	5012739 647574
Rated Voltage	250V
Terminal Block Size	20 Amp
Temperature Range	-5 to +60°C
Max Conductor Size	2.5mm ²
Normal Box Qty	50
Product Weight	41g
Dimensions	W47 x L110 x D29mm
Product Finish	Natural Polypropylene
Guarantee	1 Year
Conforms to	BS EN 60670-22

Complete with 4 Connection 20A Quick Connector Block

'Maintenance Free & Tamperproof'



Complete with 20A
Quick release
connector block

Connection Boxes

- ✓ For protection of electrical connections
- ✓ Simple One piece base / snap close lid / quick release
- ✓ Will pass through a 50mm diameter hole
- ✓ Fully assembled

For 2A - 30A terminal Strips



CHOC30E

Connection Box - Economy

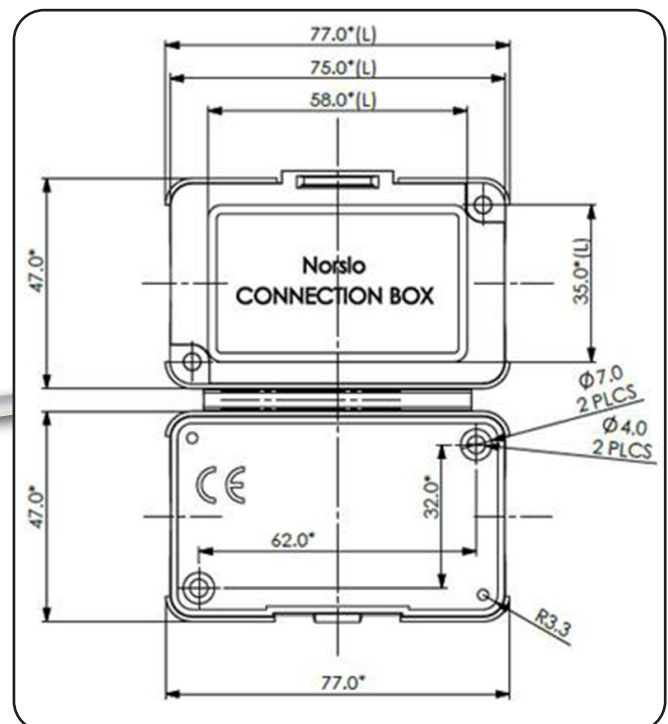
H27 x W77 x D49mm

(without cable clamps)

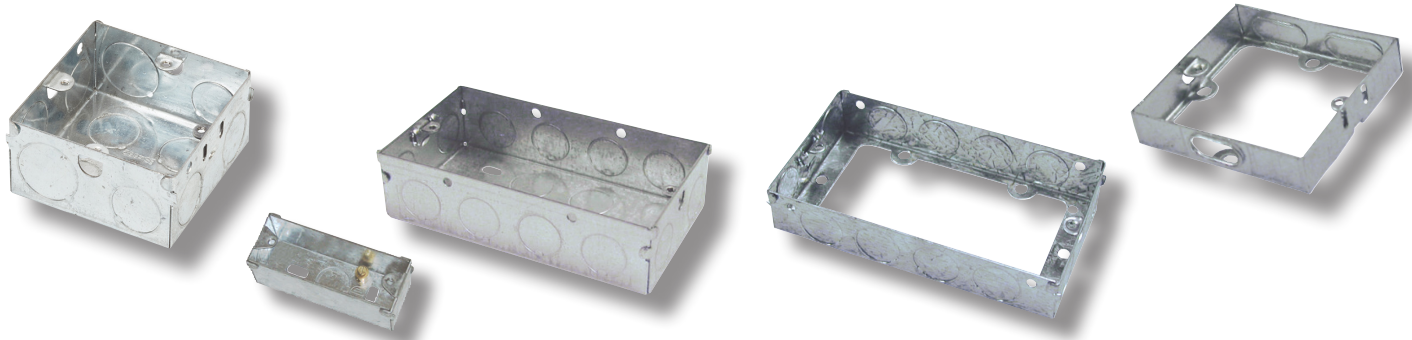
TECHNICAL INFORMATION	
Barcode	5012739 617164
Rated Voltage	250V
Terminal Block Size	2 to 30 Amp
Temperature Range	-5 to +60°C
Max Conductor Size	4mm ²
Box Qty	50
Product Weight	22.5g
Product Finish	Natural Polypropylene
Guarantee	1 Year
Conforms to	BS EN 60670-22



Box
Qty 50



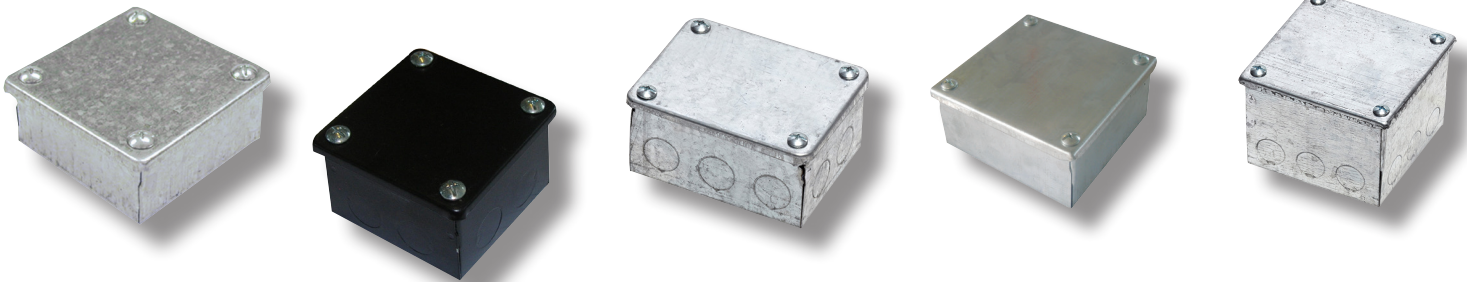
Switch & Socket Boxes



Part No	Description	Gang	Depths	Pk Qty
116	Switch & Socket Boxes	1 gang	16mm	20
125		1 gang	25mm	10
135		1 gang	35mm	10
147		1 gang	47mm	10
225		2 gang	25mm	5
235		2 gang	35mm	5
247	Shaver Box	2 gang	47mm	5
DB	Dual Box	2 gang	35mm	5
DB25	Dual Box	2 gang	25mm	5
ARCH	Architrave	1 gang	25mm	20
DB3512	Switch & Socket Box Steel Dual	1 gang & 2 gang	35mm K/O ø 20mm	5

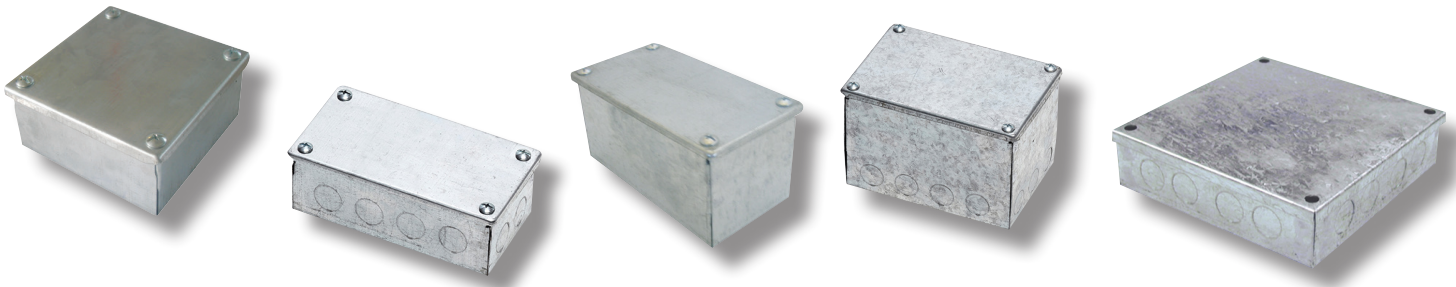
Part No	Description	Gang	Depths	Pk Qty
116EB	Extension Boxes	1 gang	16mm	20
125EB		1 gang	25mm	10
135EB		1 gang	35mm	10
216EB		2 gang	16mm	10
225EB		2 gang	25mm	5
235EB		2 gang	35mm	5

Adaptable Boxes



Part No BLACK / GALV	Dimensions	K/O Plain	Pk Qty
3311/2BK 3311/2BP 3311/2GK 3311/2GP	H3 x W3 x D1.5" / H75 x W75 x D38mm	K/O Plain	10
332BK 332GK 332GP	H3 x W3 x D2" / H75 x W75 x D50mm	K/O Plain	10
333GK 333GP	H3 x W3 x D3" / H75 x W75 x D75mm	K/O Plain	5
432GK 432GP	H4 x W3 x D2" / H100 x W75 x D50mm	K/O Plain	5
4411/2BP 4411/2GK 4411/2GP	H4 x W4 x D1.5" / H100 x W100 x D38mm	Plain K/O Plain	5
442BK 442GK 442GP	H4 x W4 x D2" / H100 x W100 x D50mm	K/O Plain	5
443GK 443GP	H4 x W4 x D3" / H100 x W100 x D75mm	K/O Plain	5

Adaptable Boxes



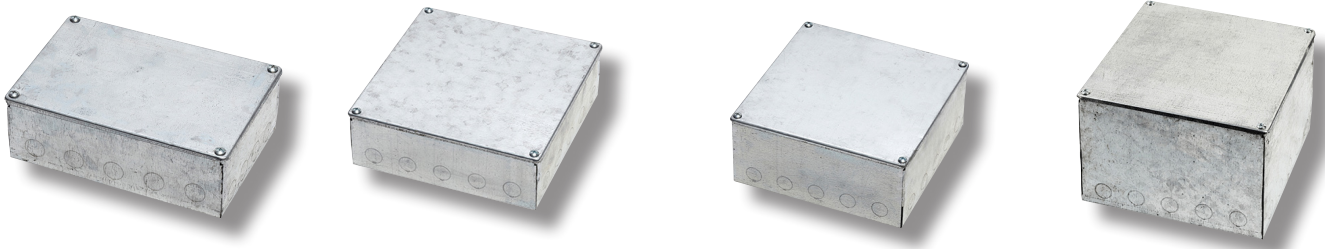
Part No GALV	Dimensions	K/O Plain	Pk Qty
444GK 444GP	H4 x W4 x D4" / H100 x W100 x D100mm	K/O Plain	2
632GK 632GP	H6 x W3 x D2" / H150 x W75 x D50mm	K/O Plain	5
633GK 633GP	H6 X W3 X D3" / H150 x W75 x D75mm	K/O Plain	5
642GK 642GP	H6 X W4 X D2" / H150 X W100 X D50mm	K/O Plain	5
643GK 643GP	H6 X W4 X D3" / H150 X W100 X D75mm	K/O Plain	5
644GK 644GP	H6 X W4 X D4" / H150 X W100 X D100mm	K/O Plain	2
6611/2GK 611/2GP	H6 X W6 X D1.5" / H150 X W150 X D38mm	K/O Plain	5

Adaptable Boxes



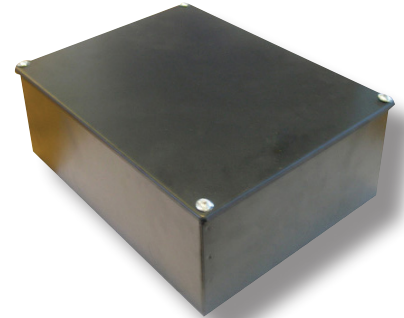
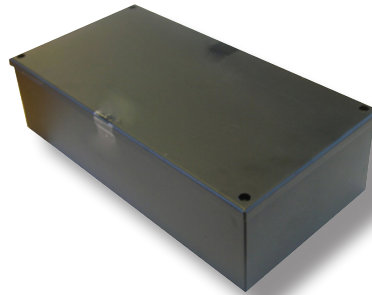
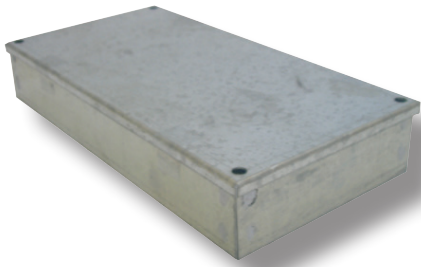
Part No BLACK / GALV	Dimensions	K/O Plain	Pk Qty
662BK 662GK 662GP	H6 x W6 x D2" / H150 x W150 x D50mm	K/O Plain	6
663GK 663GP	H6 x W6 x D3" / H150 x W150 x D75mm	K/O Plain	5
664GK 664GP	H6 X W6 X D4" / H150 X W150 X D100mm	K/O Plain	2
666GK 666GP	H6 X W6 X D6" / H150 X W150 X D150mm	K/O Plain	2
932GK 932GP	H9 X W3 X D2" / H225 X W75 X D50mm	K/O Plain	1
942GK 942GP	H9 X W4 X D2" / H225 X W100 X D50mm	K/O Plain	1
943BP 943GK 943GP	H9 X W4 X D3" / H225 X W100 X D75mm	K/O Plain	1

Adaptable Boxes



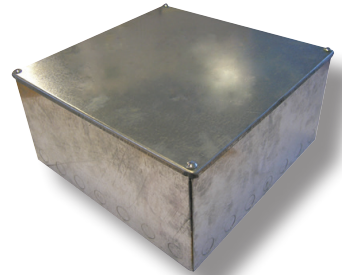
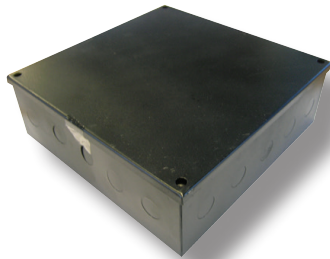
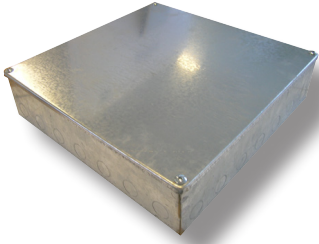
Part No BLACK / GALV	Dimensions	K/O Plain	Pk Qty
962GK 962GP	H9 x W6 x D2" / H225 x W150 x D50mm	K/O Plain	5
963GK 963GP	H9 x W6 x D3" / H225 x W150 x D75mm	K/O Plain	5
964GK 964GP	H9 x W6 x D4" / H225 x W150 x D100mm	K/O Plain	2
992GK 992GP	H9 x W9 x D2" / H225 x W225 x D50mm	K/O Plain	2
993BK 993GK 993GP	H9 x W9 x D3" / H225 x W225 x D75mm	K/O K/O Plain	2
994GK 994GP	H9 x W9 x D4" / H225 x W225 x D100mm	K/O Plain	2
996BK 996GK 996GP	H9 x W9 x D6" / H225 x W225 x D150mm	K/O K/O Plain	1

Adaptable Boxes



Part No BLACK / GALV	Dimensions	K/O Plain	Pk Qty
1262GK 1262GP	H12 x W6 x D2" / H300 x W150 x D50mm	K/O Plain	1
1263GK 1263BP 1263GP	H12 x W6 x D3" / H300 x W150 x D75mm	K/O Plain Plain	1
1264GK 1264GP	H12 x W6 x D4" / H300 x W150 x D100mm	K/O Plain	1
1293GK 1293GP	H12 x W9 x D3" / H300 x W225 x D75mm	K/O Plain	1
1294GK 1294GP	H12 x W9 x D4" / H300 x W225 x D100mm	K/O Plain	1
1296GK 1296GP	H12 x W9 x D6" / H300 x W225 x D150mm	K/O Plain	1
12122GK 12122GP	H12 x W12 x D2" / H300 x W300 x D50mm	K/O Plain	1

Adaptable Boxes



Part No BLACK / GALV	Dimensions	K/O Plain	Pk Qty
12123GK 12123GP	H12 x W12 x D3" / H300 x W300 x D75mm	K/O Plain	1
12124BK 12124GK 12124GP	H12 x W12 x D4" / H300 x W300 x D100mm	K/O K/O Plain	1
12126GK 12126GP	H12 x W12 x D6" / H300 x W300 x D150mm	K/O Plain	1

Rubber Gaskets for Boxes



Part No	Description	Dimensions	Pk Qty
33RG	Rubber Gasket	H3 x W3" / H75 x W75mm	10
44RG	Rubber Gasket	H4 x W4" / H100 x W100mm	10
66RG	Rubber Gasket	H6 x W6" / H150 x W150mm	10

Junction Boxes



Part No	Description	Product Information	Pk Qty
PJ6535K	IP44 Weatherproof rating Circular Plastic	ø 65mm x D35mm	5
PJ8040K	Junction Box with knockouts & press on lid	ø 80mm x D40mm	
PJ884K	IP44 Weatherproof rating Square Plastic	H80 x W80 x D40mm	5
PJ10105K	IP55 Weatherproof rating Plastic Junction Box with knockouts & screw on lid	H100 x W100 x D50mm	1
PJ1285K		W80 x W120 x D50mm	
PJ15117K		H110 x W150 x D70mm	
PJ19147K		H140 x W190 x D70mm	
PJ10105P	IP54 Weatherproof rating Plastic Junction Box with smooth walls & screw on lid	H100 x W100 x D50mm	1
PJ1285P		H80 x W120 x D50mm	
PJ15117P		H110 x W150 x D70mm	
PJ19147P		H140 x W190 x D70mm	
PJ24199P		H190 x W240 x D90mm	
PJ302212P		H220 x W300 x D120mm	
PJ383012P		H380 x W300 x D120mm	
PJ463812P	H380 x W460 x D120mm		

Grommets & Grommet Strip PVC



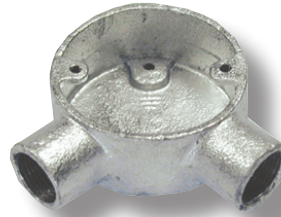
Part No	Description	Nominal Panel Hole Dimensions	Panel Thickness	Max Cable Size	Pk Qty
GBP16 GBP20 GBP25 GBP32 GBP38 GBP50	Blanking Plug	ø 16mm	1.6mm	-	100
		ø 20mm		-	100
		ø 25mm		-	100
		ø 32mm		-	50
		ø 38mm		-	25
		ø 50mm		-	25
GO16 GO20 GO25 GO32 GO38 GO50	Open Grommet	ø 16mm	1.6mm	11.9mm	100
		ø 20mm		15.7mm	100
		ø 25mm		19.4mm	100
		ø 32mm		23.1mm	50
		ø 38mm		31.7mm	25
		ø 50mm		43.8mm	20
GSBT20 GSBT25 GSBT32 GSBT38 GSBT50	Semi-Blind Grommet (top diaphragm)	ø 20mm	1.6mm	-	100
		ø 25mm		-	100
		ø 32mm		-	50
		ø 38mm		-	25
		ø 50mm		-	20
SGB20 SGB25 SGB32	Super (Quick-fit) Blanking Plug	ø 20mm	1.6mm	-	100
		ø 25mm		-	100
		ø 32mm		-	50
SGO20 SGO25 SGO32	Super (Quick-fit) Open Grommet	ø 20mm	1.6mm	15.7mm	100
		ø 25mm		19.5mm	100
		ø 32mm		26.5mm	50
GS1 GS2 GS3 GS4 GS5	Grommet Strip Black PVC	-	1mm - 2mm	-	50M Reel
		-	1.5mm - 2.8mm	-	50M Reel
		-	2.7mm - 3.8mm	-	50M Reel
		-	3.7mm - 5.2mm	-	25M Reel
		-	5.3mm - 6.8mm	-	25M Reel
B20 B25	Conduit Bushes	ø 20mm	-	-	100
		ø 25mm	-	-	

Dry Lining Boxes



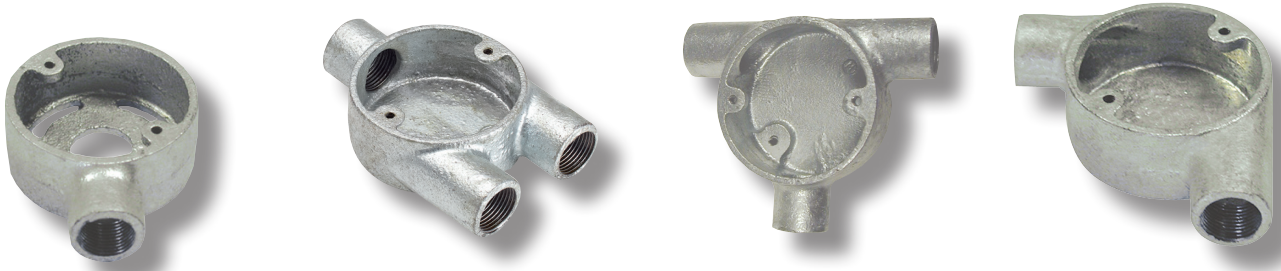
Part No	Description	Max Wall/Plasterboard Thickness	K/O Dim	K/O Qty
DL1N	1 Gang - 35mm Deep Cable Entry Dim - 2 x 16 x 26mm	16mm	1 x 25mmø	10
DL2N	2 Gang - 35mm Deep Cable Entry Dim - 2 x 16 x 26mm	16mm	1 x 25mmø	10
DL147N	1 Gang - 47mm Deep Cable Entry Dim - 2 x 16 x 26mm	30mm	1 x 25mmø	20
DL247N	2 Gang - 47mm Deep Cable Entry Dim - 2 x 16 x 26mm	30mm	1 x 25mmø	10
DLCN	1 Gang Circular 32mm Deep, 58.4mm Inner dimensions, 78.6mm Outer Dimensions	20mm	2 x 20mmø	10
DLDN	Dual Box - 35mm Deep Cable Entry Dim - 6 x 6 x 26mm	20mm	2 x 25mmø	10

Malleable Conduit Boxes



Part No BLACK /GALV	Description	Thread ø	Pk Qty
20B1 25B1 20G1N 25G1N	Terminal Box	ø 20mm ø 25mm ø 20mm ø 25mm	10
20B2 25B2 20G2N 25G2N	Through Box	ø 20mm ø 25mm ø 20mm ø 25mm	10
20B3 25B3 20G3N 25G3N	Tee Box	ø 20mm ø 25mm ø 20mm ø 25mm	10
20B4 20G4N 25G4N	Intersection Box	ø 20mm ø 20mm ø 25mm	10
20B5 25B5 20G5N 25G5N	Angle Box	ø 20mm ø 25mm ø 20mm ø 25mm	10
20G6N	H Box	ø 20mm	10
20BU 20GUN 25GUN	U Box	ø 20mm ø 20mm ø 25mm	10

Malleable Conduit Boxes



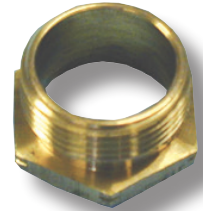
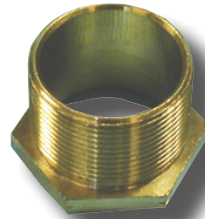
Part No BLACK / GALV	Description	Thread ø	Pk Qty
20BY 25BY 20GYN 25GYN	Y Box	ø 20mm ø 25mm ø 20mm ø 25mm	10
B20B1E B20G1E	Terminal tension Box	ø 20mm	10
B20G2E	Through Extension Box	ø 20mm	10
B20G3E	Tee Extension Box	ø 20mm	10
B20G5E	Angle Extension Box	ø 20mm	10
B20BT3 B20GT3	Tee Tangent Box	ø 20mm	10
B20GT5	Angle Tangent Box	ø 20mm	10

Malleable Conduit Boxes



Part No BLACK / GALV	Description	Thread ø	Pk Qty
B20GBO	Back Outlet Box	ø 20mm	10
B20G3BO	Tee Back Outlet Box	ø 20mm	10
B20B1BO B20G1BO	Terminal Back Outlet Box	ø 20mm	10
B20G2BO	Through Back Outlet Box	ø 20mm	10
1GLB 2GLB 3GLB 4GLB	Loop-In Box 1 hole 2 hole 3 hole 4 hole	ø 20mm	10 10 10 20

Bushes



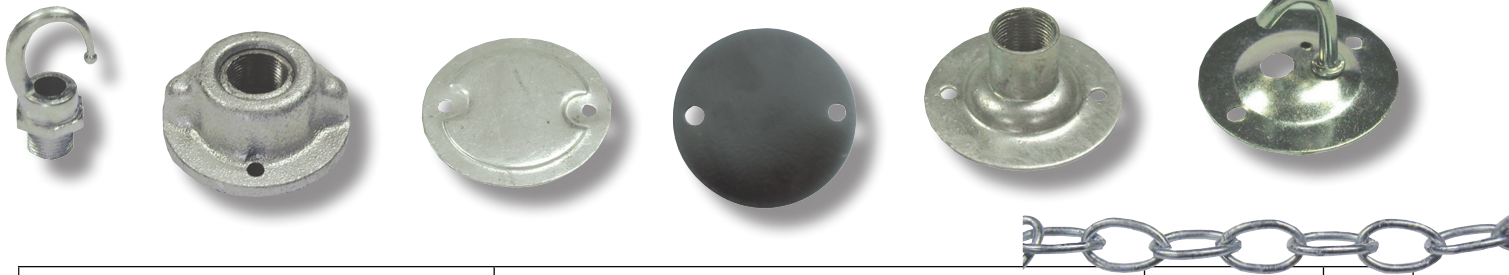
Part No BRASS	Description	Dimensions	Pk Qty
16FBB 20FBB 25FBB 32FBB 4FBB 5FBB	Female Brass Bushes	ø 16mm ø 20mm ø 25mm ø 32mm ø 1.5" ø 2"	100 100 100 100 100 25
20MBBL 25MBBL 32MBBL 4MBBL 5MBBL	Male Long Brass Bushes	ø 20mm ø 25mm ø 32mm ø 1.5" ø 2"	100 100 50 20 10
16MBBS 20MBBS 25MBBS 32MBBS 4MBBS 5MBBS	Male Short Brass Bushes	ø 16mm ø 20mm ø 25mm ø 32mm ø 1.5" ø 2"	100 100 100 50 50 25

Saddles



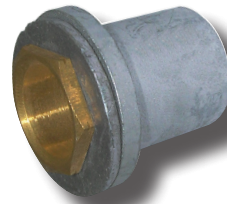
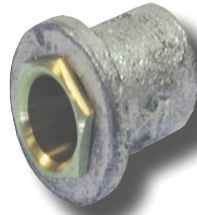
Part No BLACK / GALV	Description	Dimensions For conduit of	Pk Qty
20GPS 25GPS	Plain Saddles (Pressed Steel)	ø 20mm ø 25mm	100
20BSBS 25BSBS 20GSBS 25GSBS 32GSBS	Spacer Bar Saddles (Pressed Steel)	ø 20mm ø 25mm ø 20mm ø 25mm ø 32mm	100 100 100 100 50
20BDS 25BDS 32BDS 20GDS 25GDS 32GDS	Distance Saddles (Malleable)	ø 20mm ø 25mm ø 32mm ø 20mm ø 25mm ø 32mm	50 50 25 50 25 25
20BHS 20GHS 25GHS	Hospital Saddles (Malleable)	ø 20mm ø 20mm ø 25mm	25 25 20
20WSBS 25WSBS	Spacer Bar Saddles Pressed Steel	ø 20mm ø 25mm	 100

Covers, Hooks, Plates & Chain



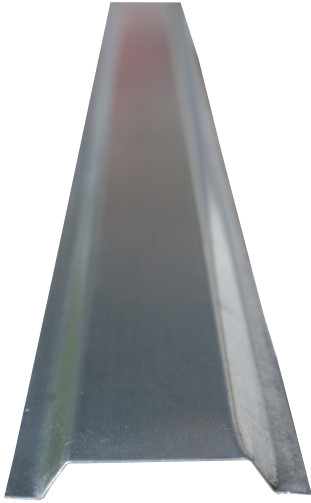
Part No BLACK / GALV	Description	Dimensions Thread	Pk Qty
20BMH 20GMH	Male Hooks	ø 20mm	25
20BBS 20GBS	Ball & Socket	ø 20mm	20
BLPC GLPC	Recessed Covers Light Gauge	Suitable for ø 20mm & ø 25mm	100
BLPCF GLPCF	Flat Covers Light Gauge	Suitable for ø 20mm & ø 25mm	100
20BDC 20GDC 25GDCM	Dome Covers	ø 20mm ø 20mm ø 25mm	50 50 20
BHP GHP	Hook Plates Load rating: 25kg	Suitable for ø 20mm & ø 25mm	25
CRG	Cover Gasket Circular Rubber	Suitable for ø 20mm & ø 25mm	100
BJC	Jack Chain 10M Hank Max working load 7.5kg	No 10	1 x 10M Hank
GJC			
8GJC	Jack chain 10M Hank Max working load 15kg	No 8	
SBJC	Jack chain 10M Hank Max working load 40kg	No 10	
SGJC			

Couplers



Part No BLACK /GALV	Description	Dimensions Thread	Pk Qty
20GEC	Earth Coupler	ø 20mm	100
20BFC	Flanged Couplers (Malleable)	ø 20mm	50
20GFC		ø 20mm	30
25GFC		ø 25mm	20
20GFCS	Flanged Couplers (Steel)	ø 20mm	25
25GFCS		ø 25mm	
20BC	Plain Couplers	ø 20mm	100
25BC		ø 25mm	50
32BC		ø 32mm	40
4BC		ø 1.5"	30
5BC		ø 2"	10
20GC		ø 20mm	100
25GC		ø 25mm	50
32GC		ø 32mm	40
4GC		ø 1.5"	30
5GC		ø 2"	10

Steel Channel & Lockrings



Part No	Description	Dimensions	Pk Qty
GC12	Galvanised Steel Channel in 2M lengths Gauge 0.40mm	W12mm	50
GC25		W25mm	50
GC37		W37mm	50
GC50		W48mm	25
GC63		W63mm	25

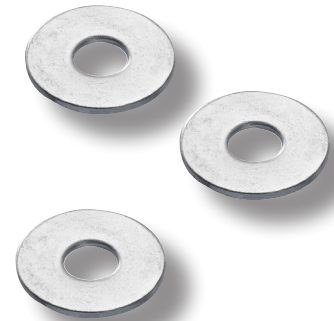
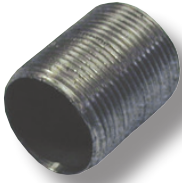
Part No BZP / SC	Description	Dimensions Thread	Pk Qty
20PME	Milled Edge Lockrings	ø 20mm	100
25PME		ø 25mm	100
32PME		ø 32mm	100
4PME		ø 1.5"	50
5PME		ø 2"	50
20SCME		ø 20mm	100
25SCME		ø 25mm	100
32SCME		ø 32mm	100
4SCME		ø 1.5"	50
5SCME		ø 2"	50

Adaptors & Reducers



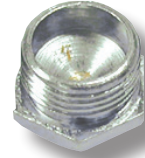
Part No BLACK / GALV	Description	Thread ø	Pk Qty
20MGA	Adaptor 20mm Male x 3/4" Female	ø 20mm	100
34MGA	Adaptor 3/4" Male x 20mm Female	ø 20mm	25
2016BR 2520BR 2016GR 2520GR 3220GR 3225GR 420GR 425GR 432GR 525GR 532GR 54GR	Reducers	ø 20 - 16mm ø 25 - 20mm ø 20 - 16mm ø 25 - 20mm ø 32 - 20mm ø 32 - 25mm ø 1.5" - 20mm ø 1.5" - 25mm ø 1.5" - 32mm ø 2" - 25mm ø 2" - 32mm ø 2" - 1.5"	100 50 100 50 25 25 20 20 20 10 10 10

Nipples



Part No BZP / SC	Description	Dimensions Thread	Pk Qty
20PN 25PN 20SCN 25SCN 32SCN	Nipples	\varnothing 20mm \varnothing 25mm \varnothing 20mm \varnothing 25mm \varnothing 32mm	100 100 100 100 50
20BN	Bonding Nipples (Die Cast Zinc Alloy)	\varnothing 20mm	100
20SCW	Serrated washer	\varnothing 20mm	250
25SCW	Bright Zinc Plated	\varnothing 25mm	
M1025PW M1030PW M620PW M625PW M820PW M825PW	Steel Penny Washers Bright Zinc Plated	M10 x 25mm M10 x 30mm M6 x 20mm M6 x 25mm M8 x 20mm M8 x 25mm	100

Extension Rings & Plugs



Part No BLACK / GALV	Description	Thread ø DEPTH	Pk Qty
16BER	Extension Rings	16mm	50
20BER		20mm	20
25BER		25mm	20
10GER		10mm	50
13GER		13mm	50
16GER		16mm	50
20GER		20mm	20
25GER		25mm	20
32GER		32mm	20
40GER		40mm	10
50GER		50mm	10

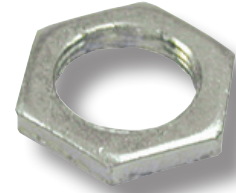
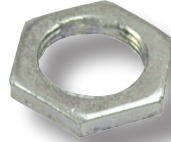
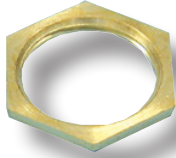
Part No	Description	Dimensions Thread	Pk Qty
BRASS	Slotted Plugs Brass	ø 20mm	100
20BRSP		ø 25mm	
GALV	Hexagonal Plugs	ø 20mm	50
20GHP		ø 25mm	50
25GHP			

Elbows, Bends & Tees



Part No BLACK / GALV	Description	Thread ø	Pk Qty
25BSB	Solid Bend	ø 20mm	1
20GSB		ø 25mm	
25GSB		ø 25mm	
20BIB	Inspection Bends	ø 20mm	1
25BIB		ø 25mm	
20GIB		ø 20mm	
25GIB		ø 25mm	
20BSE	Solid Elbow	ø 20mm	20
20GSE		ø 20mm	20
25GSE		ø 25mm	10
20BIE	Inspection Elbows	ø 20mm	20
25BIE		ø 25mm	20
20GIE		ø 20mm	20
25GIE		ø 25mm	10
20GST	Solid Tees	ø 20mm	20
20BIT	Inspection Tees	ø 20mm	20
20GIT		ø 20mm	20
25GIT		ø 25mm	10

Locknut - hex



Part No	Description	Thread ø	Pk Qty
20BRLN 25BRLN 32BRLN	Brass Locknuts	ø 20mm ø 25mm ø 32mm	100 100 50
20GHN 25GHN	Steel Heavy Gauge Locknuts	ø 20mm ø 25mm	100
16BLN 20BLN 25BLN 32BLN 5BLN 16GLN 20GLN 25GLN 32GLN 40GLN 50GLN 4GLN 5GLN	Steel Light Gauge Locknuts	ø 16mm ø 20mm ø 25mm ø 32mm ø 2" ø 16mm ø 20mm ø 25mm ø 32mm ø 40mm ø 50mm ø 1.5" ø 2"	100 100 100 100 100 100 100 100 50 50 50 50 50

Cable Gland Kits



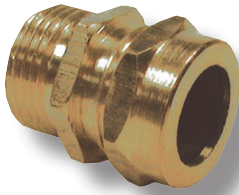
Part No	Description	Thread ø	Contents
20SBWK	BW type Cable Gland Kit	ø 20mm (small)	2 x glands
20BWK		ø 20mm	2 x shrouds
25BWK		ø 25mm	2 x tags
32BWK		ø 32mm	2 x locknuts
40BWK	Two Part Glands (indoors)	ø 40mm	1 x gland
50BWK		ø 50mm	1 x shroud
63BWK		ø 63mm	1 x tag
75BWK		ø 75mm	1 x locknut
20SCWK	CW type Cable Gland Kit	ø 20mm (small)	2 x glands
20CWK		ø 20mm	2 x shrouds
25CWK		ø 25mm	2 x tags
32CWK		ø 32mm	2 x locknuts
40CWK	Three Part Glands (outdoors)	ø 40mm	1 x gland
50CWK		ø 50mm	1 x shroud
63CWK		ø 63mm	1 x tag
			1 x locknut

Cable Gland Kits



Part No	Description	Thread ø	Contents
20SBWKLSF 20BWKLSF 25BWKLSF 32BWKLSF	BW type Cable Gland Kit Low smoke and fume Two Part Glands (indoors)	ø 20mm (small) ø 20mm ø 25mm ø 32mm	2 x glands 2 x shrouds 2 x tags 2 x locknuts
40BWKLSF 50BWKLSF 63BWKLSF 75BWKLSF		ø 40mm ø 50mm ø 63mm ø 75mm	1 x gland 1 x shroud 1 x tag 1 x locknut
20SCWKLSF 20CWKLSF 25CWKLSF 32CWKLSF	CW type Cable Gland Kit Low smoke and fume Three Part Glands (outdoors)	ø 20mm (small) ø 20mm ø 25mm ø 32mm	2 x glands 2 x shrouds 2 x tags 2 x locknuts
40CWKLSF 50CWKLSF 63CWKLSF 75CWKLSF		ø 40mm ø 50mm ø 63mm ø 75mm	1 x gland 1 x shroud 1 x tag 1 x locknut

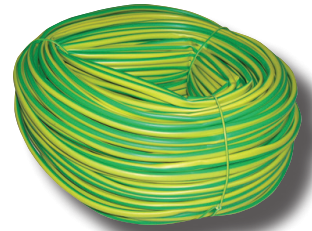
Cable Glands & Crampets



Part No	Description	Dimensions	Pk Qty
BRASS			
16TRS	Glands	Thread ø 16mm	100
20TRS	Brass TRS	ø 20mm	100
25TRS	stuffing	ø 25mm	50

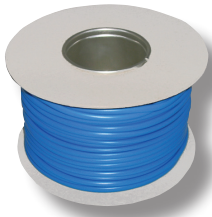
Part No BLACK / GALV	Description	Dimensions Conduit Size	Pk Qty
20BFCR		ø 20mm	
20GFCR	Flat	ø 20mm	
25BFCR	Crampets	ø 25mm	100
25GFCR		ø 25mm	

PVC Sleeving Hanks



Part No	Description	Dimensions
BLS3 BLS4 BLS5 BLS6 BLS8 BLS10 BLS12 BLS16	PVC Sleeving 100M Hank Blue	ø 3mm ø 4mm ø 5mm ø 6mm ø 8mm ø 10mm ø 12mm ø 16mm
BNS3 BNS4 BNS5 BNS6 BNS8 BNS10 BNS16	PVC Sleeving 100M Hank Brown	ø 3mm ø 4mm ø 5mm ø 6mm ø 8mm ø 10mm ø 16mm
WS3 WS4 WS6	PVC Sleeving 100M Hank White	ø 3mm ø 4mm ø 6mm
BS2 BS3 BS4 BS5 BS6 BS8 BS10 BS12	PVC Sleeving 100M Hank Black	ø 2mm ø 3mm ø 4mm ø 5mm ø 6mm ø 8mm ø 10mm ø 12mm
ES1 ES2 ES3 ES4 ES5 ES6 ES8 ES10 ES12 ES16	PVC Sleeving 100M Hank Green/Yellow	ø 1mm - 1.5mm ø 2mm ø 3mm ø 4mm ø 5mm ø 6mm ø 8mm ø 10mm ø 12mm ø 16mm
GRS3 GRS4 GRS6 GRS10	PVC Sleeving 100M Hank Grey	ø 3mm ø 4mm ø 6mm ø 10mm

PVC Sleeving Reels



Part No	Description	Dimensions
BLS3-R	PVC Sleeving 100M Reel	ø 3mm
BLS4-R	Blue	ø 4mm
BNS3-R	PVC Sleeving 100M Reel	ø 3mm
BNS4-R	Brown	ø 4mm
ES2-R	PVC Sleeving 100M Reel	ø 2mm
ES3-R	Green / Yellow	ø 3mm
ES4-R		ø 4mm
GRS3-R	PVC Sleeving 100M Reel	ø 3mm
GRS4-R	Grey	ø 4mm
TC3-R	PVC Sleeving 100M Reel Blue 20M, Grn / Yellow 60M, Brown 20M	ø 3mm

PVC Insulating Tape & Heatshrink Sleeving



Part No	Description	Colour	Pk Qty
IT1933B10 IT1933BL10 IP1933BN10 IT1933GY10 IT1933G10 IT1933R10 IT1933W10 IT1933Y10	Electrical Tape 33M length	Black Blue Brown Green/Yellow Grey Red White Yellow	10 x 33M rolls
IT1933RP7	Rainbow Pack	7 colours	7 x 33M rolls

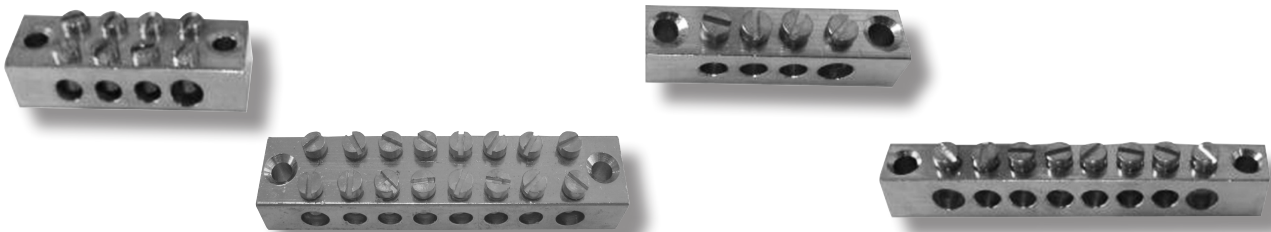
Part No	Description	Colour	Pk Qty
HSSMCP364 HSSMCP395 HSSMCP3127 HSSMCP2191 HSSMCP2254	6.4mm, 3 x 250mm lengths 9.5mm, 3 x 250mm lengths 12.7mm, 3 x 250mm lengths 19.1mm, 2 x 250mm lengths 25.4mm, 2 x 250mm lengths	5 Colours	1

Brass Full Nuts & Washers



Part No	Description	Finish	Dimensions	Pk Qty
2BAW	Washers	Brass	2BA	500
4W	Brass		4mm	
2BAN 3.5N 4N	Full Nuts Brass	Brass	2BA 3.5mm 4mm	500

Brass Earthing Blocks



Part No	Description	Terminal Hole Size	Pk Qty
4WEB	Brass Earthing Block with plating finish Double pole 4 way	1 x 25mm 3 x 16mm	20
8WEB	Brass Earthing Block with plating finish Double Pole 8 way	2 x 25mm 6 x 16mm	20
4WEBS	Brass Earthing Block with plating finish Single Pole 4 way	1 x 25mm 3 x 16mm	25
8WEBS	Brass Earthing Block with plating finish Single Pole 8 way	2 x 25mm 6 x 16mm	25

Connector Blocks



Part No	Description	Product Information	Pk Qty
CB1	100A 25mm ²	Single pole, 5 way 132g, H64 x W47 x D38mm	20
CB3	100A 35mm ²	Single pole, 5 way 188g, H64 x W47 x D38mm	20
CB2	100A 25mm ²	Double pole, 2 x 5 way 290g, H89 x W65 x D55mm	10
CB6	100A 35mm ²	Double pole 2 x 5 way 493g, H104 x W66 x D67mm	10
CB9	200A 70mm ²	Single pole, 6 way 585g, H125 x W64 x D55mm	1
CB35S	100A 25mm ²	Single pole, 1 x 5 way 132g H64.5 x W47 x D37mm	20
CB35D	100A 35mm ²	Double pole, 2 x 5 way 188g H103.7 x W68.6 x D68mm	10

	Weight (g)	H (mm)	W (mm)	D (mm)
CB1	132	64	47	38
CB2	290	89	65	55
CB3	188	64	47	38
CB6	493	104	66	67
CB9	585	125	64	55

Junction Boxes



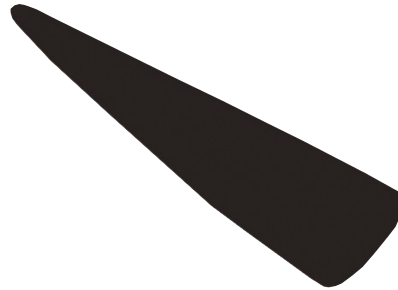
Part No	Description	Product Information	Pk Qty
GB2299	Mini Junction Box 20A	2 x 1.5mm ² 49g ø58mm	10
GB2620 GB2620B	Standard Junction Box 5A	2 x 1.5mm ² 49g ø60mm	10
GB2621	Standard Junction Box 20A	3 x 1.5mm ² 78g ø75mm	10
GB2622	Standard Junction Box 30A	3 x 2.5mm ² 85g ø75mm	10
GB2618 GB2618B	HD Junction Box 20A	4 x 1.5mm ² 145g ø90mm	10
GB2298 GB2298B	HD Junction Box 20A	4 x 1.5mm ² 170g ø90mm	10

Cable Jointing Kits, Cable Clamps & Cleats



Part No	Description	Thread ø	Pk Qty
NP3	Cable Cleats	ø 7.6mm	w100
NP4		ø 10.2mm	100
NP5		ø 12.7mm	100
NP6		ø 15.2mm	100
NP7		ø 17.8mm	100
NP8		ø 20.3mm	100
NP9		ø 22.8mm	100
NP10		ø 25.4mm	100
NP11		ø 27.7mm	50
NP12		ø 30.4mm	50
NP14		ø 35.6mm	50
NP16		ø 40.6mm	50
NP18		ø 45.7mm	20
NP20		ø 50.8mm	50

Brass Earth Tags



Part No	Description	Terminal Hole Size	Pk Qty
20ET	Earth Tags - Brass	ø 20mm	100
25ET		ø 25mm	100
20BS	PVC Black Tapered Shroud 20mm	-	10

Surface Boxes PVC



Part No	Description	Mini Trunking K/O Dimensions & Qty	∅ 20mm Conduit K/O Qty	Pk Qty
RC1	1 Gang, 32mm deep Round corners	H25 x W15mm Qty 1	1	20
RC1E	Economy off White			
RC2	2 Gang, 32mm deep Round corners	H25 x W15mm Qty 3	3	10
RC2E	Economy off White			
SC1	1 Gang, 32mm deep Square corners	H25 x W15mm Qty 1	1	20
SC1E	Economy off White			
SC2	2 Gang, 32mm deep Square corners	H25 x W15mm Qty 3	3	10
SC2E	Economy off White			

Channel PVC & Conduit PVC



Part No	Description	Dimensions	Pk Qty
CH05	High Impact PVC Channel	ø 13mm x L2M	100M
CH10		ø 26mm x L2M	
CH15		ø 39mm x L2M	

Part No WHITE / BLACK	Description	Dimensions	Pk Qty
HC20W	Heavy gauge Circular PVC Conduit Tube	ø 20mm x L3M	90M
HC25W		ø 25mm x L3M	
HC20B		ø 20mm x L3M	
HC25B		ø 25mm x L3M	
LC20	Light gauge Circular PVC Conduit Tube	ø 20mm x L3M	90M
LC25		ø 25mm x L3M	90M
OC05	Oval PVC Conduit Tube	ø 13mm x L3M	150M
OC06		ø 16mm x L3M	
OC07		ø 20mm x L3M	
OC10		ø 26mm x L3M	

Conduit Fittings & Accessories



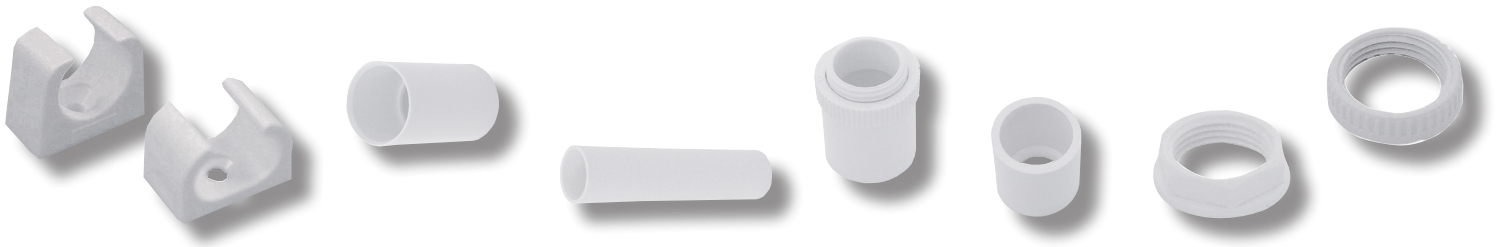
Part No WHITE / BLACK	Description	Dimensions	Pk Qty
P1WAY20W P1WAY25W P1WAY20B P1WAY25B	Terminal Box	ø 20mm ø 25mm ø 20mm ø 25mm	20
P2WAY20W P2WAY25W P2WAY20B P2WAY25B	Through Box	ø 20mm ø 25mm ø 20mm ø 25mm	
PANGLE20W PANGLE25W PANGLE20B PANGLE25B	Angle Box	ø 20mm ø 25mm ø 20mm ø 25mm	
P3WAY20W P3WAY25W P3WAY20B P3WAY25B	Tee Box	ø 20mm ø 25mm ø 20mm ø 25mm	
P4WAY20W P4WAY25W P4WAY20B P4WAY25B	4 Way Box	ø 20mm ø 25mm ø 20mm ø 25mm	

Conduit Fittings & Accessories



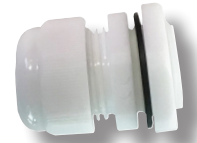
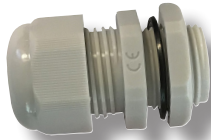
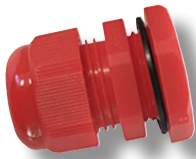
Part No WHITE / BLACK	Description	Dimensions	Pk Qty
PLOOPW PLOOPB	Loop-in Box	ø 20mm	20
PCCW PCCB	Circular Covers	ø 65mm	100
PSTB20W PSTB25W PSTB20B PSTB25B	Slip Bends	ø 20mm ø 25mm ø 20mm ø 25mm	20 10 25 20
PIB20W PIB25W PIB20B PIB25B	Inspection Bends	ø 20mm ø 25mm ø 20mm	20
PIE20W PIE20B	Inspection El- bows	ø 20mm	20
PIT20W PIT25W PIT20B PIT25B	Inspection Tees	ø 20mm ø 25mm ø 20mm ø 25mm	20
PMB20W PMB25W PMB20B	Male Bushes	ø 20mm ø 25mm ø 20mm	100
PSB20W PSB20B PSB25B	Spacer Bar Saddles	ø 20mm ø 20mm ø 25mm	100 100 50

Conduit Fittings & Accessories



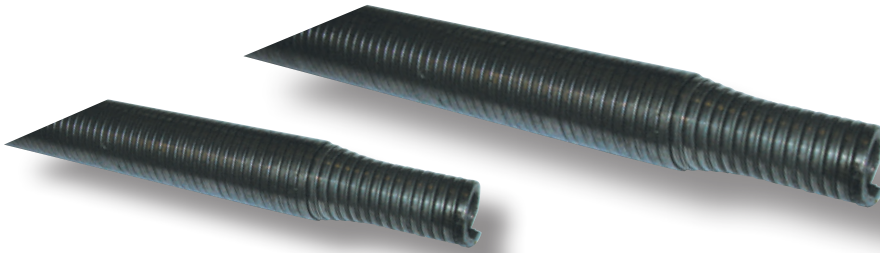
Part No WHITE / BLACK	Description	Dimensions	Pk Qty
PRCC20W PRCC25W PRCC20B PRCC25B	Round Conduit Clips	∅ 20mm ∅ 25mm ∅ 20mm ∅ 25mm	200 50 200 100
POCC16W POCC20W POCC25W	Oval Conduit Clips	∅ 16mm ∅ 20mm ∅ 25mm	100
PC20W PC25W PC20B PC25B	Straight Couplers	∅ 20mm ∅ 25mm ∅ 20mm ∅ 25mm	100 50 100 50
PEC20W PEC20B	Expansion Couplers	∅ 20mm ∅ 20mm	50 50
PMA20W PMA25W PMA20B PMA25B	Male Adaptors	∅ 20mm ∅ 25mm ∅ 20mm ∅ 25mm	100 50 100 100
PFA20W PFA25W PFA20B PFA25B	Female Adaptors	∅ 20mm ∅ 25mm ∅ 20mm ∅ 25mm	100 50 100 50
PR2520W PR2520B	Reducer	∅ 25 x 20	100
PLN20W PLN20B PLN25B	Hexagonal Locknuts	∅ 20 ∅ 25	100
PLR20W PLR25W	Lockrings	∅ 20 ∅ 25	200 200

PVC Cable Glands



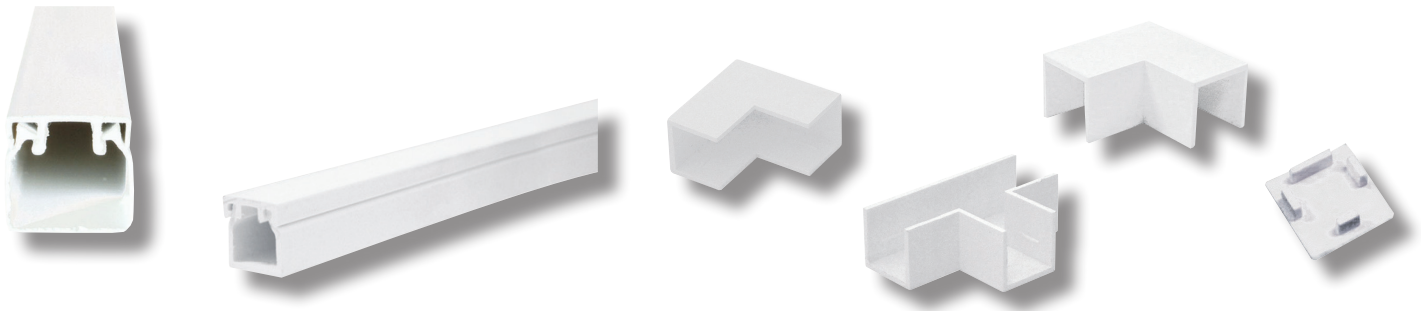
Part No	Description	Colour	Pk Qty
DTG20BS DTG20GS DTG20RS DTG20WS	IP68 20mm (small) Cable Range 3 - 7mm	Black Grey Red White	10
DTG20BL DTG20GL DTG20RL DTG20WL	IP68 20mm (long) Cable Range 10 - 14mm	Black Grey Red White	10
DTG25B DTG25G DTG25R DTG25W	IP68 25mm Cable Range 13 - 18mm	Black Grey Red White	10
DTG32B DTG32G DTG32W	IP68 32mm Cable Range 18 - 25mm	Black Grey White	10

Bending Springs & PVC Adhesive



Part No	Description	Product Information	Pk Qty
20BSH 25BSH 32BSH 38BSH	Heavy gauge Bending Springs (Green)	ø 20mm ø 25mm ø 32mm ø 38mm	1
20BSL 25BSL	Light gauge Bending Springs (Red)	ø 20mm ø 25mm	1

Mini Trunk PVC



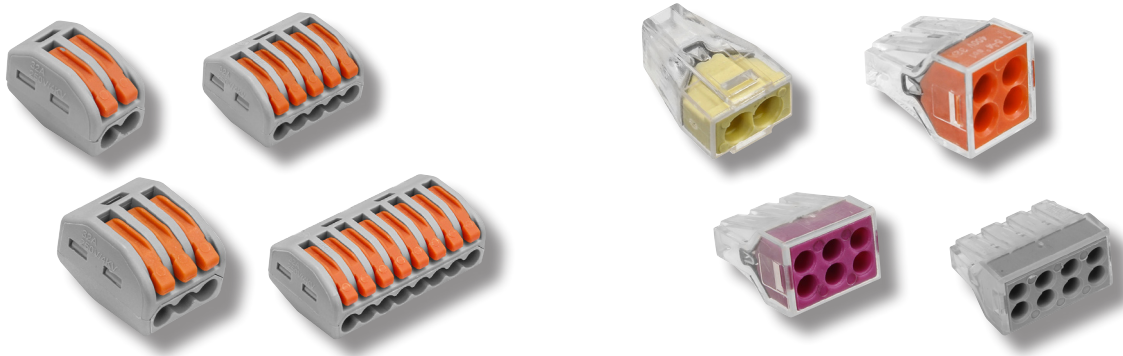
Part No	Description	Dimensions	Pk Qty
NMT1 NMT2 NMT3 NMT4 NMT5	Mini Trunking High impact PVC	H16mm x W16mm H16mm x W25mm H16mm x W40mm H25mm x W40mm H25mm x W50mm	75M 75M 30M 30M 30M
SAMT1 SAMT2	Mini Trunking High impact PVC Self adhesive	Trunking dimensions H16mm x W16mm H16mm x W25mm	75M
EA1 EA2	External Angle	H16mm x D16mm H16mm x D25mm	10
FA1 FA2	Flat Angle	H16mm x D16mm H16mm x D25mm	10
IA1 IA2	Internal Angle	H16mm x D16mm H16mm x D25mm	10
FT1 FT2	Flat Tee	H16mm x D16mm H16mm x D25mm	10
C1 C2	Coupling	H16mm x D16mm H16mm x D25mm	10
SE1 SE2	Stop End	H16mm x D16mm H16mm x D25mm	10

Conduit Kit PVC



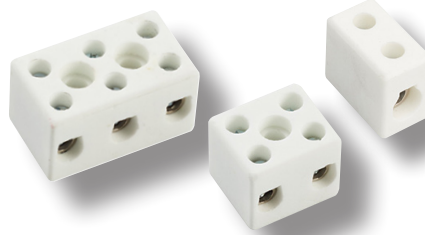
Part No	Description	Product Information	Pk Qty
20CK 25CK	PVC Flexible Conduit Contractor Pack	Pack contains - 10M of flexible conduit x 10 nylon swivel fittings x 10 nylon locknuts	10M conduit
20CKG 25CKG	Spare glands for contractor pack	ø 20mm ø 25mm	10

Lever & Push Fit Connectors



Part No	Description	Current	Pk Qty
LC2P	2 Pole Lever Connector 230V	32A	100
LC3P	3 Pole Lever Connector 230V		
LC5P	5 Pole Lever Connector 230V		50
LC8P	8 Pole Lever Connector 230V		
PFC2	2 Push-Fit Connector 250V	24A	100
PFC4	4 Push-Fit Connector 250V		
PFC6	6 Push-Fit Connector 250V		
PFC8	8 Push-Fit Connector 250V		

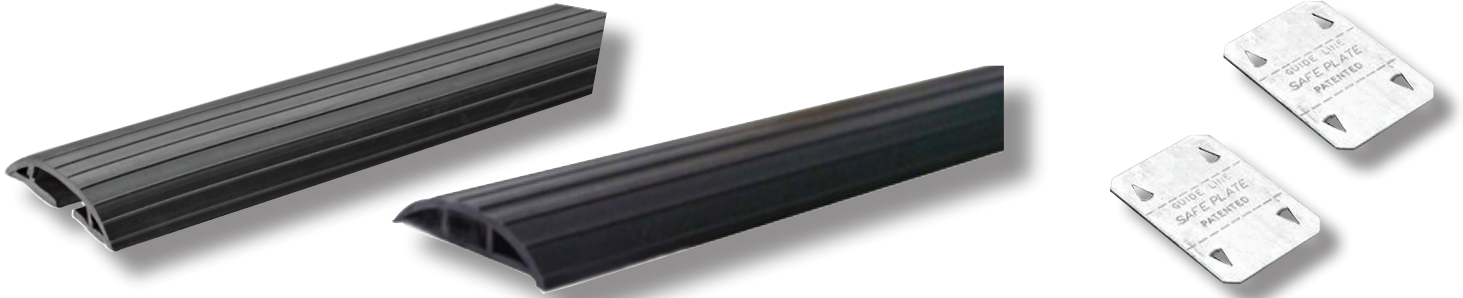
Connector - Porcelain & Fuses



Part No	Description	Poles	Fix Holes mm	Dimensions	Pk Qty
PC51	5A Porcelain Connectors	1	0	H15 x W18 x L11mm	25
PCC52		2	1 x 4	H15 x W18 x L23mm	25
PCC53		3	2 x 4	H15 x W18 x L33mm	10
PCC152	15A Porcelain Connectors	2	1 x 5	H15 x W23 x L26mm	20
PCC153		3	2 x 5	H15 x W23 x L40mm	10
PC301	30A Porcelain Connectors	1	0	H19 x W26 x L16mm	20
PCC302		2	1 x 4	H19 x W26 x L32mm	10
PCC303		3	2 x 4	H19 x W26 x L47mm	10

Part No	Description	Dimensions	Pk Qty
2AF 3AF 5AF 7AF 10AF 13AF	Cartridge Fuses with ceramic body 1" long Conforms to BS 1362	2A 3A 5A 7A 10A 13A	100

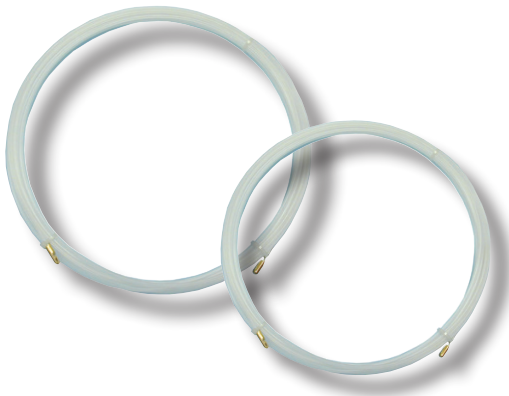
Cable Protectors



Part No	Description	Product Information
CPS	Cable Protector small PVC	H11mm x W64mm x L9M Internal cavity: H6.4 x W16mm Ribbed surface Slit back
CPM	Cable Protector Medium PVC	H16mm x W76mm x L9M Internal cavity: H9.5 x 19mm Ribbed surface Slit back
CPL	Cable Protector Large PVC	H25mm x W76mm x L9M Internal cavity: H16 x W38mm Ribbed surface Slit back

Part No	Description	Dimensions	Pk Qty
SP1	Safeplate	50 x 76mm	100

Draw-in Tapes & Connector Strips



Part No	Description	Length	Pk Qty
10NDT 20NDT 30NDT	Draw-in Tapes, Nylon, 3mm	10M 20M 30M	1

Part No	Description	Amps	Pk Qty
2SC 5SC 10SC 15SC 30SC 60SC	Polyethylene 12 way Strip Connectors Clear	3A 5A 10A 15A 30A 60A	10
NYC5 NYC15 NYC30	Nylon 12 way Strip Connectors Black	5A 15A 30A	