

# New DRY LINING BOXES with pivoting lugs



DL1N



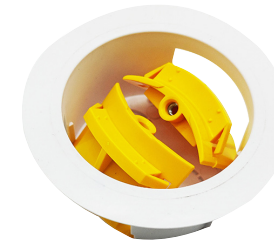
DL2N



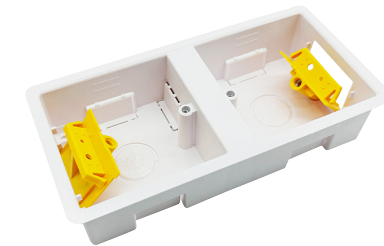
DL147N



DL247N



DLCN



DLDN

## TECHNICAL INFO

Product Code	DL1N	DL2N	DL147N	DL247N	DLCN	DLDN
<b>Description</b>	1 Gang - 35mm Deep	2 Gang - 35mm Deep	1 Gang - 47mm Deep	2 Gang - 47mm Deep	1 Gang Circular - 32mm Deep	Dual Box - 35mm Deep
<b>Pack Qty</b>	10					
<b>Max Wall/Plasterboard Thickness</b>	16mm		30mm		20mm	
<b>Product Finish</b>	White Polycarbonate					
<b>Barcode</b>	5012739 644931	5012739 644948	5012739 644955	5012739 644962	5012739 644979	5012739 644986
<b>Product Weight</b>	47g	73g	57g	89g	37g	91g
<b>K/O Dimensions</b>	1 x ø25mm				2 x ø20mm	2 x ø25mm
<b>Cut Out</b>	73.5 x 73.5 mm	134 x 73.5 mm	73.5 x 73.5 mm	134 x 73.5 mm	66mm	158 x 73.5mm
<b>Box Lip Dimensions</b>	1.2mm					
<b>Cable Entry Dimensions</b>	2 x 16mm x 25mm				n/a	4 x 16mm x 26mm
<b>Guarantee</b>	1 Year					
<b>Conforms To</b>	BS 60670					

The Greenbrook dry lining lugs are designed to sit flush within the gap in the running bar.

- This keeps the threaded fixing hole central and consistent
- Ensures better alignment with the product's fixing holes

### Benefits:

- Screws engage more easily without forcing alignment
- Accessory sits square on the first attempt, reducing adjustment time
- Minimizes risk of cross-threading or uneven tightening

### Overall:

- Improves installation accuracy
- Delivers a cleaner, more professional finish with less effort