

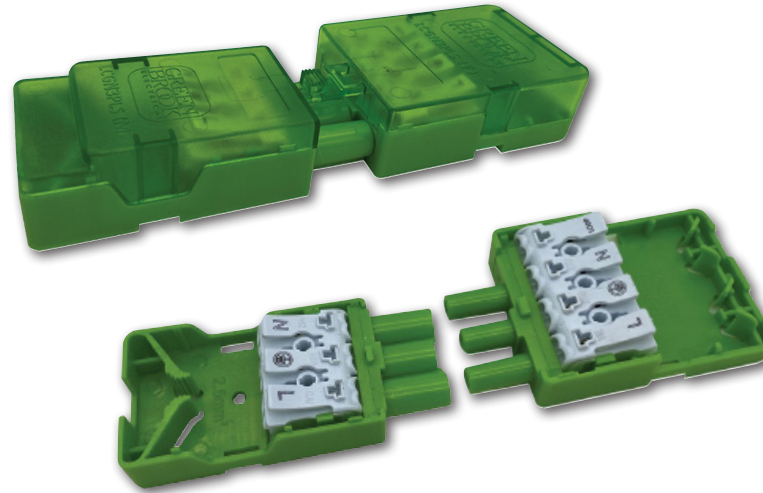
# 20Amp Lighting Connectors

## - with Quick Click Push-Fit Terminals

### QUICK Connekt+3

#### FEATURES

- ▶ IP20
- ▶ 250V / 20Amp Plug-in Connector
- ▶ Easy lock and release system
- ▶ Push-fit cord grips
- ▶ Large terminal for easy access
- ▶ Designed and manufactured by GreenBrook

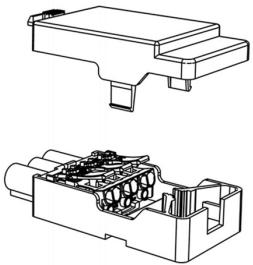


#### TECHNICAL INFO

Product	LCGN3PLS
Max Voltage	250V / 20Amp
Barcode	5012739647567
Male Connector	1 x 25mm <sup>2</sup> 3 Core flex, screw cord grip
Female Connector	2 x 2.5mm <sup>2</sup> Twin & Earth, loop terminal
Housing Material	Nylon 66 (PA66)
Product Finish	Polypropylene enclosures, Nylon connector
IP Rating	IP20
Terminal Material	Solid Ni Plated Brass
Box Qty	50
Dimensions	L142.5 x W45.5 x H21.6mm
Product Weight	68.5g
Guarantee	1 Year
Conforms To	EN 61535

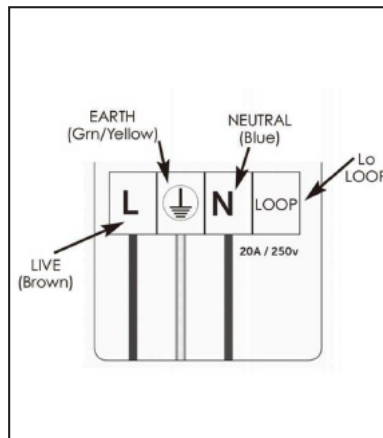
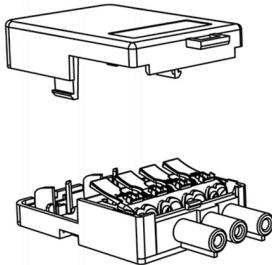
#### Male Plug

Upto 1 x 2.5mm<sup>2</sup> 3 core can be used.



#### Female Socket

Upto 2 x 2.5mm<sup>2</sup> Twin & Earth can be used.



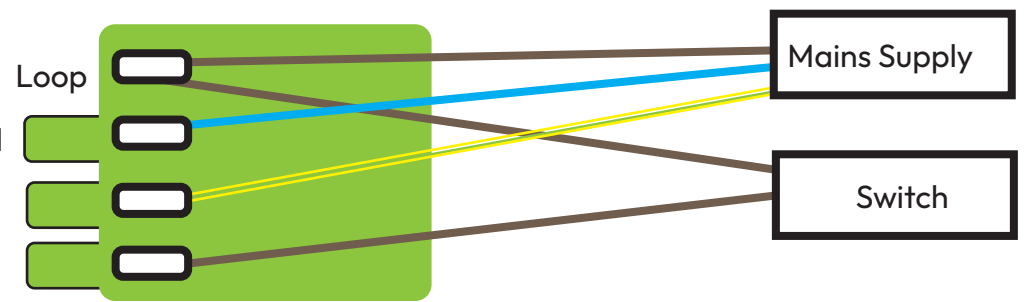
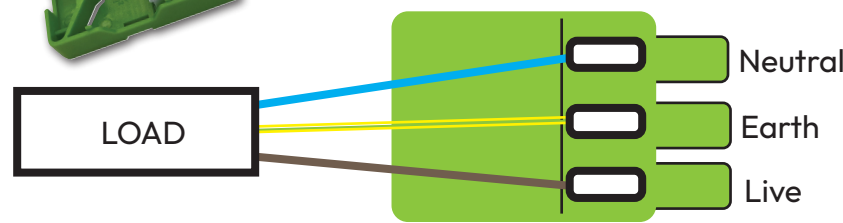
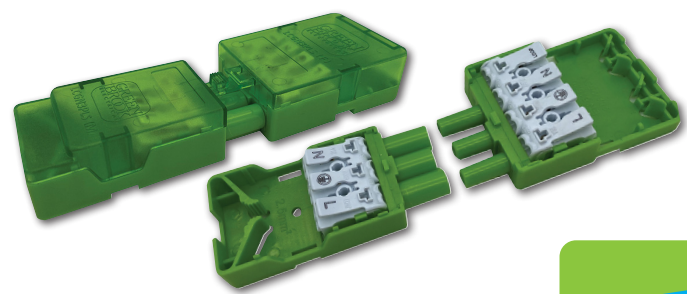
Also available Quick Connect 4+ - Part code LCGN4PLS  
Visit [www.greenbrook.co.uk](http://www.greenbrook.co.uk)

TECHNICAL WIRING INFORMATION

## QUICK ConneKt+3

- 20A Lighting Connector - for 3 core Flex  
Wiring Diagram

### LCGN3PLS - Wiring (Quick push-fit Terminals)



Load (Male) - Pins

Supply (Female) - Socket

1 x cable entry  
Each Terminal can be fitted  
with upto 2 x 2.5mm<sup>2</sup>

2 x cable entries  
Each Press Fit Terminal  
can be fitted with  
upto 2 x 2.5mm<sup>2</sup>

