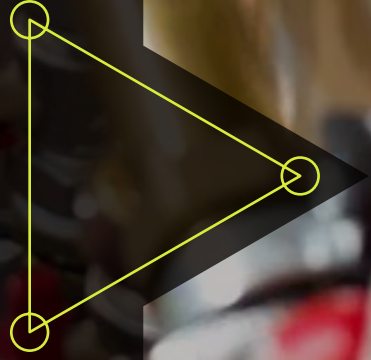




**HEATING**



# Tubular Heaters

Our Tubular Heaters and Guards are designed for wall mounting - Ideal for use in all types of outbuildings.

- ✓ **Wall fixings included, cable length 1M**
- ✓ **Instant start**
- ✓ **Guards available to fit all heaters**
- ✓ **Heater fitted with internal thermal cut-out to prevent overheating, will reset as unit cools**
- ✓ **1 Year Guarantee**



**TUBH1  
60W**

Can connect up to 1000W  
1ft  
L308mm x 55.4mm

**TUBH2  
120W**

Can connect up to 1000W  
2ft  
L612mm x 55.4mm

**TUBH3  
180W**

Can connect up to 1000W  
3ft  
L904mm x 55.4mm

**TUBH4  
240W**

Can connect up to 1000W  
4ft  
L1221mm x 55.4mm

**TUBH5  
300W**

Can connect up to 1000W  
5ft  
L1519mm x 55.4mm

**TUBH6  
360W**

Can connect up to 1000W  
6ft  
L1823mm x 55.4mm

# Tubular Guards

Our single Tubular Guards are designed to protect against the heating surface of GreenBrook's Tubular Heaters in environments with young children, elderly people or pets.

- ✓ **Easy to install**
- ✓ **Powder coated, steel construction**
- ✓ **1 Year Guarantee**



**TUBG11NN**

**Tubular Guard to fit TUBH1TH & TUBH1**

1ft  
L400mm x 190mm  
(including fixing holes)

**TUBG31NN**

**Tubular Guard to fit TUBH3TH & TUBH3**

3ft  
L1000mm x 190mm  
(including fixing holes)

**TUBG51NN**

**Tubular Guard to fit TUBH5TH & TUBH5**

5ft  
L1600mm x 190mm  
(including fixing holes)

**TUBG21NN**

**Tubular Guard to fit TUBH2TH & TUBH2**

2ft  
L700mm x 190mm  
(including fixing holes)

**TUBG41NN**

**Tubular Guard to fit TUBH4TH & TUBH4**

4ft  
L1300mm x 190mm  
(including fixing holes)

**TUBG61NN**

**Tubular Guard to fit TUBH6TH & TUBH6**

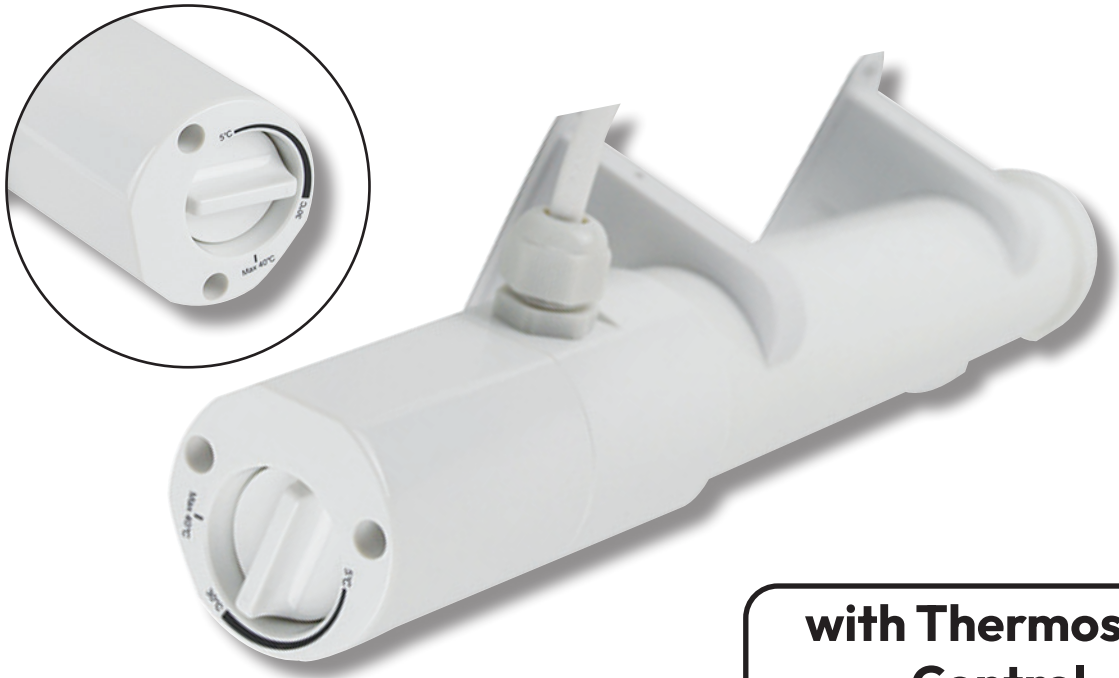
6ft  
L1900mm x 190mm  
(including fixing holes)

# Tubular Heaters with Thermostats

Our Tubular Heaters and Guards are designed for wall mounting - Ideal for use in all types of outbuildings. The Thermostat range has built-in adjustable thermostat with a range from 5°C to 40°C.

- ✓ **Wall fixings included, cable length 1M**
- ✓ **Heater fitted with internal thermal cut-out to prevent overheating, will reset as unit cools**
- ✓ **Guards available to fit all heaters**
- ✓ **Wide choice of sizes available - 1ft to 6ft**
- ✓ **1 Year Guarantee**

TECHNICAL INFORMATION	
Voltage	230V AC ~ 50Hz
IP Rating	IP44
Conforms to	BS EN 60335



**with Thermostat Control**

**TUBH1TH**  
**60W With Thermostat**  
 1ft  
 L364mm x 55.4mm

**TUBH4TH**  
**240W With Thermostat**  
 4ft  
 L1276mm x 55.4mm

**TUBH2TH**  
**120W With Thermostat**  
 2ft  
 L667mm x 55.4mm

**TUBH5TH**  
**300W With Thermostat**  
 5ft  
 L1574mm x 55.4mm

**TUBH3TH**  
**180W With Thermostat**  
 3ft  
 L959mm x 55.4mm

**TUBH6TH**  
**360W With Thermostat**  
 6ft  
 L1878mm x 55.4mm



**TUBHUB**  
**Thermostat Brackets**

# Air Curtain

The Air Curtain unit is designed for easy installation and can be wall or ceiling mounted. Featuring three air settings: fan only, warm air (1500W) or hot air (3000W), it also includes a mounting bracket so angle can be adjusted.

This unit is ideal for providing a heated air curtain if mounted over doorways and reduces draughts and the discomfort of cold air when doors are opened.

- ✓ **Fan only / 1500W / 3000W Settings**
- ✓ **Wall or ceiling mounted**
- ✓ **Overheat protection**
- ✓ **Metal case**
- ✓ **Mounting bracket included**
- ✓ **1 Year Guarantee**

TECHNICAL INFORMATION	
<b>Voltage</b>	230 - 240V AC ~ 50Hz
<b>Class</b>	1
<b>Conforms to</b>	EN 60335-2-30, EN 60335-1 & EN 62233



## AC3000N - Air Curtain

Two Heat Settings 1.5kW - 3kW  
L580 x W205.5 x H104.5mm

Featuring three air settings:  
fan only, warm air (1500W)  
or hot air (3000W)

