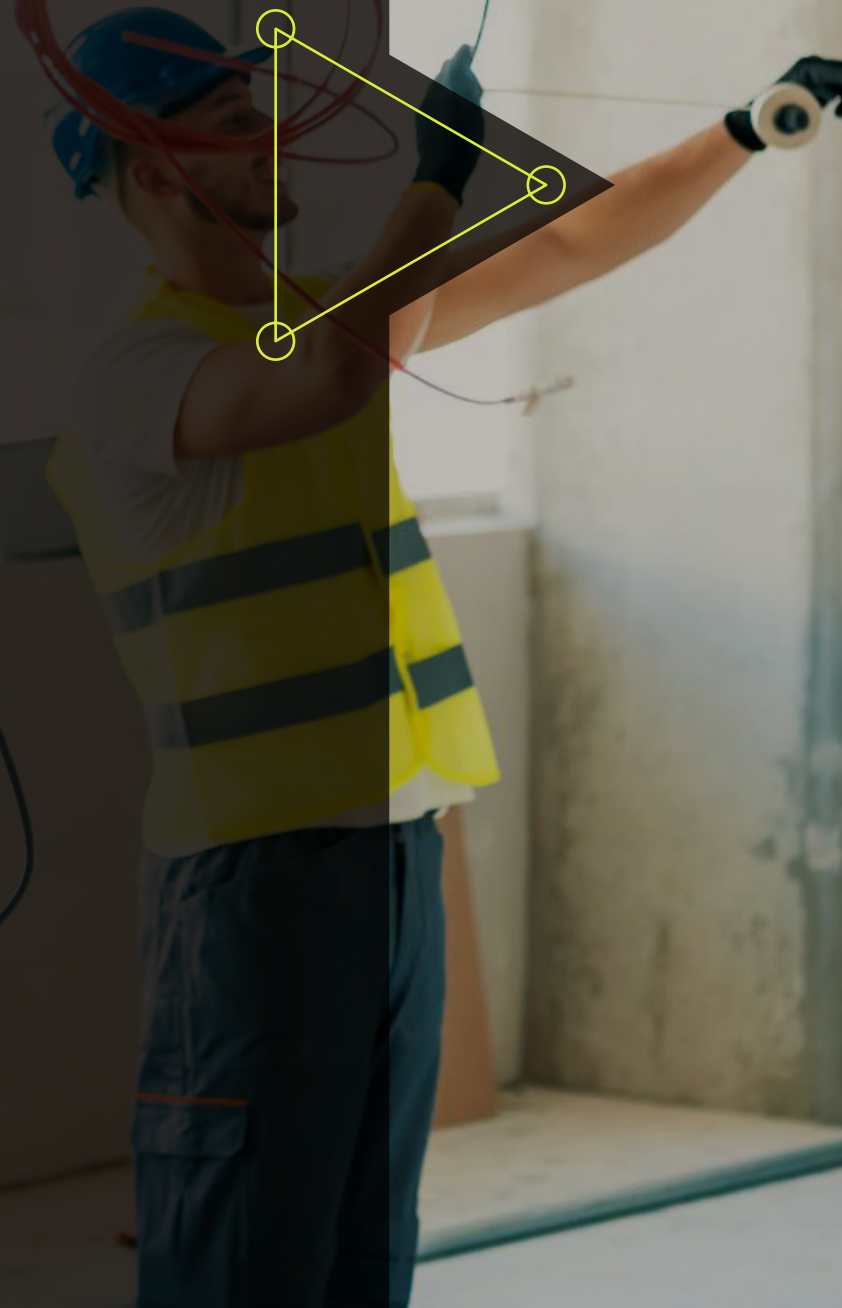




SUPER ROD



Rod Kits

The Mega Set, with over 16M (52ft) of length gives you 5 different flexibility choices, making this product a very popular choice. This, combined with the extensive range of attachments, is an essential kit for anyone working with wire and cable.



Part No	Description	Product Information
CRMX	Mega Set	6 x 5mm Red Adoxim 1M Rods, 3 x 4mm Yellow Adoxim 1M Rods 3 x 6mm Black Adoxim 1M Rods, 5mm Nylon 1M Rod 5mm Glo Adoxim Swivel 1M Rod, 5mm Red Adoxim Swivel 1M Rod 4mm Yellow Adoxim Swivel 1M Rod, Flexi Lead Shape It Flexi Lead, Chain, Super Magnet Super Beam, Mini Eye & Ring, Gender Changer Domed Bullet, Flat Bullet, Tuff Hook 2 x Super Grips (6-10mm & 11-15mm) Tough Carry Tube

The Deluxe Set, with 10M (32ft) of length, gives you 4 different flexibility choices. The slimmed down version of the Mega Set offers an excellent range of functionality.



Part No	Description	Product Information
CRSD	Deluxe Set	6 x 5mm Red Adoxim 1M Rods, 2 x 4mm Yellow Adoxim 1M Rods 2 x 6mm Black Adoxim 1M Rods, Flexi Lead Super Magnet, Super Beam, Mini Eye & Ring, Gender Changer, Domed Bullet, Flat Bullet, Tuff Hook, Tough Carry Tube

Rod Kits

The Super Six Set is the intermediate set in the Cable Rod System.



Part No	Description	Product Information
CRS6	Super Six Set	3 x 5mm Red Adoxim 1M Rods, 2 x 4mm Yellow Adoxim 1M Rods 6mm Black Adoxim 1M Rod, Flexi Lead Super Magnet, Mini Eye & Ring, Gender Changer Domed Bullet, Flat Bullet, Tuff Hook, Tough Carry Tube

The Standard Set has 5M (16ft) of length, which gives you 3 different flexibility choices, an ideal started kit.



Part No	Description	Product Information
CRSS	Standard Set	4 x 5mm Red Adoxim 1M Rods, 1 x 4mm Yellow Adoxim 1M Rod Tuff Hook, Gender Changer, Domed Bullet, Mini Eye & Ring, Flexi Lead, Tough Carry Tube

The Handy Set miniature set of rods, only 500mm in length, offers the ideal solution when working in a confined area.



Part No	Description	Product Information
CRHS	Handy Set	2 x 5mm Red Adoxim 0.5M Rods, 1 x 4mm Yellow Adoxim 0.5M Rod 1 x 6mm Black Adoxim 0.5M, 1 x 5mm Nylon 330mm Rod Mini Hook, Domed Bullet, Mini Eye & Ring, Tough Carry Tube

Rod Kit

The Toolbox Set miniature set of rods, only 330mm in length, offers great flexibility in cramped areas.



Part No	Description	Product Information
CRTB	Toolbox Set	2 x 5mm Red Adoxim 330mm Rods, 1 x 4mm Yellow Adoxim 330mm Rod, 1 x 6mm Black Adoxim 330mm Rod, 1 x 5mm Nylon 330mm Rod, Mini Hook, Domed Bullet, Mini Eye & Ring, Tough Carry Tube

The Polymer Set is a non-conductive, shortened set of rods which is ideal when working in confined spaces. Whilst it is compatible with the standard range of SuperRod attachments, it has its own range of polymer 'Glo in the Dark' attachments. An excellent choice when working in electrically sensitive areas such as server rooms.



Part No	Description	Product Information
SRPRS	Polymer Set 4	1 x 5mm x 330mm Round Black Rod 1 x 5mm x 330mm Round Red Rod 1 x 5mm x 330mm Flat Red Rod 1 x 5mm 330mm Round Glow Rod Mini Eye, Domed Bullet, Mini Hook, Glow Claw, Domed Eye
SRPRS8	Polymer Set 8	2 x 5mm x 330mm Round Black Rod 1 x 5mm x 330mm Round Red Rod 3 x 5mm x 330mm Flat Red Rod 2 x 5mm 330mm Round Glow Rod Mini Eye, Domed Bullet, Mini Hook, Glow Claw, Domed Eye
SRPRS12	Polymer Set 12	4 x 5mm x 330mm Round Black Rod 1 x 5mm x 330mm Round Red Rod 5 x 5mm x 330mm Flat Red Rod 2 x 5mm 330mm Round Glow Rod Mini Eye, Domed Bullet, Mini Hook, Glow Claw, Domed Eye

Rod Spares

Part No	Description	Product Information
CRBX5	Black Rod Spares	5 x 6mm Black Adoxim 1M Rods
CRRX5	Red Rod Spares	5 x 5mm Red Adoxim 1M Rods
CRYX5	Yellow Rod Spares	5 x 4mm Yellow Adoxim 1M Rods
CRNX2	Nylon Rod Spares 1M	2 x 1M Nylon Rods
CRSNX2	Nylon Rod Spares 175mm	2 x 175mm Nylon Rods
CRMXBT	Mega Set Bits Tube	Chain, Super Magnet Super Beam Mini Eye & Ring Gender Changer Domed Bullet Flay Bullet, Tuff Hook
CRSDBT	Deluxe Set Bits Tube	Super Magnet Super Beam Mini Eye & Ring Gender Changer Domed Bullet Flat Bullet, Tuff Hook
CRS6BT	Super Six Set Bits Tube	Mini Eye & Ring Gender Changer Super Magnet Domed Bullet Flat Bullet, Tuff Hook
CRSSBT	Standard Set Bits Tube	Mini Eye & Ring Gender Changer Domed Bullet Tuff Hook



Super Grips

The most secure way to attach your cable to your rods. Super Grips are available in 5 sizes and capable of pulling either single or multiple cables. Super Grips are quicker, cleaner and more secure than tying cable to rods with tape.

- ✓ Available in 5 sizes
- ✓ Manufactured from Stainless Steel
- ✓ Quicker and cleaner than tape
- ✓ Keeps access holes neat and small



Part No	Description	Product Information
CRSK0406	Single Pack pulling sock	(4-6mm)
CRSK0610		(6-10mm)
CRSK1115		(11-15mm)
CRSK1622		(16-22mm)
CRSK2330		(23-30mm)
CRSK0415	Multi Pack Pulling Sock	(4-15mm)
CRSK0615		(6-15mm)
CRSK1630		(16-30mm)
CRSK0430		(4-30mm)

The purpose of the Double Ended Super Grip is to speed up the installation of new cables into a pre-existing installation.

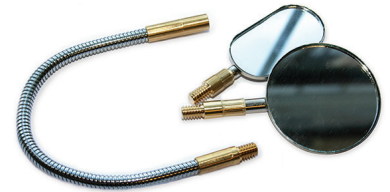


Part No	Description	Product Information
CRSKD1114	SuperRod Double Ended Super Grip	Inner diameter (11-14mm)

Inspection Mirror Kit

The inspection Mirror Kit from SuperRod features a pair of mirrors that attach to your rods via a length of Gooseneck material, making tricky jobs much easier.

Part No	Description	Product Information
SRMK	Inspection Mirror Kit	50mm Round Mirror 50mm Tall Rectangular Mirror 200mm of Steel Flexi Material



Super Flexi Magnet

Seriously strong retrieval of any magnetic object. Combine this with its flexibility for outstanding functionality.

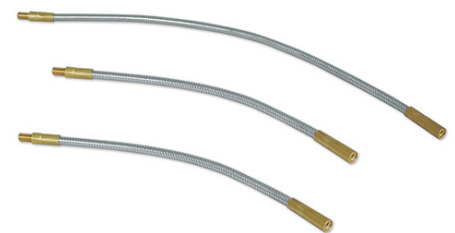
Part No	Description	Product Information
SFDM	Super Flexi Magnet	Retrieval of wire , chains and tools Will pick up 2.5kg



Gooseneck Kit

Even more flexibility with the selection of different length goosenecks.

Part No	Description	Product Information
SRG3	Gooseneck Kit	2 x 230mm gooseneck 1 x 370mm gooseneck



Super Flexi Beam

When illumination is required in an awkward situation, this attachment proves to be a real time saver. The LED torch is ideal for illuminating and inspecting difficult to view areas when installing cables e.g. cavity walls.

Part No	Description	Product Information
SRFSB	Super Flexi Beam	Ideal for illuminating and inspecting difficult to view areas when installing cables e.g. cavity walls



In-Line Swivel

The In-Line Swivel can easily be added to the end of your Cable Rods, to accept any twists or turns in the cable during installation. This is especially important when working with data cable, as twists can damage the cable's performance. The In-Line Swivel can also be used to join Super Grips together; this is useful when replacing old cable with new.



Part No	Description	Product Information
CRSW	In-line swivel	Can be easily added to the end of your Cable Rods, to accept any twists or turns in the cable during installation

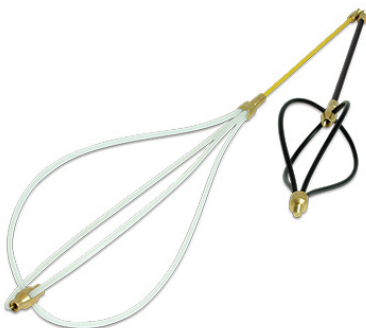
Flexi Combi Kit

The Flexi Combi Kit is the ultimate inspection and retrieval device, combining the Super Beam and Super Magnet.



Part No	Description	Product Information
SRFCK	Flexi Combi Kit	Super Flexi Beam and Super Magnet in one flexible kit

Gliders



Part No	Description	Product Information
SRGLIDE	Glider	The Super Grip and Super Beam can be attached to the Glider, further increasing the functionality of the product
SRGLIDEX2	Glider x 2	Ideal when guiding over uneven surfaces, perfect for aerial installations
SRGLIDER-P	Glo Glider	Luminescent version of Glider

Super Bullet Kit

Part No	Description	Product Information
CRSBK	Super Bullet Kit	The latest innovative attachment pack, contains - Domed Bullet, Flat Bullet, Spike Bullet and Magnetic Bullet



Super Beam

Illuminate any dark space with this highly useful torch attachment. The Super Beam is a self contained LED torch that can fix onto any of your Cable Rods. This brilliant little attachment turns your Cable Rod set into an instant inspection tool. It can also be used to locate the end of the rods within voids.

Part No	Description	Product Information
CRSB	Super Beam	A self-contained LED torch that can fix onto any of your Cable Rods
CRRB	Replacement Batteries	-



Brush Pairs

Use the Brush Pair in conjunction with your Cable Rod set to clear away debris and blockages in conduit, drain pipes and flues. The Brush Pair comes in two different sizes, enabling you to clean different-

Part No	Description	Product Information
CRBR2550	Brush Pair	1 x 25mm diameter (0.35 filament) 1 x 50mm diameter (0.90 filament)



The Claw

Use two attachments at once to route and retrieve. The Claw is a double-headed attachment to enable the use of two attachments instead of one. For example, you could use the Super Beam with a Tuff Hook to retrieve cable in dark voids.

Part No	Description	Product Information
SRCLAW	The Claw	Come complete with a male Gender Changer to allow a connection with female threaded attachments



Chain and Magnet

A simple but effective method for routing cable. Simply screw the chain onto the end of your rod and place into the void you wish to route through. Next, take the Super Magnet and screw it onto the other rod. Finally, using your final access point (i.e. plug socket, floor board etc) fish inside the void until the magnet comes into contact with the chain and draw the rod through.



Part No	Description	Product Information
CRCM	Chain & Magnet	Route cable with ease with this efficient attachment combination
SRC90	Chain 90cm	Perfect for longer cable runs and works particularly well in aluminium door channels

Tri Hook

Designed by an electrician to offer three times the chance of hooking a cable from a wall space. The Tri Hook is a brilliant solution to an everyday problem.



Part No	Description	Product Information
CRCM	Magcom Tracer	Sensitive to approximately 60mm depending on the material

Carry Case

- Perfect storage solution for your cable rod kits and accessories
- Central opening to house multiple 1m rod sets and long drill bits
- External zipped pocket to house your SuperRod accessories
- Detachable internal soft 3D Air Mesh pocket to store and protect your inspection camera
- Easy and comfortable to carry with its adjustable shoulder strap

Part No	Description	Product Information
SRCASE	Carry Case	600 Denier polyester material and stronger zips for optimum durability 1250 x 90 x 60mm



Cable Jack

The Cable Jack is an innovative cable spooling device. It uses your existing 44mm Cable Rod packaging tube, along with metal collars and legs, to form an 'A' frame. You can use this frame as a lightweight spooler for small jobs. It can also hold up to 35kg of weight.

Part No	Description	Product Information
SRJK	The Cable Jack	Holds up to 35kg of weight 2 x Aluminium Collars 4 x 335mm Fibre Glass Legs 1 x 450mm length packaging tube
SRJKPLUS	The Cable Jack Plus	Holds up to 70kg of weight



SRJK



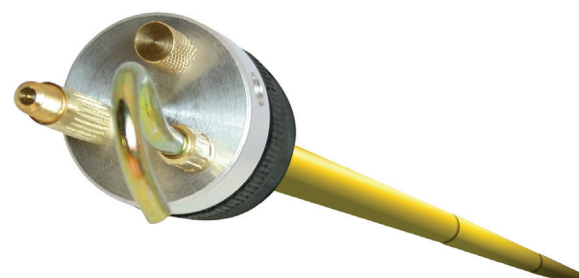
SRJKPLUS



Telescopic Pole

The Telescopic Pole can extend to 5.6 metres in seconds. The pole comes complete with a versatile platform which allows up to three SuperRod attachments to be used at any one time. This product is ideal for working at height, across loft spaces and under floors.

Part No	Description	Product Information
S RTP	Telescopic Pole	Can extend to 5.6 metres in seconds Allows up to 3 attachments to be used at any one time



Super Cam & Super Cam Max

20M Wireless inspection camera, connect the Super Cam to any smart device and capture data. Work safer and smarter by streaming high resolution video to your smart device in real time.

- ✓ Compact and light design
- ✓ Customisable app icon layout
- ✓ 6 Adjustable bright white LEDs
- ✓ 180 degree angle adaptor
- ✓ includes 1M telescopic stick
- ✓ Wireless range up to 20M
- ✓ Always up viewing mode
- ✓ 60 min Fast charge
- ✓ Auto/manual focus
- ✓ Non-contact voltage detector
- ✓ IP67 Dustproof and waterproof
- ✓ Built-in WiFi hotspot
- ✓ Record video with sound
- ✓ Digital pinch zoom
- ✓ Instructions available on the App



Part No	Description	Product Information
SRCAMV65	Super Cam Wireless Inspection Camera	1 x Super Cam Wireless Inspection Camera, 1 x Padded Case, 1 x Flexi Lead, 1 x Gooseneck, 1 x Tuff Hook, 2 x Adaptors, 1 x Male Gender Changer, 1 x Super Magnet, 1 x 1M Telescopic Stick, 1 x Super Cam Set Up Guide
SRCAMV65MAX	Super Cam Max Wireless Inspection Camera	20M with WiFi Hotspot on board memory when signal is out of reach 16GB, 10,000 pictures 30h video recording 1 x Super Cam Max Wireless Inspection Camera with on board memory, 1 x Padded Case, 1 x Flexi Lead, 1 x Gooseneck, 1 x Tuff Hook, 2 x Adaptors, 1 x Male Gender Changer, 1 x Super Magnet, 1 x 1M Telescopic Stick, 1 x Super Cam Set Up Guide



Jakoda Socket Tester Holder

The smarter way to store your socket tester.

- ✓ 2-in-1 tool, stores your socket tester and nulls your multi-function tester
- ✓ Ideal for hanging your socket tester on your tool bag
- ✓ Time-saving MFT nulling device
- ✓ Remove risk of damage / loss of your socket tester
- ✓ Easy-access to your socket tester
- ✓ Save space in your toolbag

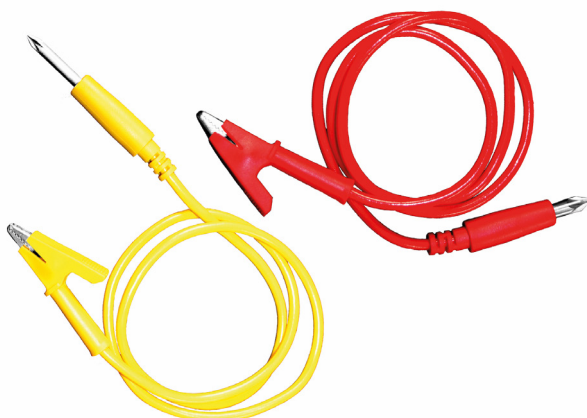


Part No	Description	Product Information
SRSTH	Jakoda Socket Tester Holder with Nulling Feature	2-in-1 tool, stores your socket tester and nulls your multi-function tester Manufactured from thermoplastic to BS 1363/A

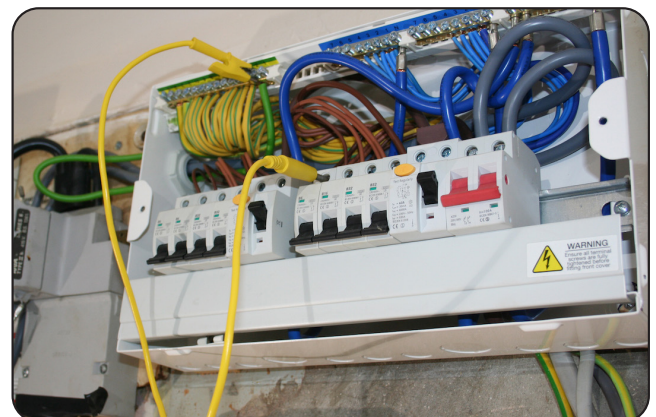


R1 R2 Link

- ✓ High strength magnetic link used for continuity testing of R1 + R2
- ✓ Eliminates the risk of damaging connections
- ✓ Saves time during testing and speeds up condition reports
- ✓ Eliminates the need to remove conductors on R1 + R2 tests
- ✓ Includes 1 x 750mm PZ2 suitable for most devices and 1 x 750mm PZ1 for RCBO's with deep terminals



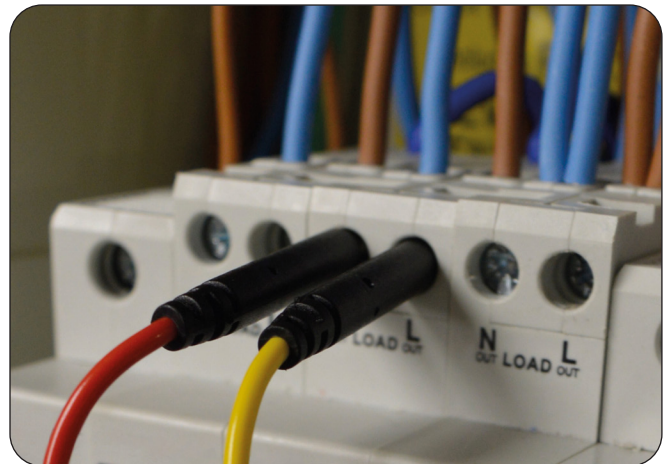
Part No	Description	Product Information
SRR1R2	1 x 750mm PZ1 RCBO's 1 x 750mm PZ2 MCB's	Saves time when testing R1 + R2



IR Link

The IR Link is a high strength magnetic link for insulation Resistance testing of Line and Neutral to Earth on RCBO protected circuits that contain sensitive equipment.

- ✓ **Speeds up EICR's**
- ✓ **Saves time during testing**
- ✓ **Facilitates testing in line with the latest BS7671 requirements**
- ✓ **The IR Link provides an alternative method to link line & neutral on any circuits protected by an RCBO or AFDD**
- ✓ **No need to remove conductors from RCBO's**



Part No	Description	Product Information
SRIR	IP Link	Connects Line & Neutral of an RCBO to one test lead

Glow Fish

Fish your cables through wall cavities, suspended ceilings and tight spaces.

- ✓ **Constructed from a non-conductive material that offers high tensile strength, exceptional durability and control.**
- ✓ **Maintains straightness when uncoiled yet will bend in the desired direction.**
- ✓ **Each end is built from a material that has memory and can be bent into shape to guide over obstacles whilst fishing your cable.**
- ✓ **Suitable for horizontal, corner, diagonal, top-down and bottom-up fishing**
- ✓ **Comes complete with Tail End, Leader Wheel, SuperRod Connector, Domed Bullet and a handy metal housing to store your fish tape when not in use.**
- ✓ **Includes Tail End for attaching cable and it also gives you SuperRod connectivity e.g. for using Super Grips or the Tuff Hook (sold separately)**



Part No	Description	Product Information
SRGF4	Glow Fish	Product Length - 4M Hole size required - 22mm Metal Housing - 450 x 450 x 35mm Weight - 705g

Super Magnet



Part No	Description	Product Information
CRMG2	Super Magnet	The Super Magnet works very well in conjunction with the Telescopic Pole when testing smoke alarms. The magnet forces the connection and proves the circuit is working with minimal disruption on site

Leak Mate

The Leak Mate is a reusable temporary seal for pipework that seals completely around the damaged pipe in seconds. Simply and easy to install, the Leak Mate allows for little disruption and no need for emergency call outs.

The Leak Mate is a temporary solution, the leak should be fixed by a qualified plumber at the nearest convenient opportunity.



Part No	Description	Product Information
SRLM	Leak Mate Reseal leaking pipework in seconds	1 x Leak Mate tool 3 x Re-usable seals (sizes 10mm, 15mm and 22mm)

Flat Rat

The Flat Rat 10M features an ergonomic case with sloped handle for a smooth spooling action. The high-quality flat material allows greater control while routing.

- Route
- Retrieve
- Bend around corners
- Perfect for under floors & behind walls

Part No	Description	Product Information
FRAT10	Flat Rat	1 x Flat Rat 10M 1 x Steel Domed Bullet



Cable Rats

The combination of both coiled or rod based products means you are equipped for whatever challenge you face. Rod-based products tend to perform better in more open areas (ceilings, wall cavities etc) and coiled products tend to perform better in a contained environment such as conduit or ducting.

Part No	Description	Product Information
RATPLUS20	Cable Rat Plus	20M length, specialised material for easy handling and low surface friction
RATPLUS30		30M length, specialised material for easy handling and low surface friction



Specials supplied to order

Cable Zilla

With the Cable Zilla range, SuperRod have matched the requirements for strength and flexibility to deliver a tool that is fit for any challenge, with options from 50M up to 150M.

- ✓ **Incredibly strong frame designed for the challenges of being on site**
- ✓ **Various diameters of rod available to suit all requirements**



Part No	Description	Product Information
CZLA50X6S	Cable Zilla (50M)	50M length / 6mm diameter 450mm wide frame Guide wheel attachment Flexi Lead attachment Mini Eye attachment
CZLA50X6		50M length / 6mm diameter 550mm tall frame Guide wheel attachment Flexi Lead attachment Mini Eye attachment
CZLA100X9	Cable Zilla (100M)	100M length / 9mm diameter 1000mm tall frame Flexi Lead attachment
CZLA150X9	Cable Zilla (150M)	150M length / 9mm diameter Flexi Lead attachment

Specials supplied to order

Super Cams

SuperRod's cameras have always reduced the element of uncertainty when on a job, initially with a wireless camera, and now with a series of 'borescope' style cameras. Each allows you to inspect and record across a wide range of distances from a few metres up to 120M.



Part No	Description	Product Information
SRCAMV7.1	Super Cam V7	Features a high-quality camera & record function which can be used over long distances Featuring a sprung camera head with integral light source Provides outstanding resolution and image clarity IP68 Protection
SRCAMV8	Super Cam V8	Features a high-quality camera & record function which can be used over long distances Also featuring a sprung camera head with integrated glider and LED lights for ease of use IP68 Protection

Gekko Gripper

The Gekko Gripper has been designed to make electricians' jobs easier when routing cables through floor voids.

- ✓ **Route cable under floors, over ceilings and through Dot and Dab walls**
- ✓ **Magnet and cord combination navigates many obstructions**
- ✓ **Easily connects to your SuperRod attachments**
- ✓ **6M heavy-duty nylon cord**
- ✓ **Mini eye & ring connects to most cables**
- ✓ **Includes convenient spool and storage tube**
- ✓ **Counter display available**

Part No	Description
SRGG62	Gekko Gripper



Complete with FREE POS Display
(for order over 12 pieces)

Cable Tongues

The Cable Tongue is designed for pulling cables through walls, above ceilings, below floors and anywhere else a cable needs to go. The new Cable Tongue Pro has a new fitting allowing you to use SuperRod attachments.

- ✓ **3.6M of Cable Tongue (coiled)**

Part No	Description
SRCT36	3.6M Cable Tongue
SRCTPRO	3.6M Cable Tongue and extra fitting allowing you to use Super Rod attachments



Quick Drills

The Quick Drill is especially useful when there is rubble or insulation material present in the cavity as the drill bit is left in place whilst the cable is attached.

- ✓ **Applications routing of cables i.e. Electrical, TV, satellite, telephone, Alarm, Data, Speakers etc**

Part No	Description	Product Information
SRQD10	Quick Drill	10mm
SRQD16	Quick Drill	16mm



Sleeved Quick Drills

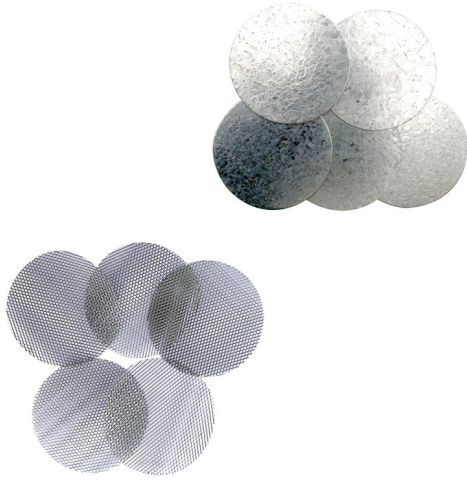
Drill bit and sleeve technology that simplifies passing of cable or pipe through cavity walls; suitable for walls up to 225mm deep.

- ✓ **Ready-to-use sleeve - Starter Pack**
- ✓ **Multi-purpose - high performance carbide drill bit, offering increased penetration, long tool life and efficiency across multiple material types**

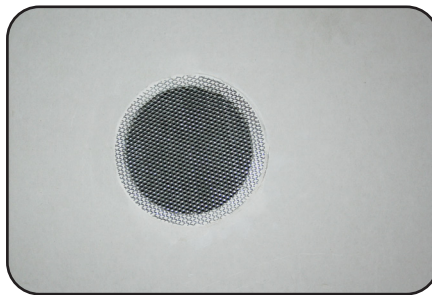
Part No	Description	Product Information
SRSDQ22	Sleeved Quick Drill	22mm
SRSDQ28	Sleeved Quick Drill	28mm



Cavity Master Accessories



Part No	Description	Product Information
CRCAPS	Solid Plates x 5	The solid plates have been designed to cover cavities in surfaces such as floor boards, by sitting in the rebate made by the cavity master
CRCAPM	Mesh Plate x 5	The mesh plates work by covering over cavities made in plaster board



Stingray

The Stingray enables installers to protect various types of cable including electrical, structured cabling, coaxial, telephone, optical fibre, fire alarm, as well as plastic water pipes for air-conditioning. The Stingray stops cable becoming entangled in any sharp edges of a ceiling grid metal frame work.

- ✓ **The professional way to route cable over a ceiling**
- ✓ **Protects expensive and fragile cables as well as ceilings from twisting & distorting**
- ✓ **Prevents cables from tangling with the ceiling, saving time and labour**
- ✓ **Smooth interior creates an almost frictionless cable run**
- ✓ **Side slit allows for easy cable removal at any time**
- ✓ **Fits standard ceiling grid**
- ✓ **Easy to install and remove**

Part No	Description
SRSR	Stingray



NOTES

Terms & Conditions

Greenbrook Industries Ltd – CONDITIONS OF SALE APPLICATION CONDITIONS TO ALL CONTRACTS

The following General Conditions of Sale shall apply to all Contracts for the sale of the Company's goods so far as the same are not varied by or inconsistent with such Special Conditions as may be agreed to between the Company and its customers in particular instances. Brochures advertising or other matter issued by or on behalf of the Company shall not form part or be admissible as evidence in any proceedings by or against the

Company in relation to all contracts entered into with the Company for work done or goods supplied.

These conditions will prevail at all times over any terms of conditions attached to the buyer's order form or acceptance or contained on any other written or oral intimation. Special conditions can only be agreed in writing and signed on behalf of the Company by a Director. Any such special conditions shall only apply to that particular transaction all other conditions herein shall remain in full force and effect.

CONFIRMATION OF ORDERS

No order whether given by a customer verbally or in writing shall constitute a contract unless and until its acceptance embodying these conditions and any special conditions as may be agreed upon has been confirmed by the company in writing. No orders given and accepted as aforesaid shall be countermanded without the Company's consent in writing and it is an implied condition of such cancellation that the customer shall indemnify the Company against all loss and expenses occasioned thereby. No clerical errors of omissions in quotations or acceptances of orders shall annul the sale but shall be subject to subsequent correction by the Company and no compensation shall be allowed to the customer in respect thereof.

PRICES

Prices and discounts are subject to alteration without notice.

PAYMENT

Payment of invoices shall, unless otherwise agreed in writing, be made in full without any deduction or set-off by the due date stated on the invoice.

Failure to make due payment in respect of any deliveries or instalments under this or any other contract between the buyer and the Company shall entitle the Company to delay, suspend or cancel deliveries in whole or in part at its option.

Payment of all invoices shall be made within 30 days of the date of the invoice unless otherwise agreed in writing. Any extension of credit allowed to the buyer may be changed or withdrawn at any time.

If payment is not made in full by the due date stated on the invoice:

the Company reserves the right to charge interest to the buyer at the rate of 2% per month on the unpaid balance (such interest to accrue on a day to day basis from the due date for payment until receipt by the Company of the full amount whether before or after any judgement); and

the buyer shall indemnify the Company against all costs and expenses (including any legal costs and expenses on a full indemnity basis) incurred or sustained by the company in recovering sums due or in exercising its right pursuant to Clause 1 in each case without prejudice to any other rights or remedies available to the Company.

Payment shall be due whether or not property in the goods has passed by virtue of Clause 1 above and the Company shall (without prejudice to any other right or remedy) accordingly be entitled to sue for the price once the same is due even if property in the goods has not passed.

RISK AND TITLE TO GOODS

The risk in the goods passes to the buyer upon delivery but property in the goods remains vested in the Company and shall only pass from the Company to the buyer upon full payment being made by the buyer of all sums due on whatsoever account or grounds to the Company from the buyer. In the event of the goods being sold by the buyer in such manner as to pass to a third party a valid title to the goods, whilst any such sums are due as aforesaid, the buyer shall place such proceeds in a separate bank account. The Company's right under this sub-clause (a) shall attach to the proceeds of such sale. Nothing herein shall constitute the buyer the agent of the Company for the purposes of any such sub-sale.

The buyer agrees that prior to full payment being made as aforesaid, the Company may at any time repossess the goods and enter upon the buyer's premises and remove the goods there-from (and dispose of the same in any manner it may decide) and that prior to such payment the buyer shall keep such goods as fiduciary agent and bailee and separate and identifiable for this purpose.

In the event of the goods becoming constituents of or being converted into other products whilst sums are due as provided in sub-clause (a) hereof, the Company shall have the ownership of and title to such other products (but not by way of a charge) as if they were the goods and accordingly this clause 1 shall so far as appropriate apply to such other products subject to the buyer's right to the surplus of any monies realised by the said products in excess of those due to the Company as provided herein.

Any implied authority that the buyer shall be entitled to sell the goods as pass property in the same to third parties in the normal course of its business or manufacture products out of the same or sell such products will continue until otherwise notified to the buyer by the Company or until the happening of any of the following events (whichever is earlier):

Any notice to the buyer that an Administrative Receiver or other Receiver or Manager is to be or has been appointed in respect of its undertaking or a material part thereof or other property or assets;

any notice to the buyer that a petition to wind up the buyer is to be or has been presented to the buyer under

Terms & Conditions

any notice to the buyer that a petition to wind up the buyer is to be or has been presented to the buyer under Section 124 of the Insolvency Act 1986 or otherwise or any notice to the buyer of a proposal to pass a Resolution to wind up the buyer (including any proposal by the buyer so to do);
a decision by the buyer to make a voluntary arrangement or composition with its creditors or any notice to the buyer and/or any of its creditors that a proposal for the same is to be or has been made;
the buyer becoming unable to pay its debts as such expression is defined by the Insolvency Act 1986; or
any notice to the buyer that it is to be the subject of a petition for an Administration Order presented to the Courts or the making of any Administration Order in respect of the buyer; and upon the happening of any such events the buyer shall immediately notify a director (or other authorised executive) of the company.

On receipt of written notice from the Company or on the happening of any of the events set out in sub-clause (d) above, the buyer's implied authority to sell the Company's goods shall immediately be withdrawn and all such goods and products made there-from shall immediately be delivered to the Company.

The buyer shall insure and keep insured the goods to their full value against all normal commercial risks until the date that the property in the goods passes from the Company and shall whenever requested by the Company produce a copy of the policy of insurance. Without prejudice to any other rights of the Company, if the buyer fails to comply fully with the terms of this sub-clause, all sums whatever owing by the buyer to the company shall immediately become due and payable.

DELIVERY

Minimum carriage paid orders £175 (mainland UK only). £10.00 carriage charge for any orders under £75 and up to 25kg in weight. Above 25kg charged as advised.

If goods are carried and delivered by the Company or any other carrier for the care, carriage and unloading thereof whether by the Company's servants or otherwise shall in all respects be at the customer's cost and risk and no compensation or damage will be paid by the Company for the loss, damage, delay, detention or mis-delivery, whether caused by the act or default of the Company or its Servants or by accident or otherwise. The customer shall notify the Company and the carrier within 3 days of delivery of any shortage or damage to goods caused in transit or any irregularity in the carriage or delivery of the goods and in the prosecution of any claim in respect thereof the company shall be the agent of the customer who before giving the carrier a receipt for the goods tendered shall examine them and if unable to do so shall sign for the same unexamined.

Non delivery of goods must be reported to the Company within 3 days of receipt of invoice otherwise the Company cannot accept responsibility for any loss.

TIME FOR DELIVERY

Any dates quoted for delivery of goods are approximate only and the Company shall not be liable for any delay in delivery of the goods howsoever caused. Time for delivery shall not be of the essence unless previously and expressly agreed by the Company in writing.

DEFECTIVE GOODS

The use of any description of goods sold shall not constitute a contract for the sale thereof a sale by description and whether or not the customer inspects the goods either before or after delivery no warranty or guarantee shall be implied as to the quality, state, condition or fitness of the goods for the purposes for which they are required. All warranties, if given, must be by special condition written on or referring in writing to the Company's Order Acknowledgement Form in question and signed by a Director or Secretary of the Company. Subject as aforesaid the Company undertakes to replace or repair such goods or parts thereof which the customer shall have returned to the Company's Works or to such Works as the Company shall direct which in the opinion of the Company shall require replacement and repair owing to the same being defective in design material or workmanship.

LIEN

In addition to any right of lien to which the Company may by law be entitled the Company shall be entitled to a general lien on all goods of the customer in the Company's possession (although such goods or some of them may have been paid for) for the unpaid price of any other goods sold and delivered under this or any other contract.

RETURN OF GOODS

Goods will only be accepted for return if a Returns Authorisation Number has been issued. Goods returned without the Company's consent in writing will not be accepted for credit. All returned goods are returned at the customer's cost.

ILLUSTRATIONS AND SPECIFICATIONS

The illustrations are typical and cannot be held as binding. The specification is the current specification and the Company reserve the right to alter or vary the specification without notice.



CONTACT DETAILS

Greenbrook Electrical
62 West Road,
Harlow,
Essex,
CM20 2BG

📞 01279 772 772

✉️ sales@greenbrook.co.uk



www.greenbrook.co.uk

Partners & Accreditations

