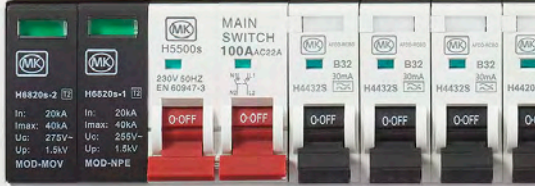


# MK SENTRY CIRCUIT PROTECTION SOLUTIONS



Sentry



# MK SENTRY RANGE INTRODUCTION

The MK Sentry circuit protection product range has been in production for more than 40 years and through the license agreement its continued supply into the market is guaranteed. The extensive range fully complies with the requirements of the Wiring Regulations, and has the same full guarantees previously received with the offering.

The MK Sentry range of consumer units have been stylishly designed to blend in with its environment. The curved lines and slim line appearance mean it won't look out of place when installed in hallways, lounges or kitchens.



## POPULATED UNITS

The pre-populated range of consumer units offers an off the shelf alternative available in 5 different sizes.



### MCB

Available as B and C curve. Current range 6A-63A with a breaking capacity of 6kA.



### RCD

Available as Type A, AC, S and B. Current range of 25A-100A and tripping capacity 10mA to 300mA. Breaking capacity 10kA.



### AFDD

Available as B and C curve with Type A RCD. Current range of 6A-40A with a breaking capacity of 6kA.



### RCBO

Available as B and C MCB curve, RCD Type A and AC. Current range 6A-50A and tripping current 30mA. Breaking capacity 6kA and 10kA. Standard height and miniature versions available.



### SPD (SURGE)

Recommended for all low voltage electrical installations, it prevents the spread of over voltages in the electrical installations and protects the load.



## ENCLOSURES

The empty consumer units enable specific configurations to suit required applications with the use of MCB's, RCD, RCBO, AFDD and SPD.



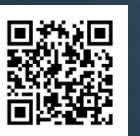
## SUPPORTS LATEST BS7671:2018

Full range of products to support compliance with the latest edition of the Wiring Regulations, including full metal non-combustible enclosures for Consumer Units.



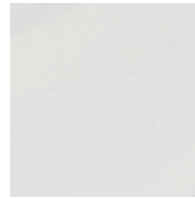
## GUARANTEE

All products are guaranteed for 10 years (excluding SPD and AFDD 5 years). Offering all of the key products to complete an installation.



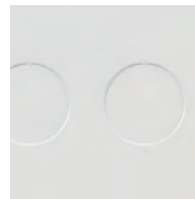
# FEATURES AND BENEFITS

## Enclosures



### MANUFACTURED FROM CORROSION AND FIRE RESISTANT MATERIAL

Corrosion and fire resistant material, which ensures full compliance with latest legislation.



### MULTIPLE EXTRA LARGE KNOCK OUTS

Aides and eases installation.



### CURVED STYLISH DESIGN

Blends into the environment.



### TOP HINGED DOOR

Prevents door being left open after use leading to a possible fire risk. Earth continuity provided through hinge mechanism no additional cable required.



### CONTINUAL EARTHING

Only need to earth once via the base.

### WHITE COLOUR

Modernised aesthetics for visible installations.

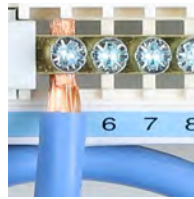


## CONSUMER UNIT SELECTION GUIDE

- STEP 1** Determine the type of consumer unit configuration required. e.g surge protected, split load, standard or combination of split load / single RCD or dual RCD. For each switch disconnector or RCD to be used allow 2 modular ways.
- STEP 2** Determine the number of outgoing circuits required. e.g cooker, lighting, ring main etc. For each circuit to be protected by an AFDD, RCBO or MCB allow 1 modular way.
- STEP 3** Determine the number of 'spare' modular ways required for future upgrades. For each 'spare' modular way select 1 sentry blank module – H5545S (cover mounted blanks supplied with consumer units).
- STEP 4** Now add together the total number of modular ways required.
- STEP 5** Select from our range of metal surface, recessed or stacked consumer units (using standard consumer units plus stacking kits). Choose the type and size most appropriate for your requirements.

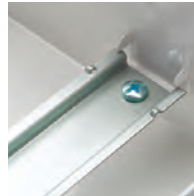


# FEATURES AND BENEFITS



## BACKED OUT AND CAPTIVE COMBI-HEAD SCREWS

Allows simple and speedy installation.



## EASILY REMOVABLE DIN RAIL

Simplifying and easing first fix.



## SUPPORTING DIN RAIL "T" BAR

Additional support to prevent bowing and twisting which has been raised for improved cable routing.

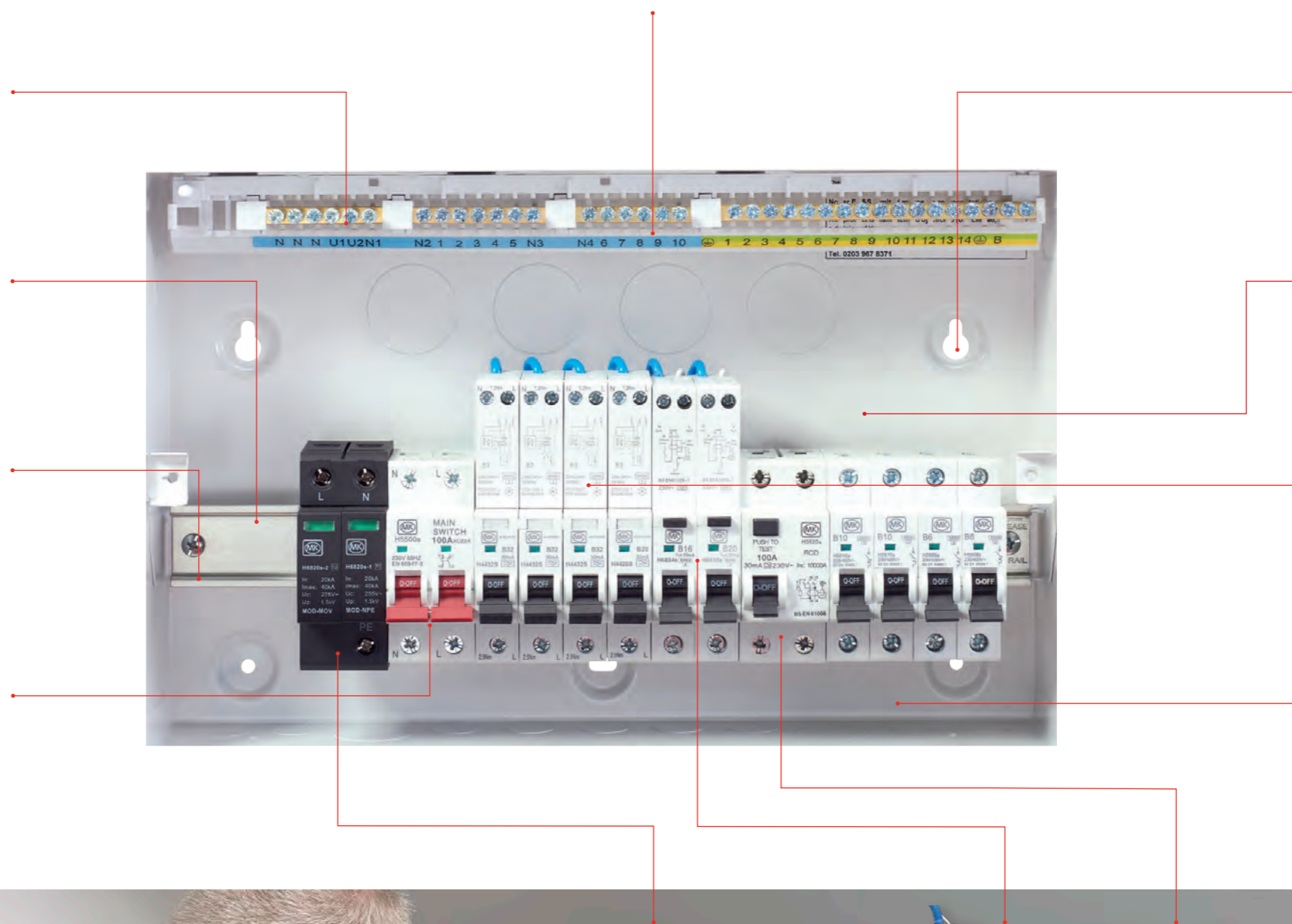


## OFFSET INCOMER

Provides additional wiring space making mains input connections easier.

## COLOUR CODED EARTH AND NEUTRAL TERMINAL

At top of unit for ease of wiring.



## FIXING HOLES

Tripod fixing to cope with uneven surfaces.



## ADDITIONAL WIRING SPACE

240mm height for increased wiring space.



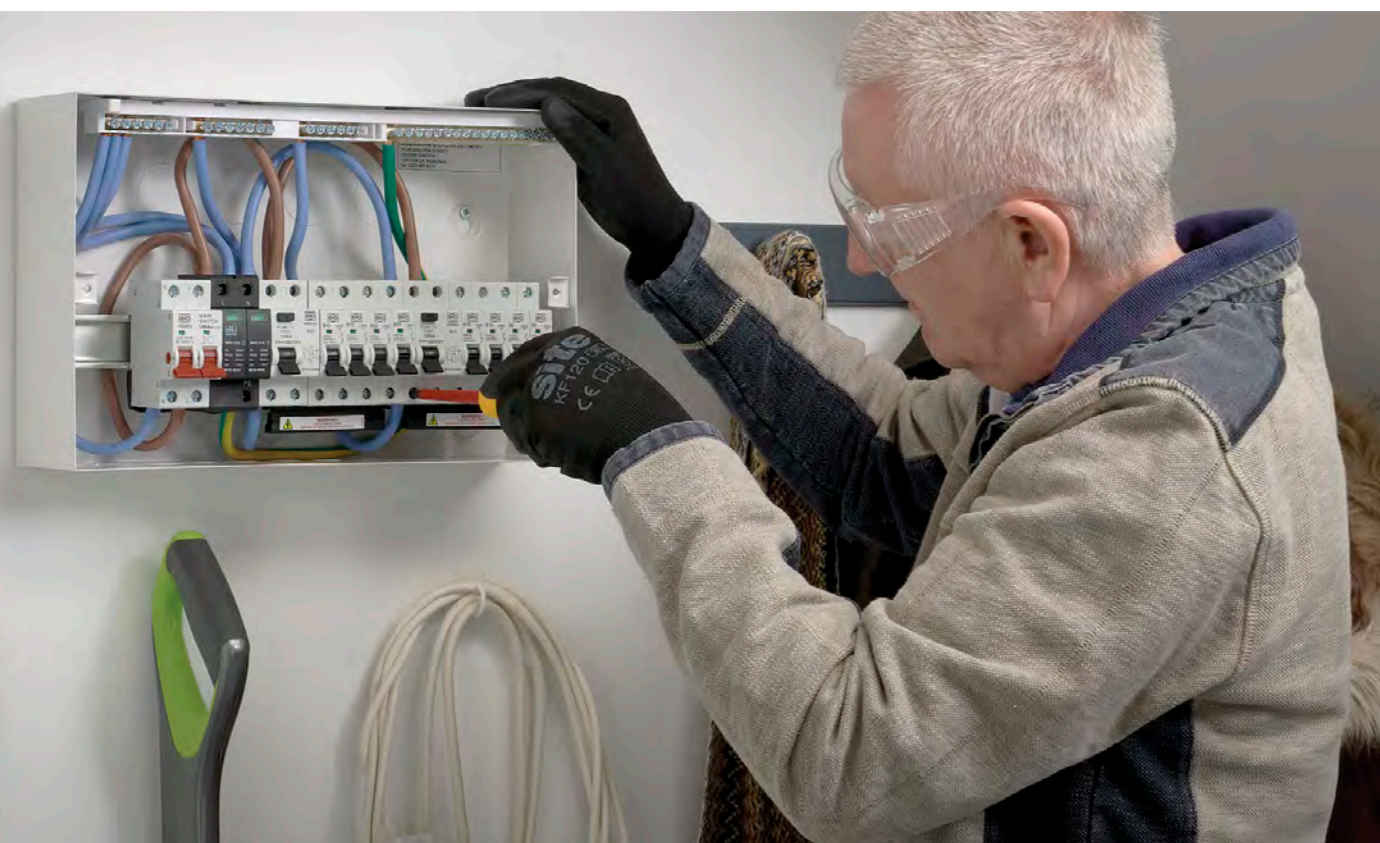
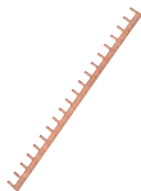
## ARC FAULT DETECTION DEVICE (AFDD)

Provides additional protection against accidental fire in the home.



## FLOATING BUSBAR SYSTEM

Gives maximum installation flexibility.



## SURGE PROTECTION DEVICE (SPD)

Protects against voltage spikes e.g. lightning strikes.



## RCBO

Protects electrical equipment from residual current and over current.



## TYPE AC RCD

Detects AC fault currents only. Applicable to loads without electronic components.

## TYPE B RCD

Detects AC, pulsating DC and smooth DC fault currents for equipment with electronic components e.g. EV charging.

## TYPE S RCD

Detects AC fault currents only providing upstream selectivity.

## TYPE A RCD

Detects AC fault currents and pulsating DC components. Applicable for single phase invertors, induction hobs, IT equipment, lighting (dimmer and LED drivers) & EV charging.



## Consumer Units

METAL  
ENCLOSURE ONLY  
RECESSED



**YR5608sMET**  
8 WAY ENCLOSURE ACCEPTS  
8 ONE MODULE PRODUCTS  
(1 INTEGRAL NEUTRAL BAR)



**YR5612sMET**  
12 WAY ENCLOSURE  
ACCEPTS  
12 ONE MODULE PRODUCTS  
(2 INTEGRAL NEUTRAL BAR)



**YR5616sMET**  
16 WAY ENCLOSURE  
ACCEPTS  
16 ONE MODULE PRODUCTS  
(3 INTEGRAL NEUTRAL BARS  
FITTED WITH LINKS)



**YR5621sMET**  
21 WAY ENCLOSURE  
ACCEPTS  
21 ONE MODULE  
PRODUCTS  
(3 INTEGRAL NEUTRAL  
BARS FITTED WITH  
LINKS)

METAL  
ENCLOSURE ONLY  
SURFACE



**Y5604sMET**  
4 WAY ENCLOSURE  
ACCEPTS  
4 ONE MODULE PRODUCTS  
(1 INTEGRAL NEUTRAL BAR)



**Y5608sMET**  
8 WAY ENCLOSURE  
ACCEPTS  
8 ONE MODULE PRODUCTS  
(1 INTEGRAL NEUTRAL BAR)



**Y5612sMET**  
12 WAY ENCLOSURE  
ACCEPTS  
12 ONE MODULE PRODUCTS  
(2 INTEGRAL NEUTRAL  
BARS FITTED WITH LINKS)



**Y5616sMET**  
16 WAY ENCLOSURE  
ACCEPTS  
16 ONE MODULE  
PRODUCTS (3 INTEGRAL  
NEUTRAL BARS FITTED  
WITH LINKS)



**Y5621sMET**  
21 WAY ENCLOSURE  
ACCEPTS  
21 ONE MODULE  
PRODUCTS (3 INTEGRAL  
NEUTRAL BARS FITTED  
WITH LINKS)

### DIMENSIONS:

	Width	Height	Depth
<b>8 WAY</b>	238 x	244 x	95-155mm
<b>12 WAY</b>	310 x	244 x	95-155mm
<b>16 WAY</b>	382 x	244 x	95-155mm
<b>21 WAY</b>	472 x	244 x	95-155mm

### DIMENSIONS:

	Width	Height	Depth
<b>4 WAY</b>	144 x	244 x	116mm
<b>8 WAY</b>	238 x	244 x	116mm
<b>12 WAY</b>	310 x	244 x	116mm
<b>16 WAY</b>	382 x	244 x	116mm
<b>21 WAY</b>	472 x	244 x	116mm

## Consumer Units

METAL  
ENCLOSURE + 100A SWITCH DISCONNECTOR  
SURFACE



**Y5704sMET**  
4 WAY ENCLOSURE  
100A SDC ACCEPTS  
A FURTHER 2  
ONE MODULE PRODUCTS



**Y5708sMET**  
8 WAY ENCLOSURE  
100A SDC ACCEPTS  
A FURTHER 6  
ONE MODULE PRODUCTS



**Y5712sMET**  
12 WAY ENCLOSURE  
100A SDC ACCEPTS  
A FURTHER 10  
ONE MODULE PRODUCTS



**Y5716sMET**  
16 WAY ENCLOSURE  
100A SDC ACCEPTS  
A FURTHER 14  
ONE MODULE PRODUCTS



**Y5721sMET**  
21 WAY ENCLOSURE  
100A SDC ACCEPTS  
A FURTHER  
19 ONE MODULE  
PRODUCTS

### DIMENSIONS:

	Width	Height	Depth
<b>4 WAY</b>	144 x	244 x	116mm
<b>8 WAY</b>	238 x	244 x	116mm
<b>12 WAY</b>	310 x	244 x	116mm
<b>16 WAY</b>	382 x	244 x	116mm
<b>21 WAY</b>	472 x	244 x	116mm

METAL  
FULLY POPULATED SPLIT LOAD ENCLOSURE  
+ 100A SWITCH DISCONNECTOR + TYPE A RCD  
SURFACE



**Y8664sMET**  
12 WAY ENCLOSURE  
100A SDC  
2 X 100A 30MA RCD  
6 X MCBS (2 X 6A, 1 X 16A,  
2 X 32A AND 1 X 40A)



**Y8665sMET**  
16 WAY ENCLOSURE  
100A SDC  
2 X 100A 30MA RCD  
8 X MCBS (2 X 6A, 2 X 16A,  
3 X 32A AND 1 X 40A)  
ACCEPTS A FURTHER 2  
ONE MODULE PRODUCTS



**Y8666sMET**  
16 WAY ENCLOSURE  
100A SDC  
2 X 100A 30MA RCD  
10 X MCBS (3 X 6A, 2 X 16A,  
4 X 32A AND 1 X 40A)



**Y8678sMET**  
21 WAY ENCLOSURE  
100A SDC  
2 X 100A 30MA RCD  
12 X MCBS (3 X 6A, 2 X 16A,  
2 X 20A, 4 X 32A AND  
1 X 40A)  
ACCEPTS A FURTHER 3  
ONE MODULE PRODUCTS



## Consumer Units

METAL  
FULLY POPULATED ENCLOSURE  
+ TYPE A RCD  
SURFACE



**Y9550sMET**  
4 WAY ENCLOSURE  
80A 30MA RCD  
2 X MCBS  
(1 X 6A AND 1 X 16A)



**Y9551sMET**  
4 WAY ENCLOSURE  
80A 30MA RCD  
1 X MCB (1 X 50A)



**Y9552sMET**  
8 WAY ENCLOSURE  
80A 30MA RCD  
6 X MCBS  
(3 X 6A, 1 X 16A AND 2 X 20A)

METAL  
POPULATED ENCLOSURE  
+ 100A SWITCH DISCONNECTOR  
+ TYPE A RCBO  
SURFACE



**Y9673sMET**  
12 WAY ENCLOSURE  
100A SDC  
6 X RCBOs  
(2 X 6A, 1 X 16A, 2 X 32A AND  
1 X 40A) ACCEPTS A FURTHER  
4 ONE MODULE PRODUCTS

METAL  
ENCLOSURE + 100A SWITCH DISCONNECTOR  
+ SURGE DEVICE  
SURFACE



**YS5708sMET**  
8 WAY ENCLOSURE  
100A SDC  
1X SURGE ACCEPTS  
A FURTHER 4  
ONE MODULE PRODUCTS



**YS5712sMET**  
12 WAY ENCLOSURE  
100A SDC  
1 X SURGE ACCEPTS  
A FURTHER 8  
ONE MODULE PRODUCTS



**YS5716sMET**  
16 WAY ENCLOSURE  
100A SDC  
1 X SURGE ACCEPTS  
A FURTHER 12  
ONE MODULE PRODUCTS



**YS5721sMET**  
21 WAY ENCLOSURE  
100A SDC  
1 X SURGE ACCEPTS  
A FURTHER 17  
ONE MODULE PRODUCTS

### DIMENSIONS:

	Width	Height	Depth
<b>4 WAY</b>	144 x	244 x	116mm
<b>8 WAY</b>	238 x	244 x	116mm
<b>12 WAY</b>	310 x	244 x	116mm
<b>16 WAY</b>	382 x	244 x	116mm
<b>21 WAY</b>	472 x	244 x	116mm

## Consumer Units

METAL  
FULLY POPULATED ENCLOSURE + 100A SWITCH  
DISCONNECTOR + SURGE DEVICE + TYPE A RCD  
SURFACE



**YS5704sMET**  
4 WAY ENCLOSURE  
100A SDC  
1 X SURGE



**YS8666sMET**  
16 WAY ENCLOSURE  
100A SDC  
2 X 100A 30MA RCD  
8 X MCBS (2 X 6A,  
2 X 16A, 3 X 32A,  
1 X 40A)  
1 X SURGE



**YS8678sMET**  
21 WAY ENCLOSURE  
100A SDC  
2 X 100A 30MA RCD  
12 MCBS (3 X 6A,  
2 X 16A, 2 X 20A,  
4 X 32A, 1 X 40A)  
1 X SURGE

### DIMENSIONS:

	Width	Height	Depth
<b>4 WAY</b>	144 x	244 x	116mm
<b>8 WAY</b>	238 x	244 x	116mm
<b>12 WAY</b>	310 x	244 x	116mm
<b>16 WAY</b>	382 x	244 x	116mm
<b>21 WAY</b>	472 x	244 x	116mm



## Switch Disconnectors Double Pole

TWO MODULE



PART NO.	DESCRIPTION
<b>H5500s</b>	100A 230V
<b>H5560s</b>	63A 230V

DIMENSIONS:	83 x 36 x 67mm
CABLE CAPACITY:	50mm <sup>2</sup>

## Surge Device

DOUBLE MODULE



PART NO.	DESCRIPTION
<b>H6820s</b>	Type 2 surge device
<b>H6820s-1</b>	Neutral replacement cartridge
<b>H6820s-2</b>	Line replacement cartridge

DIMENSIONS:	83 x 36 x 67mm
CABLE CAPACITY:	25mm <sup>2</sup>

SINGLE MODULE



PART NO.	DESCRIPTION
<b>H6821s</b>	Type 2 surge device
<b>H6821s-1</b>	Replacement cartridge

DIMENSIONS:	83 x 18 x 67mm
CABLE CAPACITY:	25mm <sup>2</sup>

## MCBs Single Pole

TYPE B CURVE  
ONE MODULE



PART NO.	DESCRIPTION
<b>H5903s</b>	3A 230V
<b>H5906s</b>	6A 230V
<b>H5910s</b>	10A 230V
<b>H5916s</b>	16A 230V
<b>H5920s</b>	20A 230V
<b>H5925s</b>	25A 230V
<b>H5932s</b>	32A 230V
<b>H5940s</b>	40A 230V
<b>H5945s</b>	45A 230V
<b>H5950s</b>	50A 230V
<b>H5963s</b>	63A 230V

TYPE C CURVE  
ONE MODULE



PART NO.	DESCRIPTION
<b>H8703s</b>	3A 230V
<b>H8706s</b>	6A 230V
<b>H8710s</b>	10 230V
<b>H8716s</b>	16A 230V
<b>H8720s</b>	20A 230V
<b>H8725s</b>	25A 230V
<b>H8732s</b>	32A 230V
<b>H8740s</b>	40A 230V
<b>H8750s</b>	50A 230V
<b>H8763s</b>	63A 230V

Suitable for installation in MK Sentry Consumer Units.  
Positive contact status indication.

DIMENSIONS:	83 x 18 x 67mm
CABLE CAPACITY:	25mm <sup>2</sup>
SHORT CIRCUIT BREAKING CAPACITY:	6kA

## AFDDs Double Pole 6kA Type A

B CURVE  
ONE MODULE



PART NO.	DESCRIPTION
<b>H4406s</b>	6A, 230V, 30mA Tripping Current
<b>H4410s</b>	10A 230V, 30mA Tripping Current
<b>H4416s</b>	16A 230V, 30mA Tripping Current
<b>H4420s</b>	20A 230V, 30mA Tripping Current
<b>H4432s</b>	32A 230V, 30mA Tripping Current
<b>H4440s</b>	40A 230V, 30mA Tripping Current

C CURVE  
ONE MODULE



PART NO.	DESCRIPTION
<b>H4506s</b>	6A 230V, 30mA Tripping Current
<b>H4510s</b>	10A 230V, 30mA Tripping Current
<b>H4516s</b>	16A 230V, 30mA Tripping Current
<b>H4520s</b>	20A 230V, 30mA Tripping Current
<b>H4532s</b>	32A 230V, 30mA Tripping Current
<b>H4540s</b>	40A 230V, 30mA Tripping Current

Suitable for installation in MK Sentry Consumer Units.  
Positive contact status indication.

DIMENSIONS:	116 x 18 x 67mm
CABLE CAPACITY:	Live in 25mm <sup>2</sup> Live Out 10mm <sup>2</sup> Neutral Out 10mm <sup>2</sup>
SHORT CIRCUIT BREAKING CAPACITY:	6kA

## Miniature RCBO Double Pole 6kA

B CURVE  
ONE MODULE



PART NO.	DESCRIPTION
<b>H7732M</b>	6A 230V, 30mA Tripping Current
<b>H7733M</b>	10A 230V, 30mA Tripping Current
<b>H7734M</b>	16A 230V, 30mA Tripping Current
<b>H7735M</b>	20A 230, 30mA Tripping Current
<b>H7736M</b>	32A 230V, 30mA Tripping Current
<b>H7737M</b>	40A 230V, 30mA Tripping Current

C CURVE  
ONE MODULE



PART NO.	DESCRIPTION
<b>H6532M</b>	6A 230V, 30mA Tripping Current
<b>H6533M</b>	10A 230V, 30mA Tripping Current
<b>H6534M</b>	16A 230V, 30mA Tripping Current
<b>H6535M</b>	20A 230, 30mA Tripping Current
<b>H6536M</b>	32A 230V, 30mA Tripping Current
<b>H6537M</b>	40A 230V, 30mA Tripping Current

Suitable for installation in MK Sentry Consumer Units.  
Positive contact status indication.

DIMENSIONS:	85 x 18 x 67mm
CABLE CAPACITY:	Live In 25mm <sup>2</sup> Live Out 10mm <sup>2</sup> Neutral Out 10mm <sup>2</sup>
SHORT CIRCUIT BREAKING CAPACITY:	6kA



## RCBOs with Solid Neutral Single Pole 6kA TYPE A

B CURVE  
ONE MODULE



PART NO.	DESCRIPTION
<b>H6832s</b>	6A 230V, 30mA Tripping Current
<b>H6833s</b>	10A 230V, 30mA Tripping Current
<b>H6834s</b>	16A 230V, 30mA Tripping Current
<b>H6835s</b>	20A 230V, 30mA Tripping Current
<b>H6836s</b>	32A 230V, 30mA Tripping Current
<b>H6837s</b>	40A 230V, 30mA Tripping Current
<b>H6838s</b>	50A 230V, 30mA Tripping Current

## RCBOs with Solid Neutral Single Pole 10kA TYPE A

B CURVE  
ONE MODULE



PART NO.	DESCRIPTION
<b>H7732s</b>	6A 230V, 30mA Tripping Current
<b>H7733s</b>	10A 230V, 30mA Tripping Current
<b>H7734s</b>	16A 230V, 30mA Tripping Current
<b>H7735s</b>	20A 230V, 30mA Tripping Current
<b>H7736s</b>	32A 230V, 30mA Tripping Current
<b>H7737s</b>	40A 230V, 30mA Tripping Current
<b>H7738s</b>	50A 230V, 30mA Tripping Current

Suitable for installation in MK Sentry Consumer Units.  
Positive contact status indication.

DIMENSIONS:	114 x 18 x 67mm
CABLE CAPACITY:	Live In 25mm <sup>2</sup> Neutral In 25mm <sup>2</sup> Live Out 10mm <sup>2</sup> Neutral Out 10mm <sup>2</sup>
SHORT CIRCUIT BREAKING CAPACITY:	6kA/10kA

## RCBOs with Solid Neutral Single Pole 6kA TYPE AC

B CURVE  
ONE MODULE



PART NO.	DESCRIPTION
<b>H7932s</b>	6A 230V, 30mA Tripping Current
<b>H7933s</b>	10A 230V, 30mA Tripping Current
<b>H7934s</b>	16A 230V, 30mA Tripping Current
<b>H7935s</b>	20A 230V, 30mA Tripping Current
<b>H6310s</b>	32A 230V, 10mA Tripping Current
<b>H7936s</b>	32A 230V, 30mA Tripping Current
<b>H7937s</b>	40A 230V, 30mA Tripping Current
<b>H7938s</b>	45A 230V, 30mA Tripping Current
<b>H7939s</b>	50A 230V, 30mA Tripping Current

## RCBOs with Solid Neutral Single Pole 6kA TYPE AC

C CURVE  
ONE MODULE



PART NO.	DESCRIPTION
<b>H8932s</b>	6A 230V, 30mA Tripping Current
<b>H8933s</b>	10A 230V, 30mA Tripping Current
<b>H8934s</b>	16A 230V, 30mA Tripping Current
<b>H8935s</b>	20A 230V, 30mA Tripping Current
<b>H8936s</b>	32A 230V, 30mA Tripping Current
<b>H8937s</b>	40A 230V, 30mA Tripping Current
<b>H8938s</b>	50A 230V, 30mA Tripping Current

## RCBOs with Solid Neutral Single Pole 10kA TYPE AC

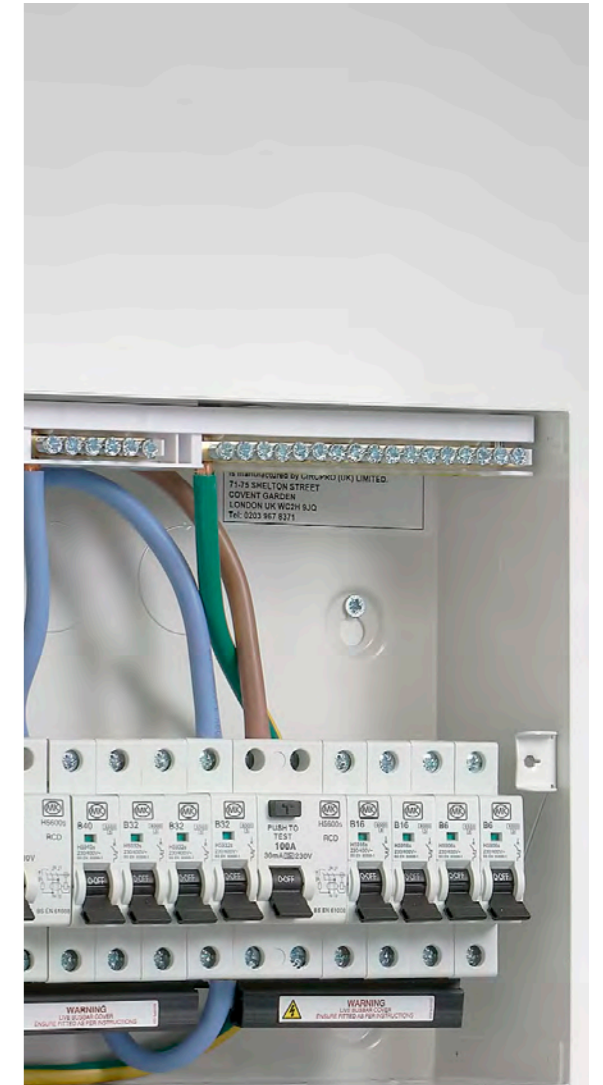
C CURVE  
ONE MODULE



PART NO.	DESCRIPTION
<b>H6532s</b>	6A 230V, 30mA Tripping Current
<b>H6533s</b>	10A 230V, 30mA Tripping Current
<b>H6534s</b>	16A 230V, 30mA Tripping Current
<b>H6535s</b>	20A 230V, 30mA Tripping Current
<b>H6536s</b>	32A 230V, 30mA Tripping Current
<b>H6537s</b>	40A 230V, 30mA Tripping Current
<b>H6538s</b>	50A 230V, 30mA Tripping Current

Suitable for installation in MK Sentry Consumer Units.  
Positive contact status indication.

DIMENSIONS:	114 x 18 x 67mm
CABLE CAPACITY:	Live In 25mm <sup>2</sup> Live Out 10mm <sup>2</sup> Neutral Out 10mm <sup>2</sup>
SHORT CIRCUIT BREAKING CAPACITY:	10kA



## RCD Double Pole 10kA Type AC

25 AMP  
TWO MODULE



PART NO.	DESCRIPTION
<b>H7825s</b>	25A 230V, 30mA Tripping Current

40 AMP  
TWO MODULE

PART NO.	DESCRIPTION
<b>H7840s</b>	40A 230V, 30mA Tripping Current

63 AMP  
TWO MODULE

PART NO.	DESCRIPTION
<b>H7860s</b>	63A 230V, 30mA Tripping Current

80 AMP  
TWO MODULE

PART NO.	DESCRIPTION
<b>H7880s</b>	80A 230V, 30mA Tripping Current

100 AMP  
TWO MODULE

PART NO.	DESCRIPTION
<b>H7800s</b>	100A 230V, 30mA Tripping Current

Suitable for installation in MK Sentry Consumer Units.  
Positive contact status indication.

DIMENSIONS:	83 x 36 x 67mm
CABLE CAPACITY:	25-63A 25mm <sup>2</sup> 80-100A 36mm <sup>2</sup>

## RCD Double Pole 10kA Type A

25 AMP  
TWO MODULE



PART NO.	DESCRIPTION
<b>H5325s</b>	25A 230V, 10mA Tripping Current
<b>H5625s</b>	25A 230V, 30mA Tripping Current
<b>H5725s</b>	25A 230V, 100mA Tripping Current
<b>H9325s</b>	25A 230V, 300mA Tripping Current

40 AMP  
TWO MODULE

PART NO.	DESCRIPTION
<b>H5640s</b>	40A 230V, 30mA Tripping Current
<b>H5740s</b>	40A 230V, 100mA Tripping Current

63 AMP  
TWO MODULE

PART NO.	DESCRIPTION
<b>H5660s</b>	63A 230V, 30mA Tripping Current
<b>H5760s</b>	63A 230V, 100mA Tripping Current

80 AMP  
TWO MODULE

PART NO.	DESCRIPTION
<b>H5680s</b>	80A 230V, 30mA Tripping Current
<b>H5780s</b>	80A 230V, 100mA Tripping Current
<b>H9380s</b>	80A 230V, 300mA Tripping Current

100 AMP  
TWO MODULE

PART NO.	DESCRIPTION
<b>H5600s</b>	100A 230V, 30mA Tripping Current
<b>H5700s</b>	100A 230V, 100mA Tripping Current
<b>H9300s</b>	100A 230V, 300mA Tripping Current

Suitable for installation in MK Sentry Consumer Units.  
Positive contact status indication.

DIMENSIONS:	83 x 36 x 67mm
CABLE CAPACITY:	25-63A 25mm <sup>2</sup> 80-100A 35mm <sup>2</sup>

## RCD Double Pole 10kA Type S and Type B

TWO MODULE



PART NO.	DESCRIPTION
<b>H6900s</b>	100A 230V, 100mA Tripping Current Time Delayed Type S
<b>H9600s</b>	100A 230V, 30mA Tripping Current Type B

Suitable for installation in MK Sentry Consumer Units.  
Positive contact status indication.

DIMENSIONS:	83 x 36 x 67mm
CABLE CAPACITY:	35mm <sup>2</sup>

## RCD Four Pole Type A

25 AMP  
FOUR MODULE



PART NO.	DESCRIPTION
<b>H6625s</b>	25A 230/400V, 30mA Tripping Current
<b>H9225s</b>	25A 230/400V, 100mA Tripping Current

40 AMP  
FOUR MODULE

PART NO.	DESCRIPTION
<b>H6640s</b>	40A 230/400V, 30mA Tripping Current
<b>H9240s</b>	40A 230/400V, 100mA Tripping Current

63 AMP  
FOUR MODULE

PART NO.	DESCRIPTION
<b>H6663s</b>	63A 230/240V, 30mA Tripping Current
<b>H9263s</b>	63A 230/400V, 100mA Tripping Current
<b>H9463s</b>	63A 230/400V, 300mA Tripping Current

Suitable for installation in MK Sentry Consumer Units.  
Positive contact status indication.

DIMENSIONS:	83 x 72 x 67mm
CABLE CAPACITY:	25mm <sup>2</sup>



## Accessories

### 16MM<sup>2</sup> CABLE KITS



PART NO.	DESCRIPTION
<b>H5563s</b>	Load Kit Consists of 3 Cables (2 Neutral And 1 Live)
<b>H5565s</b>	Multi-Incomer Kit Consists of 1 Neutral Cable
<b>H5567s</b>	Cable Kit for Switch Plus Triple Rcd Arrangement Consists of Triple Live Cable
<b>H5561s</b>	Cable Kit for Stacked Sentry Units
<b>H5569s</b>	Cable Kit for Surge and Twin Rcd
<b>H5568s</b>	Cable Kit for Switch and Twin Rcd Consists of Dual Neutral, 3 Neutral and Dual Live Cables

### 25MM<sup>2</sup> CABLE KITS



PART NO.	DESCRIPTION
<b>H6563s</b>	Split-Load Kit Consists of 3 Cables (2 Neutral and 1 Live)
<b>H6565s</b>	Multi-Incomer Kit Consists of 1 Neutral Cable
<b>H6567s</b>	Cable Kit for Switch Plus Triple Rcd Arrangement Consists of Triple Live Cable
<b>H6561s</b>	Cable Kit for Stacked Sentry Units
<b>H6569s</b>	Cable Kit for Surge and Twin Rcd
<b>H6568s</b>	Cable Kit For Switch and Twin Rcd Consists of Dual Neutral, 3 Neutral And Dual Live Cables

### LOCKING DEVICE



PART NO.	DESCRIPTION
<b>H5593s RED</b>	Metal enclosure locking device

### TERMINAL BAR



PART NO.	DESCRIPTION
<b>H5594s</b>	Terminal bar link

### REPLACEMENT LID



PART NO.	DESCRIPTION
<b>H9004sMET</b>	4 Way replacement lid
<b>H9008sMET</b>	8 Way replacement lid
<b>H9012sMET</b>	12 Way replacement lid
<b>H9016sMET</b>	16 Way replacement lid
<b>H9021sMET</b>	21 Way replacement lid

## Accessories

### MCB BLANK



PART NO.	DESCRIPTION
<b>H5544s</b>	Grey designed to fill unused modules in MK Sentry consumer units and small enclosures

### BUSBARS



PART NO.	DESCRIPTION
<b>H5511s</b>	Busbar 11 module
<b>H5590s</b>	Busbar 20 module

### BUSBAR COVER



PART NO.	DESCRIPTION
<b>HAX26s</b>	Busbar cover suitable for insulating the busbars H5511s and H5590s 10 module

### CONSUMER UNIT LABELS



PART NO.	DESCRIPTION
<b>H5599s</b>	Consumer Unit Labels Additional Printed and Blank Labels, for Identifying Devices and Circuits On Single RCD Boards

### STACKING KITS



PART NO.	DESCRIPTION
<b>H6061sMET</b>	12 Way metal consumer unit stacking kit
<b>H6062sMET</b>	16 Way metal consumer unit stacking kit
<b>H6063sMET</b>	21 Way metal consumer unit stacking kit



## 2022 Products

### TYPE AC RCD



PART NO.	DESCRIPTION
<b>H5880s</b>	80A 230V, 300mA Tripping Current
<b>H6125s</b>	25A 230V, 100mA Tripping Current
<b>H6140s</b>	40A 230V, 100mA Tripping Current
<b>H6180s</b>	80A 230V, 100mA Tripping Current
<b>H6100s</b>	100A 230V, 100mA Tripping Current
<b>H6325s</b>	25A 230V, 10mA Tripping Current
<b>H6463s</b>	63A 230/240V, 30mA Tripping Current
<b>H6525s</b>	25A 230/400V, 100mA Tripping Current
<b>H6540s</b>	40A 230/400V, 100mA Tripping Current
<b>H7840s</b>	40A 230V, 30mA Tripping Current

### TYPE AC RCBO



PART NO.	DESCRIPTION
<b>H6310s</b>	6A 230V, 30mA Tripping Current
<b>H6732s</b>	6A 230V, 30mA Tripping Current
<b>H6733s</b>	10A 230V, 30mA Tripping Current
<b>H6734s</b>	16A 230V, 30mA Tripping Current
<b>H6735s</b>	20A 230V, 30mA Tripping Current
<b>H6736s</b>	32A 230V, 30mA Tripping Current
<b>H6737s</b>	40A 230V, 30mA Tripping Current
<b>H6738s</b>	50A 230V, 30mA Tripping Current

## 2022 Products

### CONSUMER UNITS Y5 / Y6 / Y7



PART NO.	DESCRIPTION
<b>Y5662sMET</b>	12 WAY MCU, WITH 100A SWITCH and 80A RCD
<b>Y5666sMET</b>	16 WAY MCU, WITH 100A SWITCH and 2 X 63A RCD
<b>Y5681sMET</b>	21 WAY MCU, WITH 100A SWITCH and 63A and 80A RCD
<b>Y5684sMET</b>	21 WAY MCU, WITH 100A SWITCH and 80A RCD
<b>Y5686sMET</b>	16 WAY MCU, WITH 100A SWITCH and 63A and 80A RCD
<b>Y5687sMET</b>	21 WAY MCU, WITH 100A SWITCH and 2 X 80A RCD
<b>Y5688sMET</b>	16 WAY MCU, WITH 100A SWITCH and 2 X 80A RCD
<b>Y6550sMET</b>	4 WAY MCU, WITH 63A RCD and 2 X MCB
<b>Y6551sMET</b>	4 WAY MCU, WITH 63A RCD and 12 X MCB
<b>Y6552sMET</b>	8 WAY MCU, WITH 63A RCD and 6 X MCB
<b>Y7663sMET</b>	12 WAY MCU, WITH 100A SWITCH and 6 X MCB and 2 X RCBO
<b>Y7664sMET</b>	12 WAY MCU, WITH 100A SWITCH and 2 X 63A RCD and 6 X MCB
<b>Y7664sMET-A</b>	12 WAY MCU, WITH 100A SWITCH and 2 X 63A TYPE A RCD and 6 X MCB
<b>Y7665sMET</b>	16 WAY MCU, WITH 100A SWITCH and 2 X 63A RCD and 8 X MCB
<b>Y7665sMET-A</b>	16 WAY MCU, WITH 100A SWITCH and 2 X 63A TYPE A RCD and 8 X MCB
<b>Y7666sMET</b>	16 WAY MCU, WITH 100A SWITCH and 2 X 63A RCD and 10 X MCB
<b>Y7666sMET-A</b>	16 WAY MCU, WITH 100A SWITCH and 2 X 63A TYPE A RCD and 10 X MCB
<b>Y7673sMET</b>	12 WAY MCU, WITH 100A SWITCH and 6 X RCBO
<b>Y7678sMET</b>	21 WAY MCU, WITH 100A SWITCH and 2 X 63A and 80A RCD and 12 X MCB



# NEW PRODUCTS 2023

## Miniature RCBO Double Pole 6kA

B CURVE  
ONE MODULE



PART NO.	DESCRIPTION
<b>H7732M</b>	6A 230V, 30mA Tripping Current
<b>H7733M</b>	10A 230V, 30mA Tripping Current
<b>H7734M</b>	16A 230V, 30mA Tripping Current
<b>H7735M</b>	20A 230, 30mA Tripping Current
<b>H7736M</b>	32A 230V, 30mA Tripping Current
<b>H7737M</b>	40A 230V, 30mA Tripping Current

C CURVE  
ONE MODULE



PART NO.	DESCRIPTION
<b>H6532M</b>	6A 230V, 30mA Tripping Current
<b>H6533M</b>	10A 230V, 30mA Tripping Current
<b>H6534M</b>	16A 230V, 30mA Tripping Current
<b>H6535M</b>	20A 230, 30mA Tripping Current
<b>H6536M</b>	32A 230V, 30mA Tripping Current
<b>H6537M</b>	40A 230V, 30mA Tripping Current

Suitable for installation in MK Sentry Consumer Units.  
Positive contact status indication.

DIMENSIONS:	85 x 18 x 67mm
CABLE CAPACITY:	Live In 25mm <sup>2</sup> Live Out 10mm <sup>2</sup> Neutral Out 10mm <sup>2</sup>
SHORT CIRCUIT BREAKING CAPACITY:	6kA

## RCD Double Pole 10kA Type B

TWO MODULE



PART NO.	DESCRIPTION
<b>H9600s</b>	100A 230V, 30mA Tripping Current Type B

Suitable for installation in MK Sentry Consumer Units.  
Positive contact status indication.

DIMENSIONS:	83 x 36 x 67mm
CABLE CAPACITY:	35mm <sup>2</sup>

## Notes





## Greenbrook Electrical

West Road, Harlow,  
Essex, CM20 2BG  
United Kingdom  
Phone: 01279 772700  
Email: [info@greenbrook.co.uk](mailto:info@greenbrook.co.uk)  
[www.mksentrycircuitprotection.co.uk](http://www.mksentrycircuitprotection.co.uk)

Made in China.

The MK Trademark is used under license from Novar ED&S Limited  
Novar ED&S Limited makes no representations or warranties  
with respect to these products.  
These products are manufactured by Yihua.

