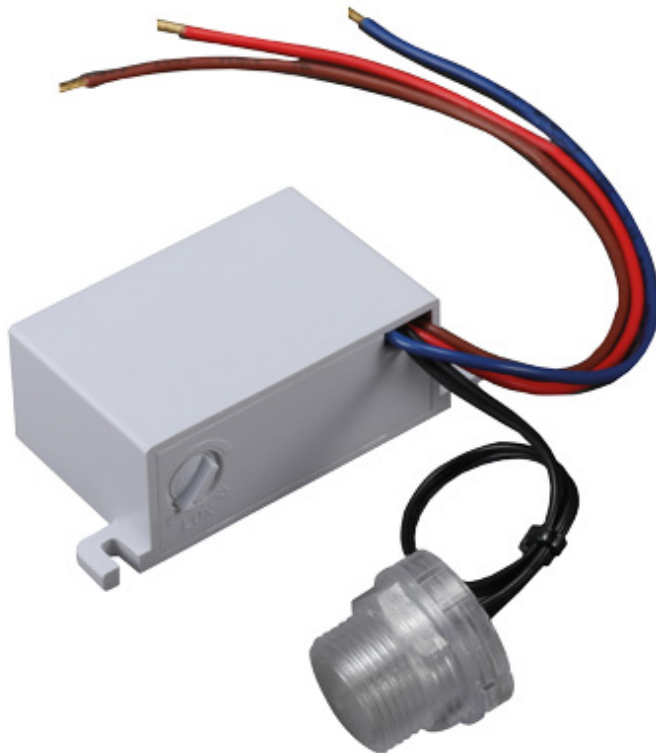


FEATURES

- ▶ Panel mounting
- ▶ Max switching 10A
- ▶ 20mm mounting thread size with lock-ring
- ▶ Switching delay 10 seconds



Note:

LED compatible can run loads of up to 500 watts, the total number of light fittings should be limited to no more than **10** fittings.

TECHNICAL INFO

Product	PECR
Description	Photocell Remote Sensing Head
Barcode	5012739 634482
Rated Voltage	220V - 240V
IP Rating	IP65
Light Level	On @ 5 Lux / Off @ 50 Lux
Max Switching Capacity	10A
Sensor Type	Photosensitive Diode
Load Rating	Tungsten 1200W Inductive 2000VA LED 500W max (max 10 fittings)
Operating Temp	- 40° - + 70°C
Class Type	II
Switching Delay	10 seconds
Electrical Life	100,000 cycles
Product Weight	47.3g
Dimensions	56.8 x 37.3 x 24mm
Guarantee	1 Year
Conforms to	EN IEC61058-1, EN61058-1-2, & BS EN IEC61547