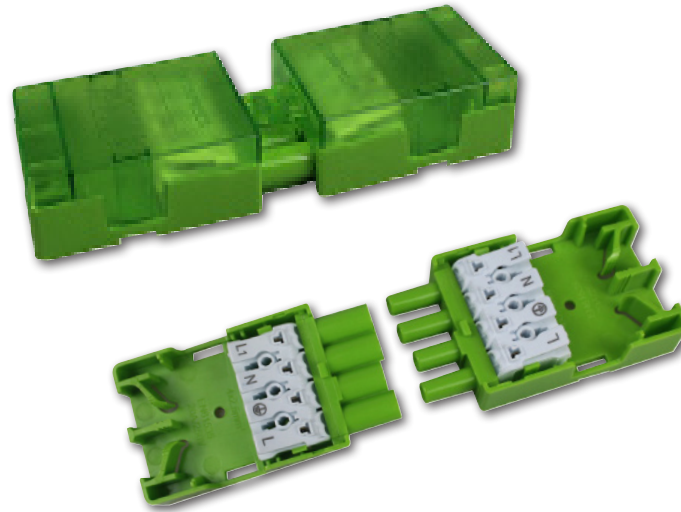


# 20Amp Lighting Connectors

## - with Quick Click Push-Fit Terminals

### FEATURES

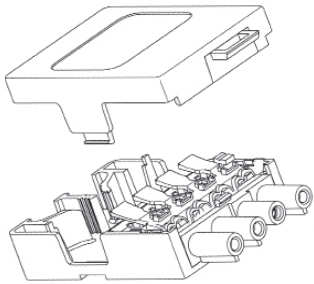
- ▶ Allows connection of permanent Live & switched Live for emergency lighting
- ▶ IP20
- ▶ 250V / 20Amp Plug-in Connector
- ▶ Easy lock and release system
- ▶ Push-fit cord grips at both ends
- ▶ Large terminal for easy access
- ▶ Designed and manufactured by GreenBrook



**QUICK  
Connekt+4**

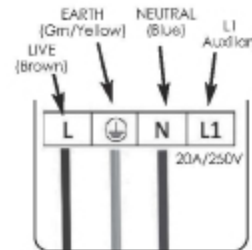
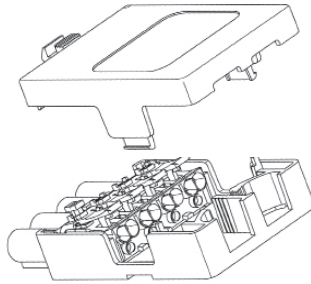
#### Female Socket

2 x 2.5mm<sup>2</sup> Solid 4 Core cable Max or 2 x 2.5mm<sup>2</sup> 3 Core Flex.



#### Male Plug

2 x 2.5mm<sup>2</sup> Solid 4 Core cable Max or 2 x 2.5mm<sup>2</sup> 3 Core Flex.



### TECHNICAL INFO

Product	LCGN4PLS
Max Voltage	250V / 20Amp
Barcode	5012739654992
Male Connector	2 x 2.5mm <sup>2</sup> Solid 4 Core cable Max or 2 x 2.5mm <sup>2</sup> 3 Core Flex
Female Connector	2 x 2.5mm <sup>2</sup> Solid 4 Core cable Max or 2 x 2.5mm <sup>2</sup> 3 Core Flex
Housing Material	Nylon 66 (PA66)
Product Finish	Polypropylene enclosure, Nylon connector
IP Rating	IP20
Terminal Material	Solid Ni Plated Brass
Box Qty	50
Dimensions	L153 x W48 x H23mm
Product Weight	84g
Guarantee	1 year
Conforms To	EN 61535

Also available Quick Connect 3+ - Part code LCGN3PLS  
Visit [www.greenbrook.co.uk](http://www.greenbrook.co.uk)

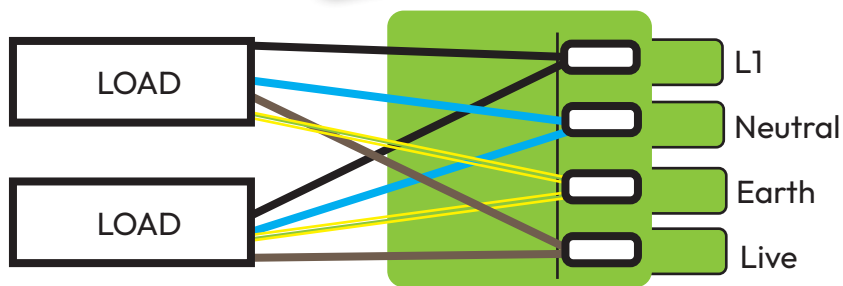
TECHNICAL WIRING INFORMATION

### QUICK ConneKt +4

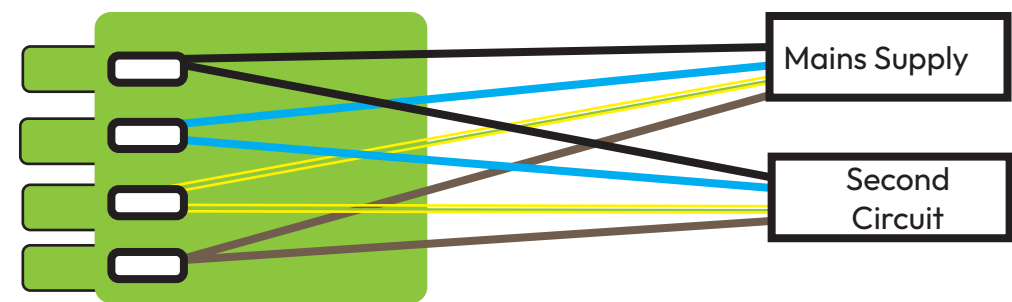


- 20A Lighting Connector - for 4 core Flex  
Wiring Diagram

### LCGN4PLS - Wiring (Quick push-fit Terminals)



Load (Male) - Pins



Supply (Female) - Socket

2 x cable entries  
Each Terminal can be fitted with upto  
2 x 2.5mm<sup>2</sup> Solid 4 Core Max  
or  
2 x 2.5mm<sup>2</sup> 3 Core Flex

**Note: Moulding states '4 x 2.5mm<sup>2</sup>' - this means 4 core 2.5mm<sup>2</sup> cable can be used.**

2 x cable entries  
Each Terminal can be fitted with upto  
2 x 2.5mm<sup>2</sup> Solid 4 Core Max  
or  
2 x 2.5mm<sup>2</sup> 3 Core Flex

