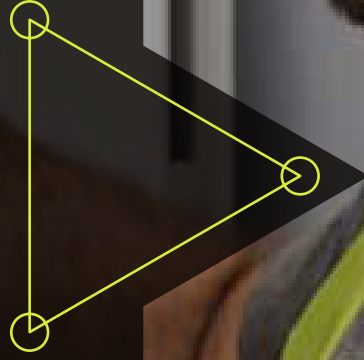
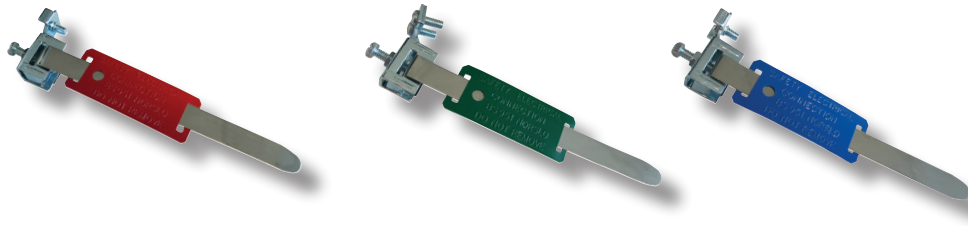




EARTHING & INSULATION



Earth Clamps & Clips



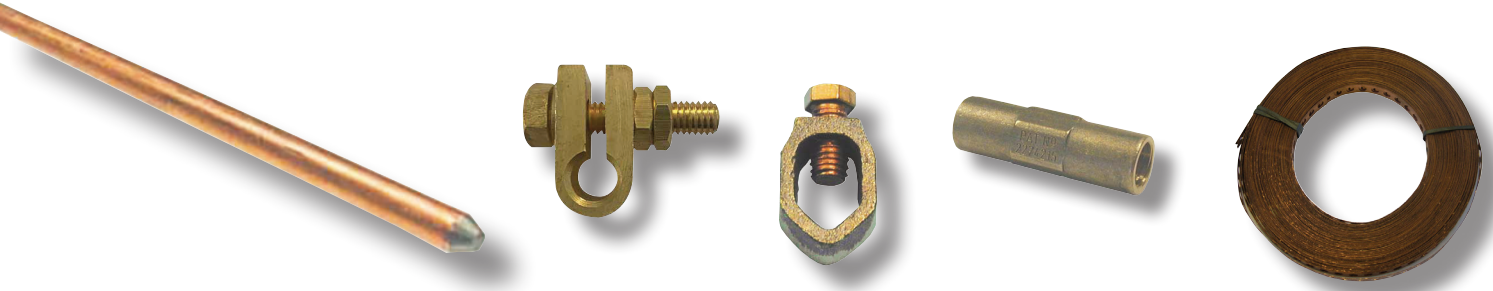
Part No	Description	Pipe Dia (ø)	Pk Qty
EC14GB EC14/2GB EC14/3GB	Earth Clamps for dry conditions Terminal size A-D 2.5 - 10mm ² Max earth conductor 1 x 10mm ²	12mm - 32mm 32mm - 50mm 50mm - 75mm	20
EC15GB EC15/2GB EC15/3GB	Earth Clamps for dry conditions Terminal size A-D 2.5 - 10mm ² Max earth conductor 1 x 10mm ²		20
EC16GB EC16/2GB EC16/3GB	Earth Clamps for dry conditions Terminal size A-D 2.5 - 10mm ² Max earth conductor 1 x 10mm ²		20

The Norslo high performance earth clamp is designed to meet the requirements of BS 951.

Available in three colours :- red for non-corrosive dry atmosphere and blue or green for corrosive or humid conditions. Available in three standard band lengths.

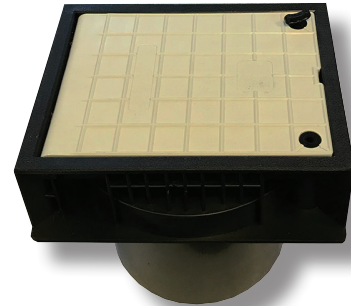
The Norslo Radiator Clamp Kit was specifically designed to allow a convenient and easy method of complying with the IET wiring regulations.

Earth Rods, Clamps & Accessories



Part No	Description	Product Information	Pk Qty
Economy Range			
NR384E	Economy Earth Rod	3/8" x 4' non extend	1
NR584E	Copper plated to 25 microns	5/8" x 4' extendable	
NRC38E	Lug to Rod Clamp - Brass	3/8" economy	
NC38E	Cable to Rod Clamp - Brass	3/8"	
NC58E	Cable to Rod Clamp - Brass	5/8"	
RC58E	Used to join two 5/8" extendable earth rods together - Brass	5/8" rod coupling (economy)	
Premium Range			
NR384	Premium Earth Rod	3/8" x 4' non extend	1
NR584	Copper bonded to 250 microns	5/8" 4' extendable	
NRC38	Lug to clamp - Alloy	3/8"	
NC38	Cable to Rod Clamp - Alloy	3/8"	
NC58	Cable to Rod Clamp - Alloy	5/8"	
RC58	Used to join 5/8" extendable earth rods together - Alloy	5/8" rod coupling	
DS58	Driving Bolt - Steel (Suitable for the 584 Earth Rods)	5/8" driving bolt	

Earth Rod Inspection Pits



Part No	Description	Terminal Hole Size	Pk Qty
ECB	Earthing Box PVC	ø 66mm, H60mm	1
PT205	Earth Inspection Pit Working Load 5,000kg Made from lightweight polymer	H300 x W300 x D212mm	1
EPIT	Lightweight Earth Inspection Pit Working Load 5.000kg Made from High performance polymer	H214 x W216mm	1