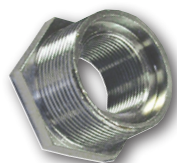


# Malleable Conduit Accessories

## - Reducers

# NORSLO

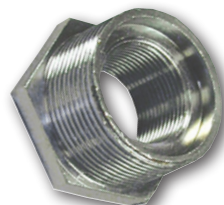
+ Conforms to BS EN 61386-21



**2016GR**



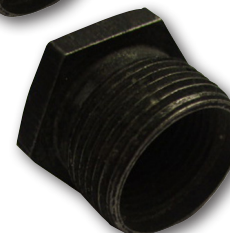
**2520GR**



**3220GR**



**2016BR**



**2520BR**

	<b>2016BR</b>	<b>2520BR</b>
<b>Thread Ø</b>	Ø20 - 16mm	Ø25 - 20mm
<b>Pack Qty</b>	100	50
<b>Barcode</b>	5012739 612640	5012739 610189
<b>Weight</b>	14g	26g
<b>Material</b>	Black Enamel	
<b>Guarantee</b>	1 Year	
<b>Conforms To</b>	BS EN 61386-21	

	<b>2016GR</b>	<b>2520GR</b>	<b>3220GR</b>	<b>3225GR</b>	<b>420GR</b>	<b>425GR</b>	<b>432GR</b>	<b>525GR</b>	<b>532GR</b>	<b>54GR</b>
<b>Thread Ø</b>	Ø20 - 16mm	Ø25 - 20mm	Ø32 - 20mm	Ø32 - 25mm	Ø1.5" - 20mm	Ø1.5" - 25mm	Ø1.5" - 32mm	Ø2" - 25mm	Ø2" - 32mm	Ø2" - 1.5"mm
<b>Pack Qty</b>	100	50	25	25	20	20	20	10	10	10
<b>Barcode</b>	5012739 612657	5012739 613180	5012739 613982	5012739 614002	5012739 614491	5012739 614507	5012739 614552	5012739 615030	5012739 615054	5012739 615061
<b>Weight</b>	14.5g	25g	82g	5.2g	130g	120g	6.5g	272g	235g	187g
<b>Material</b>	Galvanised Steel									
<b>Guarantee</b>	1 Year									
<b>Conforms To</b>	BS EN 61386-21									

TECHNICAL DATA SHEET