

EMERGENCY LUMINAIRE TEST RECORD SHEET

LUMINAIRE TYPE/REF: _____

DATE OF INSTALLATION: _____

LOCATION: _____

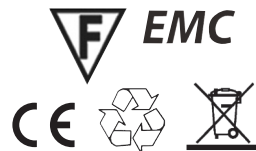
Month	Test	1st Year		2nd Year		3rd Year		4th Year		5th Year	
		Signed	Date	Signed	Date	Signed	Date	Signed	Date	Signed	Date
1	Functional										
2	Functional										
3	Functional										
4	Functional										
5	Functional										
6	Functional										
7	Functional										
8	Functional										
9	Functional										
10	Functional										
11	Functional										
12	Three Hour										
	Functional										

TECHNICAL INFORMATION

Power Rating:	230V/240V AC - 50Hz
Colour Temp:	6500K
Power Consumption:	Maintained 2W
Lamp Type:	LED Non-replaceable
Lumen Output:	Maintained 27 lm Battery 22 lm (Emergency mode)
Battery Life at 20°C:	>4 years
Class Type:	1
Operating Temp Range:	0°C - 40°C
Emergency Light Response Time (S):	1 second
Battery Type:	Ni-Cd 3.6V / 800mAh
Battery Operating Temp Range:	0°C - 45°C
Charge Time:	>24 hours
Viewing Distance:	>24 Metres
Product Weight:	533g
Conforms To:	BS EN60598-2-22

GUARANTEE
Your GreenBrook IP20 Hanging Sign Light is guaranteed for 3 years from the date of purchase. This is in addition to your statutory rights.

PLEASE KEEP THESE INSTRUCTIONS SAFE FOR FUTURE REFERENCE



WEST ROAD . HARLOW
ESSEX . CM20 2BG . UK
info@greenbrook.co.uk
www.greenbrook.co.uk

Issue no: 705243



Installation & Operating Instructions For 'Phoenix' Range LED Hanging Sign Light Model - ELLEDH1

SAFETY

This unit should be installed by a competent person and in accordance the current IET Wiring Regulations. If in doubt consult a qualified electrician. Switch off mains supply before installation, maintenance or replacing lamps.

This product must not be modified. Any modification will negate any Safety Mark Approvals and may render the product unsafe. GreenBrook accepts no responsibility for modified products. This product must be installed in accordance with these instructions.

This fitting should not be installed in close proximity to any external source of heat or covered with any heat insulating material, air flow around the fitting should not be restricted. Note any minimum distances to adjacent surfaces. This unit should be connected to the lighting supply circuit, or fused at a maximum of 3A.

GENERAL DESCRIPTION

This unit is a maintained, self-contained LED edge-lit hanging exit sign luminaire.

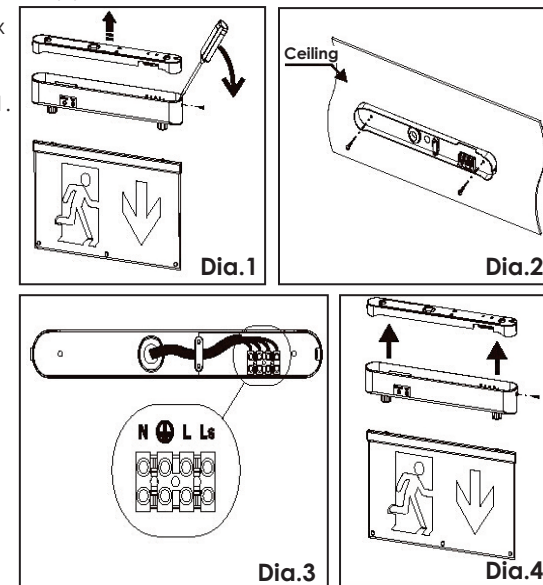
INSTALLATION INSTRUCTIONS

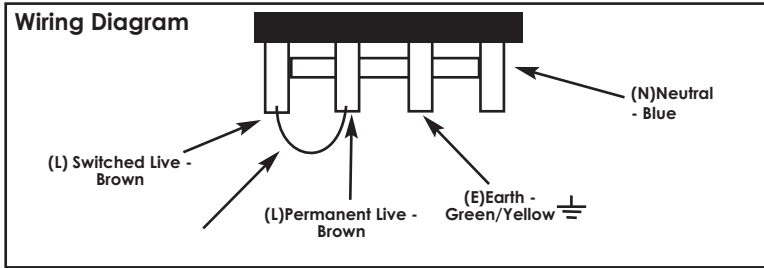
Follow these instructions carefully to ensure safe and reliable operation. Retain this leaflet for future reference. The emergency luminaire should be connected to a stable and permanent mains supply of the correct rated voltage and frequency as stated on the product specification label. This may be from the lighting supply circuit, or fused at a maximum of 3A. To facilitate testing a switched fused spur box can be included in the unswitched permanent live supply.

Class I. This product must be earthed.

All switching etc, shall comply with BS 5266 Part 1. Unless specifically permitted, emergency luminaires should not be connected or controlled by any energy management device. Before commencing installation, ensure that the electricity supply and battery pack are disconnected.

- Undo the screws at each end of the ceiling box and lift off the top cover. Use the rear of the case as a template, mark the position of the fixing holes on your mounting surface. See dia.1.
- Thread your mains supply cable through the large hole in the rear of the case. Secure the rear of the case to your mounting surface using suitable fixings (not supplied). See dia.2.
- Secure the mains supply cables into the terminal block according to the colour code overleaf following the terminal identification marked next to the terminal block in the fitting. See dia.3.
- Replace the ceiling box cover and secure using the two screws removed earlier. See dia.4.





- Terminal (L1): On this unit continuous illumination is provided by a link connected between the L1 and L terminal, this can be replaced by a switch for on/off control. Remove link for non-maintained operation, switched live connection not required for non-maintained operation.
- Terminal (L): This is the live supply to the charging circuit and must be permanent and unswitched.
- Terminal (E): This is for maintaining the electrical continuity of an earthed conductor when necessary (looping-in).
- Terminal (N): This is the neutral supply and must be permanent.

Warning: Failure to comply with these installation instructions may result in irreparable damage to the main circuit.

DO NOT HIGH-VOLTAGE TEST THIS UNIT, OR THE LIGHTING SYSTEM WITH THIS UNIT CONNECTED.

COMMISSIONING & TESTING

- Restore the power supply.
- The LED indicators should light to indicate correct charging.
- Normal Fitting:** Green Indicator working **Battery Failure:** Green indicator turned off

The use of the 'Test' Button

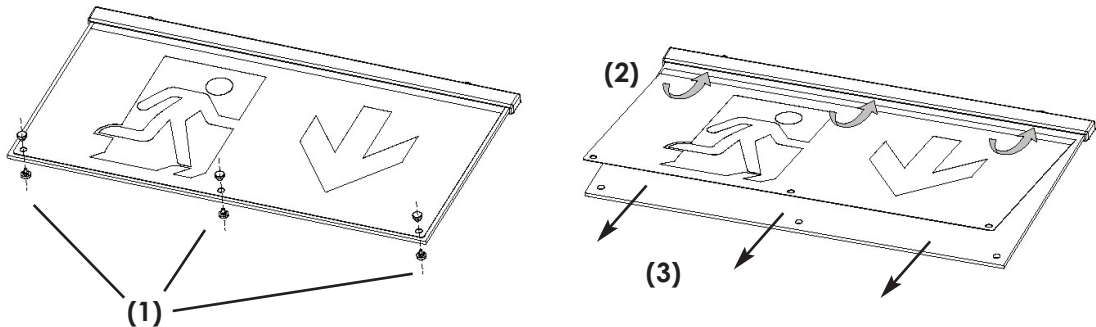
When the TEST button is pressed and held in the product will go into emergency mode. When TEST button is released product will return to normal operation.

Allow a brief time for initial partial charging and then isolate the permanent live supply by removing the fuse from the fused spur box. Check to ensure the lamp is then illuminated from the battery cell pack supply.

After a further 24 hours on a continuous charge, and only at a safe and appropriate time, mains failure should be simulated to ensure that full duration rating is achieved. Thereafter the re-charge time is 24 hours.

To change the sign:

This product can be used with interchangeable legends - (ELLEDHL Arrow Left , ELLEDHR Arrow Right and ELLEDHDN Arrow down).



- To remove the legends there is one on each side of the light panel, undo the 3 clamping screws (1) positioned along the bottom of the legend.
- Remove the legend by lifting the legend (2) and gently pull back the legend to remove it (3).
- Fitting a new legend is the reverse process. Ensure that the legend is slotted between the light panel and the white main housing body.

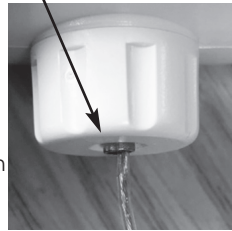
To adjust the height of the sign:

The height of this hanging light can be changed - hanging height can be adjusted by 700mm.

To adjust cable length release sign from the ceiling mount as shown in Dia.1.

The extra hanging cable is coiled in the body of the fitting, remove the ties and feed required length of cable through the clamping glands on each side by pressing in the metal collar shown in Dia.5 and gently pulling the required length of cable through the gland. Once required length is achieved, retie the surplus cable with in the body.

Metal release collar



MAINTENANCE

Servicing should only be carried out after the luminaire has been made electrically safe.

Cleaning should be carried out at regular intervals to ensure that dirt does not accumulate to an extent that will impair the electrical and / or thermal safety of the luminaire. Regular cleaning will also ensure that the optical performance is maintained.

The disposal of components from the luminaire may require consultation with local authorities. The disposal of batteries is subject to Local Authority Regulations, and the By-Laws Department for disposal of toxic waste should be consulted for specific guidance. Battery cell packs must not be incinerated.

Do not dispose with household waste, subject to conditions in the WEEE directive.

ROUTINE INSPECTION & TEST PROCEDURE

All tests should be undertaken during daylight hours at times of minimum risk and be in accordance with the recommendations of BS 5266 Part1.

DAILY - Check that the three green LED battery charging / lamp failure indicators are illuminated.

MONTHLY - In addition to the daily check, a functional test through simulation of mains supply failure should be carried out to confirm lamps are illuminated from the battery cell pack supply. This test need only be approximately 30 seconds. It should not exceed one quarter of the rated luminaire duration.

SIX - MONTHLY - In addition to the monthly test, the lamps should be illuminated from the battery cell pack supply for a continuous period of at least one hour.

ANNUALLY - In addition to the monthly tests the lamps should be illuminated from the battery cell pack supply for the full rated duration of the luminaire. (180 minutes).

At the end of each test period the mains supply should be restored and a check made to ensure that the LED battery charging/lamp failure indicators is illuminated.

Warning:

Please note once unit is installed the battery should be kept charged, failure to do so will reduce the battery life.

When unit is commissioned the battery label should be dated with the commissioning date and record sheet completed for the first test. Failure to do this may invalidate the warranty.