

Installation & Operating Instructions for 'Atlas' LED Panel - LEDPAN1

SAFETY

This unit should be fitted by a qualified electrician in accordance with the appropriate national/IET wiring regulations. Switch off mains supply before installation and maintenance. This product must not be modified. Any modification will negate any Safety Mark Approvals and may render the product unsafe. GreenBrook accepts no responsibility for modified products. The guarantee is invalid in the case of improper use, improper installation or tampering.

This product must be installed in accordance with these instructions. This fitting should not be installed in close proximity to any external source of heat or covered with any heat insulating material, air flow around the fitting should not be restricted.

GENERAL DESCRIPTION

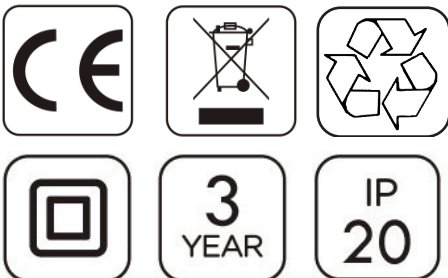
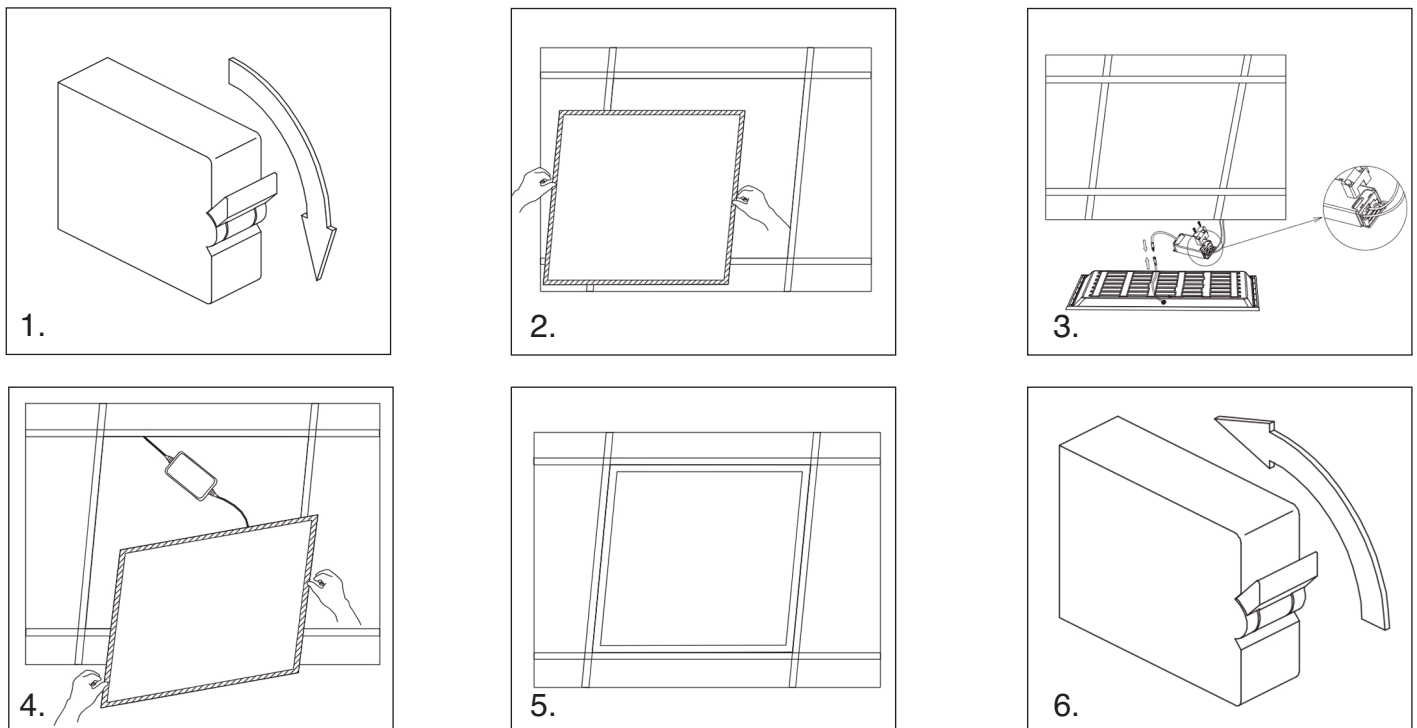
This unit is an IP20 LED Panel luminaire. Suitable for indoor use only.

INSTALLATION & DISPOSAL INSTRUCTIONS

Follow these instructions carefully to ensure safe and reliable operation. Retain this leaflet for future reference.

This product may contain substances that can be hazardous to the environment if not disposed of properly. Electrical and electronic equipment should never be disposed of with general household waste but must be separated for its correct treatment and recovery. Where possible recycle your packaging. This product contains a light source of energy efficiency class A.

To flush mount the fitting



GUARANTEE
 Your GreenBrook LED Panel is guaranteed for 3 years from the date of purchase. This is in addition to your statutory rights.

PLEASE KEEP THESE INSTRUCTIONS SAFE FOR FUTURE REFERENCE

