

-PowerBreaker-

Dual Consumer Units with Type 2 SPD

The Dual Consumer Units range are available in 3 Board layouts
 - 16 modules / 18 modules / 22 modules - all supplied with type 2 SPD.

Dual Consumer Units Contents:-

- SPD - Type 2
- SPD protection (32A MCB)
- 2P Mains Switch 100A
- 2 x Neutral bars
- Detachable Spirit level
- Plus label kit
- 3 year Guarantee

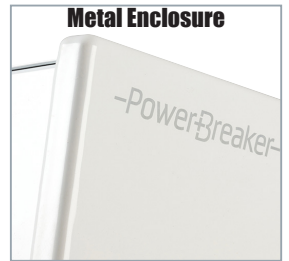


Image showing PBSPD18

18th Wiring Regulations Compliant



Metal Enclosure



Detachable Spirit Level



Consumer Unit Board Modules

MCB	RCCB (RCD)	32A MCB for SPD	Main Switch	SPD
-----	------------	-----------------	-------------	-----

PBSPD16 - 16 Modules:-

- 8 MCB's - 1 x 40A, 3 x 32A, 1 x 16A, 3 x 6A
- 2 x RCCB 80A, Type A, 30mA
- 80A RCCB wiring kit - 16mm² cable

PBSPD16 - 16 Module Board Layout

6A	16A	32A	32A			6A	6A	32A	40A			32A			
----	-----	-----	-----	--	--	----	----	-----	-----	--	--	-----	--	--	--

PBSPD18 - 18 Modules:-

- 10 MCB's - 1 x 40A, 4 x 32A, 2x 16A, 3 x 6A
- 2 x RCCB 80A, Type A, 30mA
- 80A RCCB wiring kit - 16mm² cable

PBSPD18 - 18 Module Board Layout

6A	16A	32A	32A	32A			6A	6A	16A	32A	40A			32A			
----	-----	-----	-----	-----	--	--	----	----	-----	-----	-----	--	--	-----	--	--	--

-PowerBreaker-

Dual Consumer Units with Type 2 SPD



Image showing Closed PBPD18

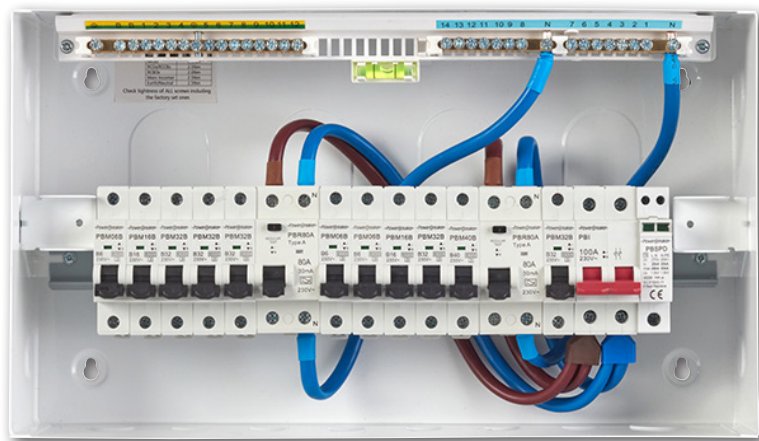
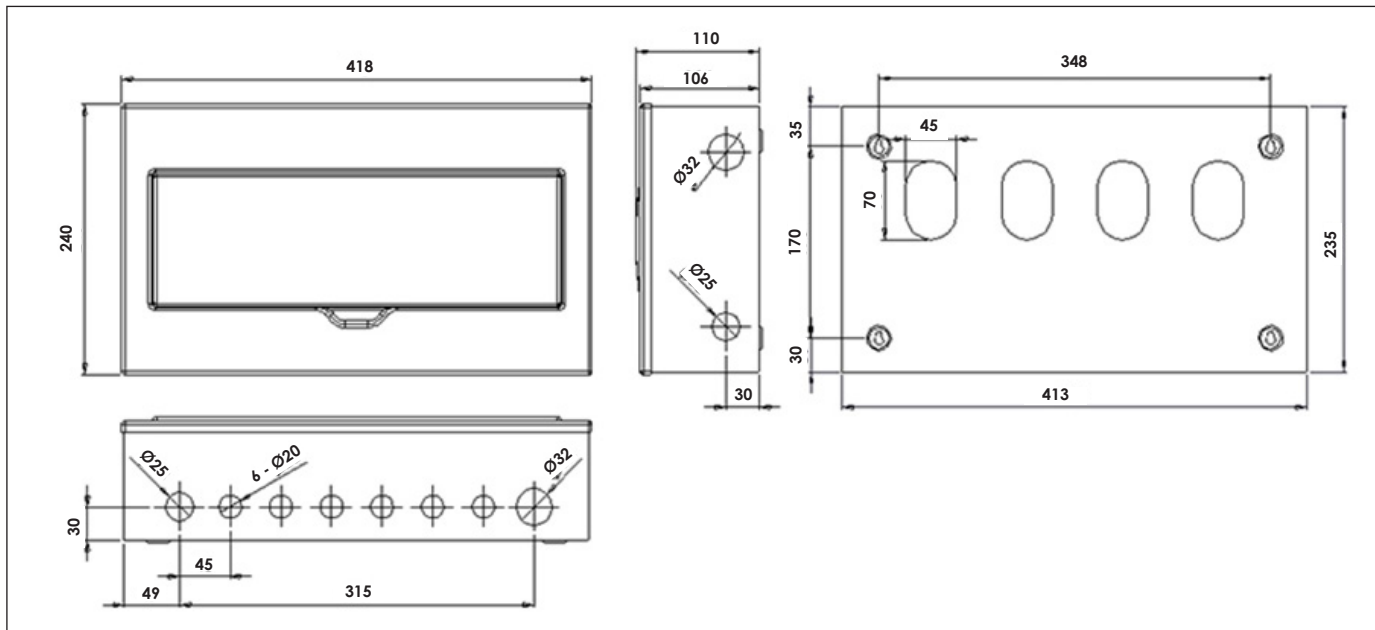


Image showing Inside PBPD18

16 - 18 Way Dimensions

For consumer Units - PBPD16 & PBPD18



-PowerBreaker-

Dual Consumer Units with Type 2 SPD

Consumer Unit Board Modules					
Blanking Module	MCB	RCCB (RCD)	32A MCB for SPD	Main Switch	SPD

PBPDP22 - 22 Modules:-

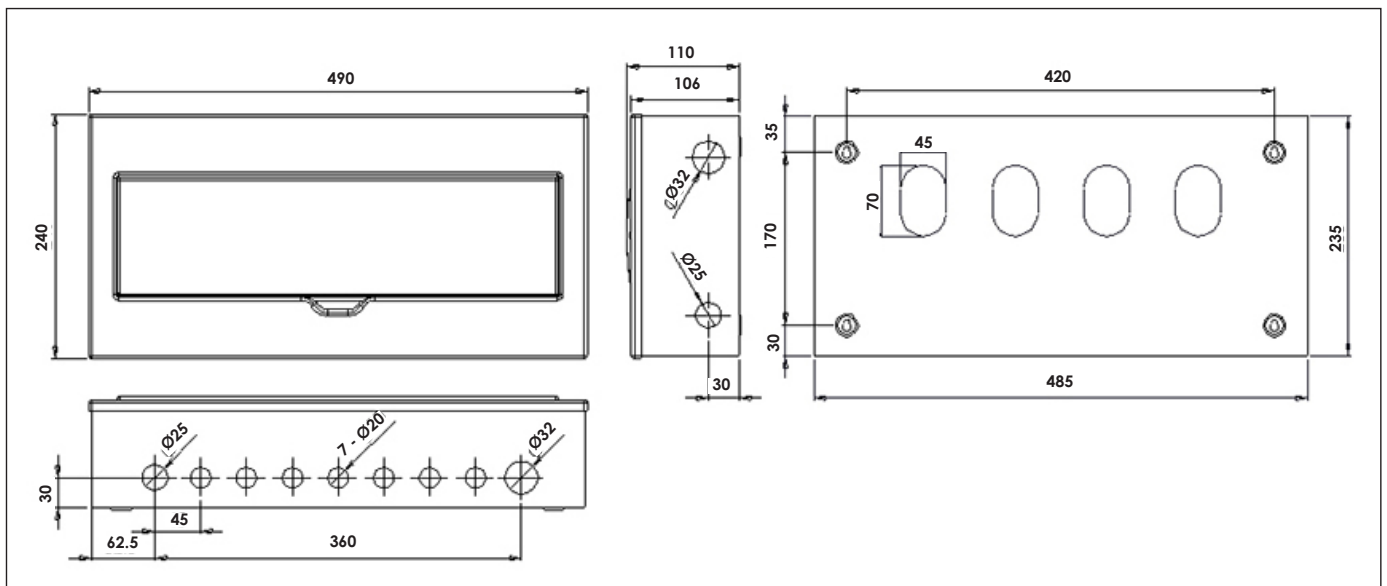
- 10 MCB's - 1 x 40A, 4 x 32A, 2 x 16A, 3 x 6A
- 2 x RCCB 100A, Type A, 30mA
- 100A RCCB wiring kit - 25mm² cable
- 4 x Module blanking plates

PBPDP22 - 22 Module Board Layout



20 - 22 Way Dimensions

For consumer Units - PBPDP22



Technical Information

	PBPDP16	PBPDP18	PBPDP22
Description	Dual Consumer Units with Type 2 SPD		
Barcode	5012739 648816	5012739 648823	5012739 648830
Weight			
Impact Rating	IK 05	IK 05	IK 05
IP Rating	IPX4	IPX4	IPX4
Colour	White Ral 9003	White Ral 9003	White Ral 9003
Enclosure	Steel	Steel	Steel
Guarantee	3 Years		
Conforms To	BS EN 61439-3		