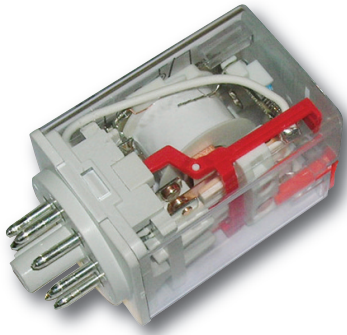


# Plug-In Relays and Bases - Round Footprint

Ideal for controlling domestic and light industrial loads including Heaters, Pumps and Motors. These Relays and Bases are industry standard parts and generally suitable replacements for Tyco, Omron and IMO components of similar style.

- ▶ **2 and 3 pole - Round Terminal Footprint**
- ▶ **With LED / flag / button as standard**
- ▶ **For 35mm DIN Rail**

TECHNICAL INFORMATION		
2 pole	10A (2A Inductive)	250V AC
3 pole	10A (2A Inductive)	250V AC
IP Rating:	IP40	
Contact material is silver alloy		
Contact rating:	10A 250V AC	
AC coil consumption:	24V to 230V AC - 1.2VA	
DC coil consumption:	24V DC - 0.9W	
Complies with UL / CSA		



### 2 Pole changeover relay

Pk Qty 5  
H69 x W38 x D36mm

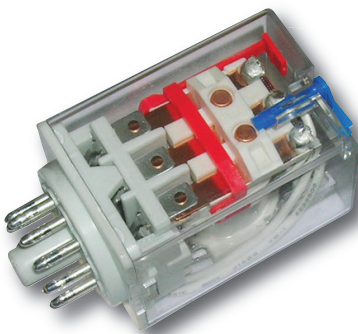
- PRR208-24AC**      8 pin, 24V AC
- PRR208-24DC**      8 pin, 24V DC
- PRR208-115AC**    8 pin, 115V AC
- PRR208-230AC**    8 pin, 230V AC



### PRRB8

#### 8 pin DIN Rail base for 2 Pole changeover relay

Pk Qty 10  
H26 x W62 x D38mm



### 3 Pole changeover relay

Pk Qty 5  
H69 x W36 x D38mm

- PRR311-24AC**      11 pin, 24V AC
- PRR311-24DC**      11 pin, 24V DC
- PRR311-115AC**    11 pin, 115V AC
- PRR311-230AC**    11 pin, 230V AC



### PRRB11

#### 11 pin DIN Rail base for 3 Pole changeover relay

Pk Qty 10  
H26 x W62 x D38mm

# Plug-In Relays and Bases - Square Footprint

Ideal for controlling domestic and light industrial loads including Heaters, Pumps and Motors. These Relays and Bases are industry standard parts and generally suitable replacements for Tyco, Omron and IMO components of similar style.

- ▶ **2 and 4 pole - Square Terminal Footprint**
- ▶ **With LED / flag / button as standard**
- ▶ **For 35mm DIN Rail**

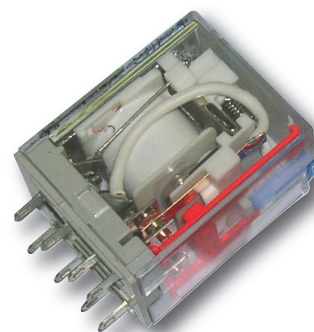
## TECHNICAL INFORMATION

2 pole	10A (2A Inductive) 250V AC
4 pole	5A (1A Inductive) 250V AC
IP Rating:	IP40
Contact material is silver alloy	
Contact rating:	2 pole is 10A 250V AC, 4 pole is 5A 250V AC
AC coil consumption: 24V to 230V AC - 1.2VA	
DC coil consumption: 24V DC - 0.9W	
Complies with UL / CSA	

### 2 Pole changeover relay

Pk Qty 5  
H43 x W27 x D21mm

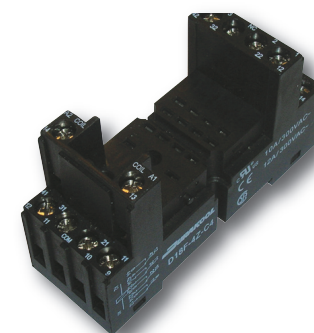
<b>PRS208-24AC</b>	8 pin, 24V AC
<b>PRS208-24DC</b>	8 pin, 24V DC
<b>PRS208-115AC</b>	8 pin, 115V AC
<b>PRS208-230AC</b>	8 pin, 230V AC



### PRSB8

#### 8 pin DIN Rail base for 2 pole changeover relay

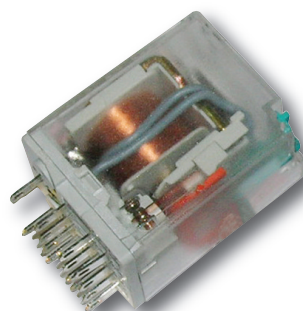
Pk Qty 10  
H43 x W75 x D27mm



### 4 Pole changeover relay

Pk Qty 5  
H43 x W27 x D21mm

<b>PRS414-24AC</b>	14 pin, 24V AC
<b>PRS414-24DC</b>	14 pin, 24V DC
<b>PRS414-115AC</b>	14 pin, 115V AC
<b>PRS414-230AC</b>	14 pin, 230V AC



### PRSB14

#### 14 pin DIN Rail base for 4 pole changeover relay

Pk Qty 10  
H43 x W75 x D27mm

